

# *Discover* **Yourself.**

**Fall 2011 Semester**

**Undergraduate Admissions Application Report**

**September 19, 2011**

**Thirdweek**

**Office of Admissions**

## Domestic and International Applicants at Main Campus Summary

Includes Freshmen Starting in Summer for Comparison with AAA Report

September 19, 2011

Fall 2011

	Fall 2011 Freshmen Summary							Fall 2010 Freshmen Summary						
	Total							9/22/2010						
	Total	Complete	Incomplete	Evaluation	Admitted	Denied	Enrolled	Total	Complete	Incomplete	Evaluation	Admitted	Denied	Enrolled
<b>Total</b>	8099	7480	619	124	7176	180	3117	7638	7009	629	55	6815	139	3088
<b>Rate</b>		92.4%	7.6%	1.7%	95.9%	2.4%	43.4%		91.8%	8.2%	0.8%	97.2%	2.0%	45.3%

	Freshmen Main Campus Totals													
	Total	Complete	Incomplete	Evaluation	Admitted	Denied	Enrolled	Total	Complete	Incomplete	Evaluation	Admitted	Denied	Enrolled
<b>Fall Domestic</b>	7648	7124	524	14	6955	155	3020	7212	6658	554	3	6533	122	2957
<b>Rate</b>		93.1%	6.9%	0.2%	97.6%	2.2%	43.4%		92.3%	7.7%	0.0%	98.1%	1.8%	45.3%
<b>Fall International</b>	210	162	48	69	72	21	34	164	138	26	41	90	7	44
<b>Rate</b>		77.1%	22.9%	42.6%	44.4%	13.0%	47.2%		84.1%	15.9%	29.7%	65.2%	5.1%	48.9%
<b>Summer Domestic</b>	186	146	40	0	142	4	63	232	191	41	1	186	4	87
<b>Rate</b>		78.5%	21.5%	0.0%	97.3%	2.7%	44.4%		82.3%	17.7%	0.5%	97.4%	2.1%	46.8%
<b>Summer International</b>	55	48	7	41	7	0	0	30	22	8	10	6	6	0
<b>Rate</b>		87.3%	12.7%	85.4%	14.6%	0.0%	0.0%		73.3%	26.7%	45.5%	27.3%	27.3%	0.0%

	Fall 2011 Transfer Summary							Fall 2010 Transfer Summary						
	Total							9/22/2010						
	Total	Complete	Incomplete	Evaluation	Admitted	Denied	Enrolled	Total	Complete	Incomplete	Evaluation	Admitted	Denied	Enrolled
<b>Total</b>	2194	1854	340	4	1786	64	1121	2107	1831	276	8	1752	71	1037
<b>Rate</b>		84.5%	15.5%	0.2%	96.3%	3.5%	62.8%		86.9%	13.1%	0.4%	95.7%	3.9%	59.2%

	Transfer Main Campus Totals													
	Total	Complete	Incomplete	Evaluation	Admitted	Denied	Enrolled	Total	Complete	Incomplete	Evaluation	Admitted	Denied	Enrolled
<b>Fall Domestic</b>	2108	1774	334	4	1709	61	1065	2013	1738	275	6	1669	63	984
<b>Rate</b>		84.2%	15.8%	0.2%	96.3%	3.4%	62.3%		86.3%	13.7%	0.3%	96.0%	3.6%	59.0%
<b>Fall International</b>	86	80	6	0	77	3	56	94	93	1	2	83	8	53
<b>Rate</b>		93.0%	7.0%	0.0%	96.3%	3.8%	72.7%		98.9%	1.1%	2.2%	89.2%	8.6%	63.9%

	Fall 2011 Readmit Summary							Fall 2010 Readmit Summary						
	Total							9/22/2010						
	Total	Complete	Incomplete	Evaluation	Admitted	Denied	Enrolled	Total	Complete	Incomplete	Evaluation	Admitted	Denied	Enrolled
<b>Total</b>	394	371	23	8	330	33	242	353	318	35	9	289	20	220
<b>Rate</b>		94.2%	5.8%	2.2%	88.9%	8.9%	73.3%		90.1%	9.9%	2.8%	90.9%	6.3%	76.1%

	Readmit Main Campus Totals													
	Total	Complete	Incomplete	Evaluation	Admitted	Denied	Enrolled	Total	Complete	Incomplete	Evaluation	Admitted	Denied	Enrolled
<b>Fall Domestic</b>	388	366	22	7	327	32	238	350	316	34	9	287	20	217
<b>Rate</b>		94.3%	5.7%	1.9%	89.3%	8.7%	72.8%		90.3%	9.7%	2.8%	90.8%	6.3%	75.6%
<b>Fall International</b>	6	5	1	1	3	1	4	3	2	1	0	2	0	3
<b>Rate</b>		83.3%	16.7%	20.0%	60.0%	20.0%	133.3%		66.7%	33.3%	0.0%	100.0%	0.0%	150.0%

\* Please refer to the AAA for official USU numbers.

\*\* The title Freshmen refers to first-time to higher education students

## Main Campus Domestic Freshmen Profile

September 19, 2011

Fall 2011

	Fall 2011								Fall 2010							
	Total	Complete	Incomplete	Evaluation	Admitted	Denied	Enrolled		Total	Complete	Incomplete	Evaluation	Admitted	Denied	Enrolled	
<b>Total</b>	7648	7124	524	14	6955	155	3020		7212	6658	554	3	6533	122	2957	
<b>Rate</b>		93.1%	6.9%	0.2%	97.6%	2.2%	43.4%			92.3%	7.7%	0.0%	98.1%	1.8%	45.3%	

	Residency															
	Total	Complete	Incomplete	Evaluation	Admitted	Denied	Enrolled	Total	Complete	Incomplete	Evaluation	Admitted	Denied	Enrolled		
<b>Resident</b>	5287	4987	300	9	4918	60	2233	5094	4782	312	0	4712	70	2296		
<b>Rate</b>		94.3%	5.7%	0.2%	98.6%	1.2%	45.4%		93.9%	6.1%	0.0%	98.5%	1.5%	48.7%		
<b>Non-Resident</b>	2343	2127	216	5	2036	86	785	2109	1871	238	3	1821	47	661		
<b>Rate</b>		90.8%	9.2%	0.2%	95.7%	4.0%	38.6%		88.7%	11.3%	0.2%	97.3%	2.5%	36.3%		
<b>Undetermined</b>	11	4	7	0	0	4	1	2	0	2	0	0	0	0		
<b>Rate</b>		36.4%	63.6%	0.0%	0.0%	100.0%	0.0%		0.0%	100.0%	0.0%	0.0%	0.0%	0.0%		
<b>Other</b>	7	6	1	0	1	5	1	7	5	2	0	0	5	0		
<b>Rate</b>		85.7%	14.3%	0.0%	16.7%	83.3%	100.0%		71.4%	28.6%	0.0%	0.0%	100.0%	0.0%		

	Ethnicity															
	Total	Complete	Incomplete	Evaluation	Admitted	Denied	Enrolled	Total	Complete	Incomplete	Evaluation	Admitted	Denied	Enrolled		
<b>American Indian/Alaskan Native</b>	26	20	6	1	18	1	8	33	23	10	0	22	1	11		
<b>Rate</b>		76.9%	23.1%	5.0%	90.0%	5.0%	44.4%		69.7%	30.3%	0.0%	95.7%	4.3%	50.0%		
<b>Asian/Pacific Islander</b>	157	144	13	0	139	5	55	96	87	9	0	82	5	30		
<b>Rate</b>		91.7%	8.3%	0.0%	96.5%	3.5%	39.6%		90.6%	9.4%	0.0%	94.3%	5.7%	36.6%		
<b>Black</b>	101	85	16	0	70	15	21	72	58	14	0	48	10	29		
<b>Rate</b>		84.2%	15.8%	0.0%	82.4%	17.6%	30.0%		80.6%	19.4%	0.0%	82.8%	17.2%	60.4%		
<b>Hispanic</b>	475	417	58	0	387	30	161	334	277	57	0	264	13	113		
<b>Rate</b>		87.8%	12.2%	0.0%	92.8%	7.2%	41.6%		82.9%	17.1%	0.0%	95.3%	4.7%	42.8%		
<b>Multiple Races</b>	174	161	13	0	152	9	68	146	131	15	0	129	2	55		
<b>Rate</b>		92.5%	7.5%	0.0%	94.4%	5.6%	44.7%		89.7%	10.3%	0.0%	98.5%	1.5%	42.6%		
<b>Native Hawaiian</b>	39	33	6	1	29	3	6	31	24	7	0	19	5	8		
<b>Rate</b>		84.6%	15.4%	3.0%	87.9%	9.1%	20.7%		77.4%	22.6%	0.0%	79.2%	20.8%	42.1%		
<b>Unknown</b>	184	160	24	0	153	7	65	312	282	30	0	277	5	124		
<b>Rate</b>		87.0%	13.0%	0.0%	95.6%	4.4%	42.5%		90.4%	9.6%	0.0%	98.2%	1.8%	44.8%		
<b>White</b>	6492	6104	388	12	6007	85	2636	6188	5776	412	3	5692	81	2587		
<b>Rate</b>		94.0%	6.0%	0.2%	98.4%	1.4%	43.9%		93.3%	6.7%	0.1%	98.5%	1.4%	45.4%		

	Fall 2011								Fall 2010							
	Total	Complete	Incomplete	Evaluation	Admitted	Denied	Enrolled		Total	Complete	Incomplete	Evaluation	Admitted	Denied	Enrolled	
<b>9/19/2011</b>	7648	7124	524	14	6955	155	3020		7212	6658	554	3	6533	122	2957	
<b>9/12/2011</b>	7662	7134	528	13	6966	155	3024		7212	6658	554	3	6533	122	2957	
<b>9/6/2011</b>	7674	7145	529	13	6977	155	3023		7212	6658	554	3	6533	122	2957	
<b>8/29/2011</b>	7696	7162	534	17	6991	154	3035		7341	6715	626	11	6582	122	2877	

**Freshmen ACT Score Distribution**  
**September 19, 2011**  
**Fall 2011**

Fall 2011 Total						
ACT Score	Incomplete	Evaluation	Admitted	Denied	Enrolled	Yield
36						0%
35	0	0	16	0	3	19%
34	0	0	37	0	13	35%
33	1	0	83	0	37	45%
32	0	0	156	0	63	40%
31	3	0	222	0	99	45%
30	8	0	260	0	93	36%
29	4	0	336	0	117	35%
28	11	0	420	0	158	38%
27	20	0	473	0	203	43%
26	14	0	550	0	222	40%
25	13	3	651	2	271	42%
24	13	0	639	1	261	41%
23	25	2	598	0	262	44%
22	11	1	604	1	284	47%
21	25	1	538	2	245	46%
20	22	1	483	4	228	47%
19	18	2	348	4	179	51%
18	27	1	300	7	158	53%
17	6	1	157	7	79	50%
16	5	0	38	42	18	47%
15	7	0	6	34	4	67%
14	2	0	3	20	1	33%
13	3	0	0	13	0	0%
12	1	0	0	4	0	0%
11	0	0	0	2	0	0%
<b>Grand Total</b>	239	12	6918	143	2998	43.3%
<b>Average</b>	22.2	21.4	24.3	15.5	23.9	42.9%

Fall 2010 9/22/2010						
ACT Score	Incomplete	Evaluation	Admitted	Denied	Enrolled	Yield
36	1	0	3	0	1	33%
35	0	0	16	0	5	31%
34	1	0	48	0	15	31%
33	1	0	80	0	33	41%
32	4	0	137	1	60	44%
31	5	0	209	0	103	49%
30	4	0	268	0	114	43%
29	7	0	300	0	132	44%
28	11	0	417	0	197	47%
27	13	0	460	0	168	37%
26	21	0	550	0	226	41%
25	19	0	522	0	216	41%
24	26	0	595	0	256	43%
23	14	0	526	0	221	42%
22	14	0	558	0	257	46%
21	26	0	473	1	236	50%
20	18	0	450	0	223	50%
19	17	0	399	3	204	51%
18	12	0	272	1	148	54%
17	10	0	152	8	84	55%
16	6	0	46	35	26	57%
15	9	1	6	30	3	50%
14	4	0	6	20	5	83%
13	4	0	1	11	1	100%
12	0	0	1	4	1	100%
11						0%
<b>Grand Total</b>	247	1	6495	114	2935	45.2%
<b>Average</b>	22.7	15.0	24.3	15.3	24.0	50.6%

### Freshmen Index Distribution

September 19, 2011

Fall 2011

Index	Fall 2011					
	Incomplete	Evaluation	Admitted	Denied	Enrolled	Yield
142	0	0	9	0	3	0%
140	0	0	18	0	6	33%
138	0	0	38	0	10	26%
136	1	0	67	0	24	36%
135	0	0	1	0	1	100%
134	0	0	141	0	70	50%
133	0	0	1	0	1	100%
132	1	0	155	0	71	46%
131	0	0	200	0	74	37%
130	0	0	22	0	9	41%
129	1	0	190	0	63	33%
128	1	0	281	0	104	37%
127	0	0	0	0	0	0%
126	6	0	363	0	155	43%
125	0	0	3	0	1	33%
124	3	0	307	0	116	38%
123	0	0	1	0	1	100%
122	3	0	386	0	141	37%
121	4	0	377	0	131	35%
120	0	0	3	0	2	67%
119	6	0	391	0	158	40%
118	0	0	1	0	1	100%
117	2	0	399	0	164	41%
116	0	0	2	0	1	50%
115	6	1	337	0	140	42%
114	0	0	15	0	5	33%
113	3	0	311	0	136	44%
112	6	0	289	0	125	43%
111	0	0	0	0	0	0%
110	2	1	337	0	161	48%
109	0	0	0	0	0	0%
108	5	1	290	0	128	44%
107	0	0	2	0	1	50%
106	3	0	273	0	133	49%
105	6	0	185	0	89	48%
104	3	0	65	0	26	40%
103	3	0	242	2	109	45%
102	0	0	0	0	0	0%
101	5	0	215	1	100	47%
100	0	0	0	0	0	0%
99	1	0	183	3	97	53%
98	0	0	3	0	1	33%
97	3	0	159	1	71	45%
96	3	0	137	3	69	50%
95	0	0	0	0	0	0%
94	2	1	112	14	58	52%
93	0	0	1	0	1	100%
92	0	0	74	10	44	59%
91	0	0	0	0	0	0%
90	2	0	86	6	50	58%
89	1	1	52	0	30	58%
88	1	0	2	5	2	100%
87	0	0	51	18	29	57%
86	0	0	0	0	0	0%
85	3	1	38	11	17	45%
84	0	0	0	0	0	0%
83	1	2	15	7	11	73%
82	1	0	1	0	1	100%
81	3	0	4	9	2	50%
80	1	0	5	17	4	80%
79	0	3	5	6	4	80%
78	0	0	0	0	0	0%
77	0	0	0	0	0	0%
76	0	0	0	4	0	0%
75	0	0	0	0	0	0%
74	0	0	0	4	0	0%
73	0	0	0	0	0	0%
72	0	0	0	6	0	0%
71	0	0	0	1	0	0%
70	1	0	0	1	0	0%
69	1	0	0	4	0	0%
68	0	0	1	0	1	100%
67	0	0	0	3	0	0%
66	0	0	0	2	0	0%
65	0	0	0	0	0	0%
64	0	0	0	0	0	0%
<b>Grand Total</b>	<b>93</b>	<b>11</b>	<b>6846</b>	<b>134</b>	<b>2952</b>	<b>43.1%</b>
<b>Average</b>	<b>106.2</b>	<b>89.0</b>	<b>112.5</b>	<b>82.8</b>	<b>111.2</b>	<b>54.4%</b>

Index	Fall 2010 9/22/2010					
	Incomplete	Evaluation	Admitted	Denied	Enrolled	Yield
142	0	0	2	0	0	0%
140	0	0	5	0	1	20%
138	0	0	16	0	2	13%
136	1	0	59	0	24	41%
135	0	0	63	0	25	40%
134	0	0	0	0	0	0%
133	1	0	113	0	58	51%
132	0	0	1	0	1	100%
131	0	0	195	0	106	54%
130	0	0	1	0	0	0%
129	2	0	157	0	53	34%
128	0	0	14	0	5	36%
127	3	0	199	0	93	47%
126	1	0	289	0	140	48%
125	0	0	0	0	0	0%
124	3	0	303	0	107	35%
123	0	0	2	0	0	0%
122	2	0	343	0	125	36%
121	0	0	2	0	0	0%
120	4	0	306	0	128	42%
119	1	0	357	0	127	36%
118	0	0	3	0	2	67%
117	7	0	368	0	162	44%
116	0	0	1	0	1	100%
115	7	0	353	1	153	43%
114	0	0	3	0	2	67%
113	2	0	334	0	142	43%
112	0	0	18	0	8	44%
111	4	0	308	0	142	46%
110	6	0	305	0	146	48%
109	0	0	2	0	2	100%
108	5	0	304	0	137	45%
107	0	0	1	0	1	100%
106	4	0	250	0	120	48%
105	0	0	2	0	1	50%
104	3	0	245	1	98	40%
103	3	0	137	0	65	47%
102	1	0	66	0	35	53%
101	3	0	206	0	111	54%
100	0	0	1	0	0	0%
99	5	0	175	1	89	51%
98	0	0	3	0	2	67%
97	2	0	170	0	81	48%
96	0	0	10	0	3	30%
95	3	0	139	3	77	55%
94	3	0	148	1	75	51%
93	0	0	2	1	1	50%
92	2	0	119	7	60	50%
91	0	0	0	0	0	0%
90	3	0	109	7	64	59%
89	0	0	1	0	0	0%
88	1	0	66	11	34	52%
87	1	0	51	0	25	49%
86	0	0	2	14	1	50%
85	0	0	40	3	23	58%
84	0	0	1	0	1	100%
83	0	0	26	16	14	54%
82	0	0	1	2	0	0%
81	1	0	22	7	11	50%
80	0	0	0	0	0	0%
79	0	1	12	3	7	58%
78	0	0	8	13	6	75%
77	0	0	1	1	1	100%
76	0	0	1	4	1	100%
75	0	0	0	0	0	0%
74	0	0	2	4	1	50%
73	0	0	0	0	0	0%
72	0	0	1	3	1	100%
71	0	0	1	1	1	100%
70	0	0	0	0	0	0%
69	0	0	1	4	0	0%
67	1	0	0	0	0	0%
65	0	0	0	3	0	0%
64	0	0	0	0	0	0%
<b>Grand Total</b>	<b>85</b>	<b>1</b>	<b>6442</b>	<b>111</b>	<b>2899</b>	<b>0.450016</b>
<b>Average</b>	<b>108.6</b>	<b>79.0</b>	<b>112.6</b>	<b>83.3</b>	<b>111.6</b>	<b>48%</b>

# Main Campus Domestic Transfer Profile

September 19, 2011

Fall 2011

	Fall 2011								Fall 2010							
	Total	Complete	Incomplete	Evaluation	Admitted	Denied	Enrolled		Total	Complete	Incomplete	Evaluation	Admitted	Denied	Enrolled	
<b>Total</b>	2108	1774	334	4	1709	61	1065		2013	1738	275	6	1669	63	984	
<b>Rate</b>		84.2%	15.8%	0.2%	96.3%	3.4%	62.3%			86.3%	13.7%	0.3%	96.0%	3.6%	59.0%	

	Residency															
	Total	Complete	Incomplete	Evaluation	Admitted	Denied	Enrolled		Total	Complete	Incomplete	Evaluation	Admitted	Denied	Enrolled	
<b>Resident</b>	1362	1181	181	2	1153	26	777		1359	1208	151	3	1175	30	762	
<b>Rate</b>		86.7%	13.3%	0.2%	97.6%	2.2%	67.4%			88.9%	11.1%	0.2%	97.3%	2.5%	64.9%	
<b>Non-Resident</b>	735	583	152	2	555	26	285		645	524	121	3	494	27	222	
<b>Rate</b>		79.3%	20.7%	0.3%	95.2%	4.5%	51.4%			81.2%	18.8%	0.6%	94.3%	5.2%	44.9%	
<b>Undetermined</b>	8	7	1	0	0	7	2		6	3	3	0	0	3	0	
<b>Rate</b>		87.5%	12.5%	0.0%	0.0%	100.0%	0.0%			50.0%	50.0%	0.0%	0.0%	100.0%	0.0%	
<b>Other</b>	3	3	0	0	1	2	1		3	3	0	0	0	3	0	
<b>Rate</b>		100.0%	0.0%	0.0%	33.3%	66.7%	100.0%			100.0%	0.0%	0.0%	0.0%	100.0%	0.0%	

	Ethnicity															
	Total	Complete	Incomplete	Evaluation	Admitted	Denied	Enrolled		Total	Complete	Incomplete	Evaluation	Admitted	Denied	Enrolled	
<b>American Indian/Alaskan Native</b>	17	16	1	0	16	0	11		10	8	2	0	8	0	2	
<b>Rate</b>		94.1%	5.9%	0.0%	100.0%	0.0%	68.8%			80.0%	20.0%	0.0%	100.0%	0.0%	25.0%	
<b>Asian/Pacific Islander</b>	26	21	5	1	14	6	5		32	29	3	1	23	5	13	
<b>Rate</b>		80.8%	19.2%	4.8%	66.7%	28.6%	35.7%			90.6%	9.4%	3.4%	79.3%	17.2%	56.5%	
<b>Black</b>	31	22	9	0	18	4	13		29	22	7	0	20	2	11	
<b>Rate</b>		71.0%	29.0%	0.0%	81.8%	18.2%	72.2%			75.9%	24.1%	0.0%	90.9%	9.1%	55.0%	
<b>Hispanic</b>	110	79	31	0	74	5	43		74	59	15	1	55	3	33	
<b>Rate</b>		71.8%	28.2%	0.0%	93.7%	6.3%	58.1%			79.7%	20.3%	1.7%	93.2%	5.1%	60.0%	
<b>Multiple Races</b>	39	30	9	0	30	0	16		32	25	7	0	25	0	9	
<b>Rate</b>		76.9%	23.1%	0.0%	100.0%	0.0%	53.3%			78.1%	21.9%	0.0%	100.0%	0.0%	36.0%	
<b>Native Hawaiian</b>	14	8	6	0	8	0	5		14	12	2	1	11	0	9	
<b>Rate</b>		57.1%	42.9%	0.0%	100.0%	0.0%	62.5%			85.7%	14.3%	8.3%	91.7%	0.0%	81.8%	
<b>Unknown</b>	138	121	17	1	117	3	81		123	94	29	0	88	6	50	
<b>Rate</b>		87.7%	12.3%	0.8%	96.7%	2.5%	69.2%			76.4%	23.6%	0.0%	93.6%	6.4%	56.8%	
<b>White</b>	1733	1477	256	2	1432	43	891		1699	1489	210	3	1439	47	857	
<b>Rate</b>		85.2%	14.8%	0.1%	97.0%	2.9%	62.2%			87.6%	12.4%	0.2%	96.6%	3.2%	59.6%	

	Fall 2011								Fall 2010							
	Total	Complete	Incomplete	Evaluation	Admitted	Denied	Enrolled		Total	Complete	Incomplete	Evaluation	Admitted	Denied	Enrolled	
<b>9/19/2011</b>	2108	1774	334	4	1709	61	1065		2013	1738	275	6	1669	63	984	
<b>9/12/2011</b>	2111	1776	335	6	1710	60	1066		2013	1738	275	6	1669	63	984	
<b>9/6/2011</b>	2117	1779	338	5	1713	61	1062		2013	1738	275	6	1669	63	984	
<b>8/29/2011</b>	2135	1789	346	8	1718	63	1065		2086	1734	352	35	1640	59	847	

## Main Campus Domestic Reapplicant Profile

September 19, 2011

Fall 2011

	Fall 2011								Fall 2010							
	Total	Complete	Incomplete	Evaluation	Admitted	Denied	Enrolled		Total	Complete	Incomplete	Evaluation	Admitted	Denied	Enrolled	
<b>Total</b>	388	366	22	7	327	32	238		350	316	34	9	287	20	217	
<b>Rate</b>		94.3%	5.7%	1.9%	89.3%	8.7%	72.8%			90.3%	9.7%	2.8%	90.8%	6.3%	75.6%	

	Residency															
	Total	Complete	Incomplete	Evaluation	Admitted	Denied	Enrolled	Total	Complete	Incomplete	Evaluation	Admitted	Denied	Enrolled		
<b>Resident</b>	358	338	20	7	307	24	224	299	271	28	15	241	15	162		
<b>Rate</b>		94.4%	5.6%	2.1%	90.8%	7.1%	73.0%		90.6%	9.4%	5.5%	88.9%	5.5%	67.2%		
<b>Non-Resident</b>	24	22	2	0	20	2	10	29	27	2	2	22	3	13		
<b>Rate</b>		91.7%	8.3%	0.0%	90.9%	9.1%	50.0%		93.1%	6.9%	7.4%	81.5%	11.1%	59.1%		
<b>Undetermined</b>	5	5	0	0	0	5	4	23	4	19	1	0	3	4		
<b>Rate</b>		100.0%	0.0%	0.0%	0.0%	100.0%	0.0%		17.4%	82.6%	25.0%	0.0%	75.0%	0.0%		
<b>Other</b>	1	1	0	0	0	1	0	1	0	1	0	0	0	0		
<b>Rate</b>		100.0%	0.0%	0.0%	0.0%	100.0%	0.0%		0.0%	100.0%	0.0%	0.0%	0.0%	0.0%		

	Ethnicity															
	Total	Complete	Incomplete	Evaluation	Admitted	Denied	Enrolled	Total	Complete	Incomplete	Evaluation	Admitted	Denied	Enrolled		
<b>American Indian/Alaskan Native</b>	4	4	0	1	3	0	2	5	5	0	1	4	0	3		
<b>Rate</b>		100.0%	0.0%	25.0%	75.0%	0.0%	66.7%		100.0%	0.0%	20.0%	80.0%	0.0%	75.0%		
<b>Asian/Pacific Islander</b>	1	1	0	0	1	0	1	3	1	2	0	1	0	0		
<b>Rate</b>		100.0%	0.0%	0.0%	100.0%	0.0%	100.0%		33.3%	66.7%	0.0%	100.0%	0.0%	0.0%		
<b>Black</b>	4	3	1	0	3	0	3	3	3	0	0	2	1	1		
<b>Rate</b>		75.0%	25.0%	0.0%	100.0%	0.0%	100.0%		100.0%	0.0%	0.0%	66.7%	33.3%	50.0%		
<b>Hispanic</b>	17	16	1	1	14	1	10	12	8	4	1	6	1	6		
<b>Rate</b>		94.1%	5.9%	6.3%	87.5%	6.3%	71.4%		66.7%	33.3%	12.5%	75.0%	12.5%	100.0%		
<b>Multiple Races</b>	3	3	0	0	3	0	2	2	2	0	0	2	0	2		
<b>Rate</b>		100.0%	0.0%	0.0%	100.0%	0.0%	66.7%		100.0%	0.0%	0.0%	100.0%	0.0%	100.0%		
<b>Native Hawaiian</b>	0	0	0	0	0	0	0	0	0	0	0	0	0	0		
<b>Rate</b>		0.0%	0.0%	0.0%	0.0%	0.0%	0.0%		0.0%	0.0%	0.0%	0.0%	0.0%	0.0%		
<b>Unknown</b>	51	47	4	1	41	5	30	61	54	7	1	49	4	36		
<b>Rate</b>		92.2%	7.8%	2.1%	87.2%	10.6%	73.2%		88.5%	11.5%	1.9%	90.7%	7.4%	73.5%		
<b>White</b>	308	292	16	4	262	26	190	264	243	21	6	223	14	169		
<b>Rate</b>		94.8%	5.2%	1.4%	89.7%	8.9%	72.5%		92.0%	8.0%	2.5%	91.8%	5.8%	75.8%		

	Fall 2011								Fall 2010							
	Total	Complete	Incomplete	Evaluation	Admitted	Denied	Enrolled		Total	Complete	Incomplete	Evaluation	Admitted	Denied	Enrolled	
<b>9/19/2011</b>	388	366	22	7	327	32	238		350	316	34	9	287	20	217	
<b>9/12/2011</b>	393	371	22	9	331	31	238		350	316	34	9	287	20	217	
<b>9/6/2011</b>	393	370	23	9	331	30	234		350	316	34	9	287	20	217	
<b>8/29/2011</b>	404	380	24	17	334	29	237		352	302	50	18	263	21	179	

## Regional Campuses & Distance Education

September 19, 2011

Fall 2011

	Fall 2011 Total							Fall 2010 9/22/2010						
	Total	Complete	Incomplete	Evaluation	Admitted	Denied	Enrolled	Total	Complete	Incomplete	Evaluation	Admitted	Denied	Enrolled
<b>Total</b>	2162	1924	238	11	1854	59	1521	2280	2097	183	13	2036	48	1567
<b>Rate</b>		89.0%	11.0%	0.6%	96.4%	3.1%	82.0%		92.0%	8.0%	0.6%	97.1%	2.3%	77.0%

	Off Campus Totals													
	Total	Complete	Incomplete	Evaluation	Admitted	Denied	Enrolled	Total	Complete	Incomplete	Evaluation	Admitted	Denied	Enrolled
<b>Freshmen Fall Domestic</b>	603	532	71	5	508	19	454	745	691	54	4	671	16	502
<b>Rate</b>		88.2%	11.8%	0.9%	95.5%	3.6%	89.4%		92.8%	7.2%	0.6%	97.1%	2.3%	74.8%
<b>Freshmen Summer Domestic</b>	107	80	27	0	78	2	20	161	139	22	0	135	4	50
<b>Rate</b>		74.8%	25.2%	0.0%	97.5%	2.5%	25.6%		86.3%	13.7%	0.0%	97.1%	2.9%	37.0%
<b>Transfer Domestic</b>	1151	1036	115	1	1005	30	819	1038	946	92	1	927	18	746
<b>Rate</b>		90.0%	10.0%	0.1%	97.0%	2.9%	81.5%		91.1%	8.9%	0.1%	98.0%	1.9%	80.5%
<b>Readmit Domestic</b>	301	0	25	5	263	8	228	336	0	15	8	303	10	269
<b>Rate</b>		0.0%	8.3%	0.0%	0.0%	0.0%	86.7%		0.0%	4.5%	0.0%	0.0%	0.0%	88.8%

	Fall 2011							Fall 2010						
	Total	Complete	Incomplete	Evaluation	Admitted	Denied	Enrolled	Total	Complete	Incomplete	Evaluation	Admitted	Denied	Enrolled
<b>9/19/2011</b>	2162	1924	238	11	1854	59	1521	2280	2097	183	13	2036	48	1567
<b>9/12/2011</b>	2182	1942	240	16	1868	58	1548	2280	2097	183	13	2036	48	1567
<b>9/6/2011</b>	2205	1958	247	21	1878	59	1542	2280	2097	183	13	2036	48	1567
<b>8/29/2011</b>	2227	1956	271	40	1859	57	1545	2028	1786	242	65	1690	31	1112

**Scholarship Distribution**  
September 19, 2011  
Fall 2011

	Fall 2011 Total	
	Total Offered	Enrolled
<b>Total</b>	3698	1844
<b>Rate</b>		49.9%

	Scholarships		
	Total Offered	Enrolled	Yield
100 Mile Radius	89	49	55.1%
4-H Scholarship	2	2	100.0%
Aggie Achievement	1	1	100.0%
Alumni Legacy Waiver	233	192	82.4%
Distinguished Service Scholars	9	1	11.1%
Involvement Scholarship	23	16	69.6%
ISU/USU	104	50	48.1%
Leadership Scholarship	41	21	51.2%
MULTIPLE	422	281	66.6%
Need-Based Scholarship	55	36	65.5%
Non Resident Aggie Achievement	53	26	49.1%
Non Resident Aggie Merit	54	18	33.3%
Non Resident Aggie Scholar	142	40	28.2%
Non Resident Ambassador	4	4	100.0%
Non Resident Dean's	69	23	33.3%
Non Resident Educational Oppor	10	9	90.0%
Non Resident Presidential	50	16	32.0%
Non Resident Waiver	59	24	40.7%
Nonres Educational Opp. Half	1	1	100.0%
Resident Achievement	637	236	37.0%
Resident Aggie Merit	405	155	38.3%
Resident Aggie Scholar	501	191	38.1%
Resident Ambassador	15	15	100.0%
Resident Dean's	207	87	42.0%
Resident Educational Opp. Half	14	12	85.7%
Resident Educational Oppor	14	10	71.4%
Resident Presidential Scholar	151	64	42.4%
Service Scholarship	66	40	60.6%
Sterling Scholar	13	1	7.7%
Transfer 100 Mile Radius	8	5	62.5%
Transfer Ambassador Non_Res	1	1	100.0%
Transfer Ambassador Resident	5	5	100.0%
Transfer ISU/USU	6	3	50.0%
Transfer Non-Res Aggie Scholar	23	13	56.5%
Transfer Non-Resident Dean	29	20	69.0%
Transfer Non-Resident Presiden	4	3	75.0%
Transfer Resident Aggie Schola	92	60	65.2%
Transfer Resident Dean	82	61	74.4%
Transfer Resident Presidential	15	12	80.0%
USU/Wyoming Scholarship	13	3	23.1%
WUE 6 Semesters	5	5	100.0%
WUE 8 Semesters	60	32	53.3%

	Fall 2011		Fall 2010	
	Total Offered	Enrolled	Total Offered	Enrolled
9/19/2011	3698	1844	3480	1784
9/12/2011	3704	1847	3480	1784
9/6/2011	3707	1850	3480	1784
8/29/2011	3711	1852	3512	1769

	Fall 2010 Total	
	Total Offered	Enrolled
<b>Total</b>	3480	1784
<b>Rate</b>		51.3%

	Scholarships		
	Total Offered	Enrolled	Yield
100 Mile Radius	74	43	58.1%
Aggie Achievement	56	32	57.1%
Alumni Legacy Dean's	1	0	0.0%
Alumni Legacy Scholar	1	0	0.0%
Alumni Legacy Waiver	170	130	76.5%
Distinguished Service Scholars	9	7	77.8%
Involvement Scholarship	11	8	72.7%
ISU/USU	96	40	41.7%
Leadership Scholarship	44	31	70.5%
MULTIPLE	317	216	68.1%
Need-Based Scholarship	52	31	59.6%
Non Resid Aggie Scholar, ID/WY	87	38	43.7%
Non Resident Aggie Merit	44	6	13.6%
Non Resident Aggie Scholar	61	16	26.2%
Non Resident Ambassador	4	4	100.0%
Non Resident Dean's	115	48	41.7%
Non Resident Educational Oppor	4	3	75.0%
Non Resident Presidential	84	37	44.0%
Non Resident Waiver	54	37	68.5%
Nonres Educational Opp. Half	3	2	66.7%
Resident Achievement	272	115	42.3%
Resident Aggie Merit	358	156	43.6%
Resident Aggie Scholar	512	206	40.2%
Resident Ambassador	16	16	100.0%
Resident Dean's	394	196	49.7%
Resident Educational Opp. Half	7	7	100.0%
Resident Educational Oppor	12	11	91.7%
Resident Presidential Scholar	297	158	53.2%
Service Scholarship	51	24	47.1%
Sterling Scholar	6	0	0.0%
Transfer 100 Mile Radius	5	3	60.0%
Transfer Ambassador Non_Res	1	1	100.0%
Transfer Ambassador Resident	4	4	100.0%
Transfer ISU/USU	4	2	50.0%
Transfer Non-Res Aggie Scholar	8	5	62.5%
Transfer Non-Res Scholar ID/WY	7	3	42.9%
Transfer Non-Resident Dean	17	15	88.2%
Transfer Non-Resident Presiden	6	4	66.7%
Transfer Resident Aggie Schola	73	42	57.5%
Transfer Resident Dean	92	57	62.0%
Transfer Resident Presidential	8	7	87.5%
WUE 6 Semesters	4	3	75.0%
WUE 8 Semesters	39	20	51.3%

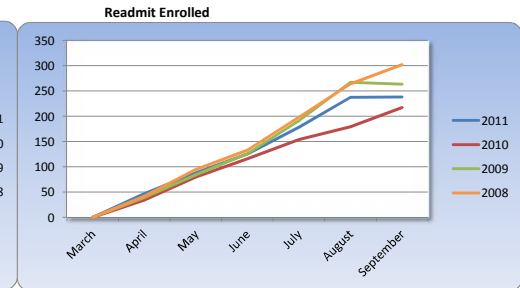
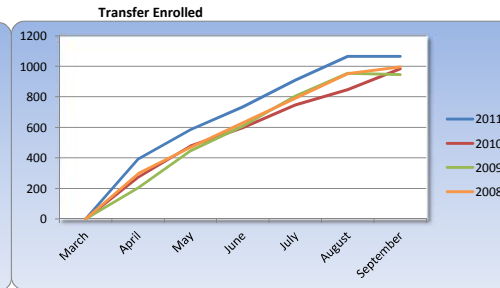
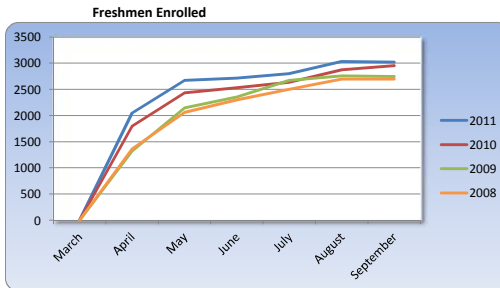
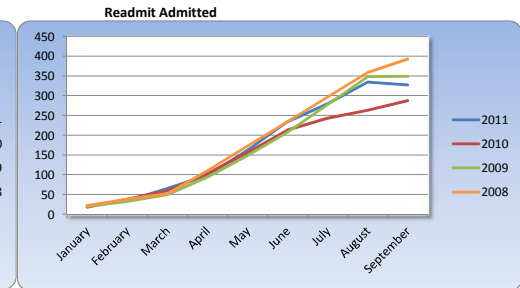
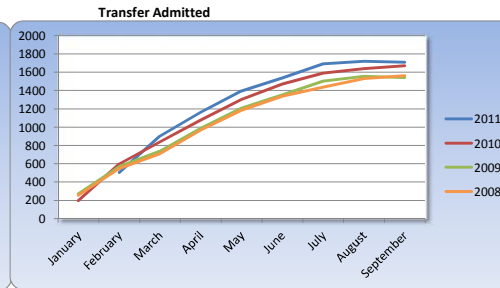
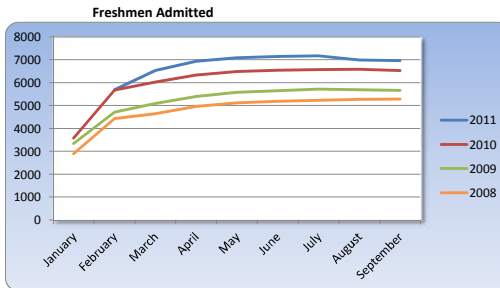
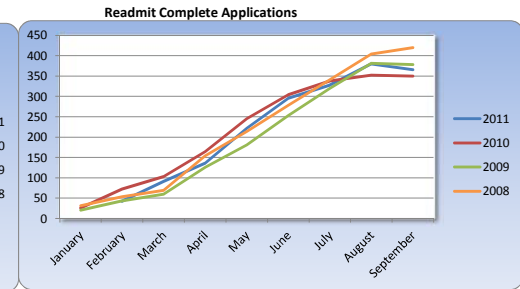
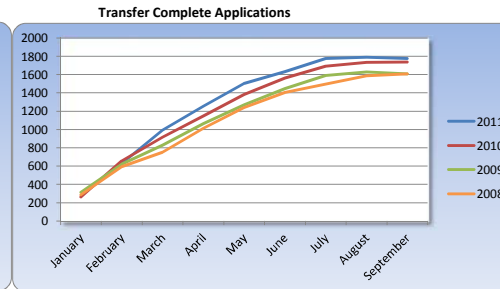
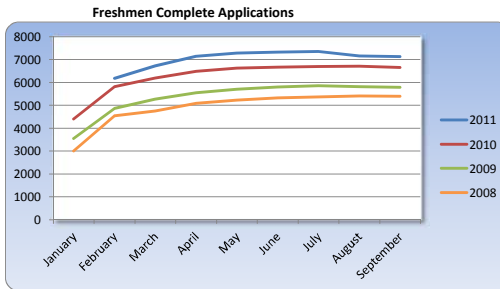
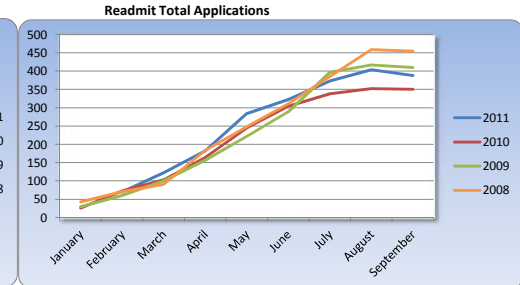
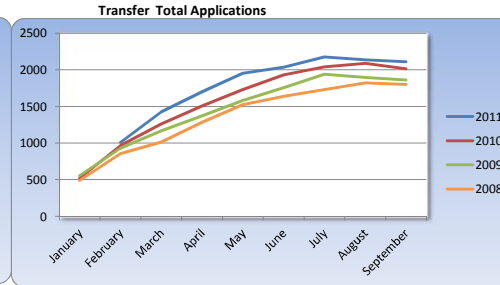
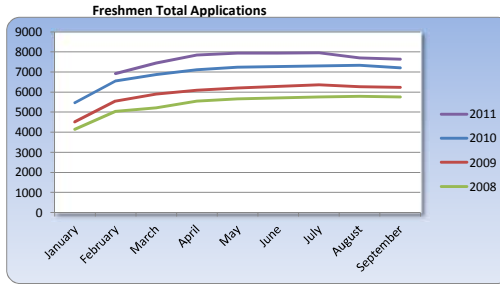
**Application Profile Summary**  
**September 19, 2011**  
**Fall 2011**

Freshmen										
	Total	Complete	Incomplete	Evaluation	Admitted	Denied	Non-Resident Complete	Non-Resident Admitted	Enrolled	Enrollment Yield
2011 (09/19/11)	7648	7124	524	14	6955	155	2127	2036	3020	43.4%
As of 09/12/11	-14	-10	-4	+1	-11	0	-3	-3	-4	0.0
2010 (Third Week)	7212	6658	554	3	6533	122	1871	1821	2957	45.3%
2009 (Third Week)	6234	5789	445	4	5667	118	1600	1542	2744	48.4%
2008 (Third Week)	5752	5389	363	2	5277	110	1485	1443	2697	51.1%
2007 (Third Week)	5887	5496	391	3	5372	121	1578	1532	2737	50.9%
2006 (Third Week)	5366	4941	425	8	4766	167	1316	1258	2567	53.9%

Transfer										
	Total	Complete	Incomplete	Evaluation	Admitted	Denied	Non-Resident Complete	Non-Resident Admitted	Enrolled	Enrollment Yield
2011 (09/19/11)	2108	1774	334	4	1709	61	583	555	1065	62.3%
As of 09/12/11	-3	-2	-1	-2	-1	+1	-2	-1	-1	0.0
2010 (Third Week)	2013	1738	275	6	1669	63	524	494	984	59.0%
2009 (Third Week)	1862	1607	255	9	1540	58	465	440	946	61.4%
2008 (Third Week)	1799	1606	193	6	1562	38	516	491	996	63.8%
2007 (Third Week)	1798	1552	246	5	1496	51	472	445	970	64.8%
2006 (Third Week)	1956	1651	305	15	1574	62	497	462	1022	64.9%

Reapplicant										
	Total	Complete	Incomplete	Evaluation	Admitted	Denied	Non-Resident Complete	Non-Resident Admitted	Enrolled	Enrollment Yield
2011 (09/19/11)	388	366	22	7	327	32	22	20	238	72.8%
As of 09/12/11	-5	-5	0	-2	-4	+1	0	0	0	+0.9
2010 (Third Week)	350	316	34	9	287	20	27	22	217	75.6%
2009 (Third Week)	410	378	32	9	349	20	36	29	263	75.4%
2008 (Third Week)	454	420	34	10	393	17	28	28	302	76.8%
2007 (Third Week)	446	402	44	8	379	15	34	30	302	79.7%

## Main Campus Domestic Trend Comparison September 19, 2011 Fall 2011



## In-state High School Market Profile

September 19, 2011

Fall 2011

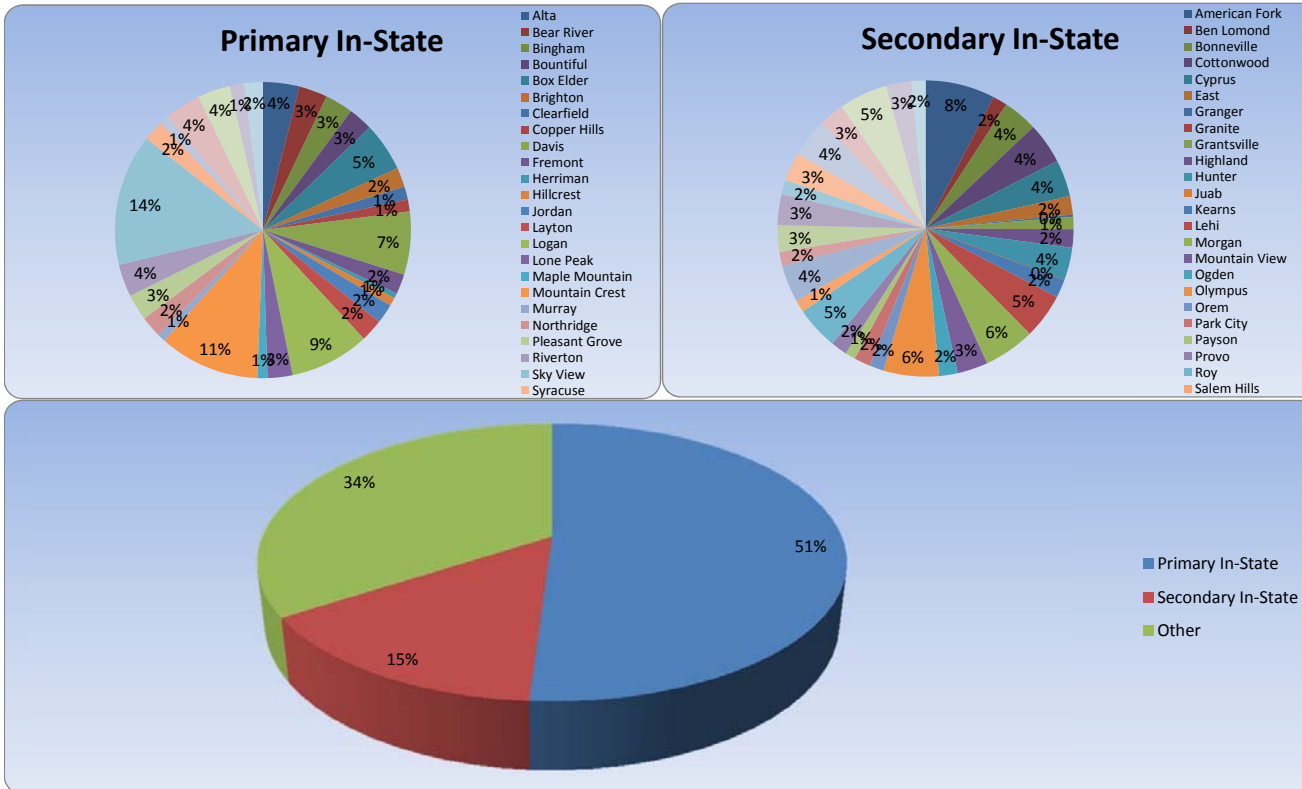
	Primary In-State													
	Fall 2011							Fall 2010						
	Total	Complete	Incomplete	Evaluation	Admitted	Denied	Enrolled	Total	Complete	Incomplete	Evaluation	Admitted	Denied	Enrolled
Alta	155	148	7	0	148	0	61	180	170	10	0	167	3	67
Bear River	70	70	0	0	70	0	48	77	75	2	0	74	1	51
Bingham	139	131	8	0	130	1	47	135	131	4	0	127	4	59
Bountiful	107	101	6	0	100	1	41	120	111	9	0	110	1	50
Box Elder	138	132	6	0	130	2	82	102	101	1	0	99	2	59
Brighton	82	79	3	0	79	0	33	99	93	6	0	92	1	44
Clearfield	52	47	5	0	45	2	22	52	48	4	0	47	1	30
Copper Hills	66	62	4	0	60	2	20	60	57	3	0	57	0	22
Davis	255	245	10	0	244	1	106	235	215	20	0	212	3	96
Fremont	62	60	2	0	60	0	34	71	67	4	0	67	0	38
Herriman	25	23	2	0	22	1	8							
Hillcrest	61	53	8	0	52	1	14	60	59	1	0	57	2	22
Jordan	87	81	6	0	81	0	33	60	58	2	0	56	2	20
Layton	107	103	4	0	102	1	38	99	90	9	0	88	2	44
Logan	193	188	5	1	186	1	134	192	181	11	0	179	2	133
Lone Peak	170	165	5	0	162	3	42	164	155	9	0	155	0	42
Maple Mountain	47	42	5	0	42	0	17	27	25	2	0	25	0	8
Mountain Crest	224	217	7	2	215	0	169	253	243	10	0	236	7	194
Murray	48	45	3	0	45	0	14	87	84	3	0	83	1	32
Northridge	85	80	5	0	79	1	36	67	62	5	0	61	1	23
Pleasant Grove	114	106	8	0	105	1	44	98	90	8	0	88	2	28
Riverton	135	128	7	0	126	2	55	124	109	15	0	108	1	49
Sky View	286	283	3	0	281	2	221	255	245	10	0	243	2	196
Syracuse	80	72	8	0	71	1	35	67	62	5	0	61	1	26
Taylorsville	31	30	1	0	30	0	16	54	52	2	0	51	1	23
Viewmont	140	136	4	0	135	1	60	172	164	8	0	164	0	81
Weber	132	122	10	0	121	1	56	122	115	7	0	115	0	62
West Jordan	59	55	4	0	54	1	23	61	59	2	0	59	0	25
Woods Crossing	101	96	5	0	96	0	32	96	91	5	0	90	1	34
<b>Total</b>	<b>3251</b>	<b>3100</b>	<b>151</b>	<b>3</b>	<b>3071</b>	<b>26</b>	<b>1541</b>	<b>3189</b>	<b>3012</b>	<b>177</b>	<b>0</b>	<b>2971</b>	<b>41</b>	<b>1558</b>

	Secondary In-State													
	Fall 2011							Fall 2010						
	Total	Complete	Incomplete	Evaluation	Admitted	Denied	Enrolled	Total	Complete	Incomplete	Evaluation	Admitted	Denied	Enrolled
American Fork	116	112	4	0	112	0	34	82	75	7	0	75	0	27
Ben Lomond	12	10	2	0	10	0	7	13	7	6	0	7	0	4
Bonneville	40	39	1	0	39	0	17	33	33	0	0	33	0	13
Cottonwood	56	54	2	0	54	0	20	39	39	0	0	39	0	15
Cyprus	44	36	8	0	35	1	18	34	27	7	0	27	0	13
East	41	36	5	0	35	1	9	43	40	3	0	38	2	13
Granger	8	7	1	0	6	1	1	6	4	2	0	4	0	0
Granite	0	0						1	1	0	0	1	0	1
Grantsville	17	16	1	0	16	0	6	18	18	0	0	18	0	5
Highland	35	32	3	0	30	2	9	24	23	1	0	23	0	9
Hunter	51	47	4	0	46	1	16	42	38	4	0	38	0	13
Juab	11	10	1	0	10	0	0	15	14	1	0	14	0	2
Kearns	34	28	6	0	27	1	9	34	32	2	0	30	2	19
Lehi	66	62	4	0	62	0	22	81	77	4	0	76	1	24
Morgan	53	53	0	0	52	1	25	43	39	4	0	39	0	21
Mountain View	57	55	2	0	55	0	15	40	37	3	0	36	1	17
Ogden	29	22	7	0	20	2	9	36	29	7	0	28	1	11
Olympus	98	86	12	0	84	2	27	66	60	6	0	57	3	23
Orem	45	42	3	0	41	1	7	36	33	3	0	33	0	10
Park City	26	24	2	0	23	1	8							
Payson	31	31	0	0	29	2	5	36	34	2	0	34	0	19
Provo	24	21	3	0	21	0	8	18	17	1	0	17	0	4
Roy	43	41	2	0	41	0	21	30	27	3	0	27	0	11
Salem Hills	38	33	5	0	33	0	6	37	35	2	0	35	0	14
Skyline	66	63	3	0	63	0	18	68	66	2	0	64	2	23
Spanish Fork	34	33	1	0	31	2	7	33	32	1	0	31	1	14
Springville	49	46	3	0	46	0	13	78	73	5	0	73	0	31
Timpanogos	53	52	1	0	52	0	15	48	44	4	0	42	2	16
Timpvew	34	33	1	0	32	1	7	29	27	2	0	27	0	2
Tooele	28	26	2	0	26	0	14	39	37	2	0	36	1	16
Uintah	37	33	4	0	33	0	19	52	43	9	0	43	0	25
Union	17	17	0	0	17	0	12	13	12	1	0	12	0	3
Wasatch	55	54	1	0	54	0	24	58	58	0	0	58	0	30
West	26	25	1	0	24	1	12	15	15	0	0	12	3	5
West Lake	29	24	5	0	23	1	7	19	17	2	0	17	0	7
<b>Total</b>	<b>1403</b>	<b>1303</b>	<b>100</b>	<b>0</b>	<b>1282</b>	<b>21</b>	<b>447</b>	<b>1259</b>	<b>1163</b>	<b>96</b>	<b>0</b>	<b>1144</b>	<b>19</b>	<b>460</b>

# High School Market Distribution

September 19, 2011

Fall 2011



**High School State Profile**  
 September 19, 2011  
 Fall 2011

	Fall 2011							Fall 2010						
	Total	Complete	Incomplete	Evaluation	Admitted	Denied	Enrolled	Total	Complete	Incomplete	Evaluation	Admitted	Denied	Enrolled
Alabama	3	3	0	0	3	0	2							
Alaska	18	16	2	0	16	0	6							
Arizona	86	73	13	0	71	2	26							
Arkansas	7	7	0	0	7	0	2							
California	218	185	33	0	166	19	52							
Colorado	148	138	10	1	135	2	55							
Connecticut	8	8	0	1	7	0	1							
Florida	19	17	2	0	14	3	6							
Georgia	11	11	0	0	9	2	3							
Hawaii	25	23	2	0	19	4	2							
Idaho	821	767	54	1	755	11	322							
Illinois	56	49	7	1	44	4	15							
Indiana	12	11	1	0	11	0	3							
Iowa	8	8	0	0	8	0	3							
Kansas	6	6	0	0	6	0	3							
Kentucky	7	7	0	0	7	0	0							
Louisiana	0	0	0	0	0	0	0							
Maine	4	4	0	0	3	1	1							
Maryland	16	12	4	0	12	0	2							
Massachusetts	17	17	0	0	16	1	1							
Michigan	17	16	1	0	15	1	4							
Minnesota	11	11	0	0	11	0	7							
Mississippi	1	1	0	0	1	0	0							
Missouri	12	12	0	0	12	0	4							
Montana	24	22	2	0	21	1	12							
Nebraska	10	8	2	0	8	0	4							
Nevada	159	143	16	0	138	5	60							
New Hampshire	11	10	1	0	9	1	2							
New Jersey	11	9	2	0	8	1	3							
New Mexico	11	8	3	0	6	2	2							
New York	30	26	4	0	24	2	8							
North Carolina	10	9	1	0	9	0	3							
North Dakota	1	1	0	0	1	0	0							
Ohio	20	17	3	0	17	0	2							
Oklahoma	5	4	1	0	4	0	2							
Oregon	46	43	3	0	39	4	14							
Pennsylvania	28	26	2	0	22	4	9							
Rhode Island	0	0	0	0	0	0	0							
South Carolina	5	3	2	0	3	0	0							
South Dakota	6	6	0	0	6	0	3							
Tennessee	7	6	1	0	6	0	4							
Texas	57	56	1	0	54	2	21							
Vermont	1	1	0	0	1	0	0							
Virginia	24	23	1	0	23	0	7							
Washington	83	74	9	2	69	3	28							
West Virginia	1	1	0	0	1	0	0							
Wisconsin	13	13	0	0	13	0	3							
Wyoming	123	115	8	0	108	7	46							
<b>Total</b>	<b>2217</b>	<b>2026</b>	<b>191</b>	<b>6</b>	<b>1938</b>	<b>82</b>	<b>753</b>							

## Out of State High School Regions

September 19, 2011

Fall 2011

	Alaska													
	Fall 2011							Fall 2010						
	Total	Complete	Incomplete	Evaluation	Admitted	Denied	Enrolled	Total	Complete	Incomplete	Evaluation	Admitted	Denied	Enrolled
ANCHORAGE	7	7	0	0	7	0	1							
<b>Total</b>	7	7	0	0	7	0	1	0	0	0	0	0	0	0

	Arizona													
	Fall 2011							Fall 2010						
	Total	Complete	Incomplete	Evaluation	Admitted	Denied	Enrolled	Total	Complete	Incomplete	Evaluation	Admitted	Denied	Enrolled
FLAGSTAFF/PRESCOTT	4	3	1	0	3	0	0							
PHOENIX (GILBERT/MESA)	48	41	7	0	41	0	18							
PHOENIX (GLENDALE/SCOTTSDALE)	19	15	4	0	14	1	3							
TUCSON	4	3	1	0	3	0	1							
<b>Total</b>	75	62	13	0	61	1	22	0	0	0	0	0	0	0

	California													
	Fall 2011							Fall 2010						
	Total	Complete	Incomplete	Evaluation	Admitted	Denied	Enrolled	Total	Complete	Incomplete	Evaluation	Admitted	Denied	Enrolled
BAY AREA	17	14	3	0	13	1	4							
FRESNO	5	5	0	0	5	0	2							
LA	24	20	4	0	16	4	3							
LA EAST	22	18	4	0	15	3	3							
ORANGE COUNTY	36	32	4	0	32	0	12							
SACRAMENTO	24	19	5	0	17	2	4							
SAN DIEGO	26	24	2	0	22	2	6							
<b>Total</b>	154	132	22	0	120	12	34	0	0	0	0	0	0	0

	Colorado													
	Fall 2011							Fall 2010						
	Total	Complete	Incomplete	Evaluation	Admitted	Denied	Enrolled	Total	Complete	Incomplete	Evaluation	Admitted	Denied	Enrolled
COLORADO SPRINGS	24	24	0	0	24	0	8							
DENVER	69	63	6	1	62	0	26							
FORT COLLINS	27	25	2	0	25	0	11							
GRAND JUNCTION	9	8	1	0	7	1	2							
<b>Total</b>	129	120	9	1	118	1	47	0	0	0	0	0	0	0

	Illinois													
	Fall 2011							Fall 2010						
	Total	Complete	Incomplete	Evaluation	Admitted	Denied	Enrolled	Total	Complete	Incomplete	Evaluation	Admitted	Denied	Enrolled
LIBERTYVILLE	10	8	2	1	7	0	1							
NAPERVILLE	18	15	3	0	14	1	4							
<b>Total</b>	28	23	5	1	21	1	5	0	0	0	0	0	0	0

	Montana													
	Fall 2011							Fall 2010						
	Total	Complete	Incomplete	Evaluation	Admitted	Denied	Enrolled	Total	Complete	Incomplete	Evaluation	Admitted	Denied	Enrolled
BILLINGS/BOSEMAN	3	3	0	0	3	0	2							
WEST	15	14	1	0	13	1	7							
<b>Total</b>	18	17	1	0	16	1	9	0	0	0	0	0	0	0

	Nevada													
	Fall 2011							Fall 2010						
	Total	Complete	Incomplete	Evaluation	Admitted	Denied	Enrolled	Total	Complete	Incomplete	Evaluation	Admitted	Denied	Enrolled
LAS VEGAS	115	102	13	0	98	4	37							
MESQUITE/MOAPA	14	13	1	0	13	0	8							
RENO	11	11	0	0	11	0	7							
<b>Total</b>	140	126	14	0	122	4	52	0	0	0	0	0	0	0

	Oregon													
	Fall 2011							Fall 2010						
	Total	Complete	Incomplete	Evaluation	Admitted	Denied	Enrolled	Total	Complete	Incomplete	Evaluation	Admitted	Denied	Enrolled
OR/ID BORDER	5	5	0	0	4	1	2							
PORTLAND	22	20	2	0	19	1	6							
SALEM/CORVALLIS	3	3	0	0	2	1	0							
<b>Total</b>	30	28	2	0	25	3	9	0	0	0	0	0	0	0

	Texas													
	Fall 2011							Fall 2010						
	Total	Complete	Incomplete	Evaluation	Admitted	Denied	Enrolled	Total	Complete	Incomplete	Evaluation	Admitted	Denied	Enrolled
DALLAS (GRAPEVINE/FLOWER MOUND)	8	8	0	0	8	0	2							
DALLAS (PLANO/MCKINNEY)	3	3	0	0	3	0	1							
HOUSTON NORTH	3	3	0	0	2	1	1							
<b>Total</b>	14	14	0	0	13	1	4	0	0	0	0	0	0	0

	Washington													
	Fall 2011							Fall 2010						
	Total	Complete	Incomplete	Evaluation	Admitted	Denied	Enrolled	Total	Complete	Incomplete	Evaluation	Admitted	Denied	Enrolled
OLYMPIA/TACOMA	16	11	5	0	11	0	3							
SEATTLE	22	21	1	0	20	1	7							
SPOKANE	9	9	0	0	9	0	1							
TRI CITIES	12	11	1	0	10	1	6							
VANCOUVER	10	8	2	1	7	0	5							
<b>Total</b>	69	60	9	1	57	2	22	0	0	0	0	0	0	0

## Transfer Market Profile

September 19, 2011

Fall 2011

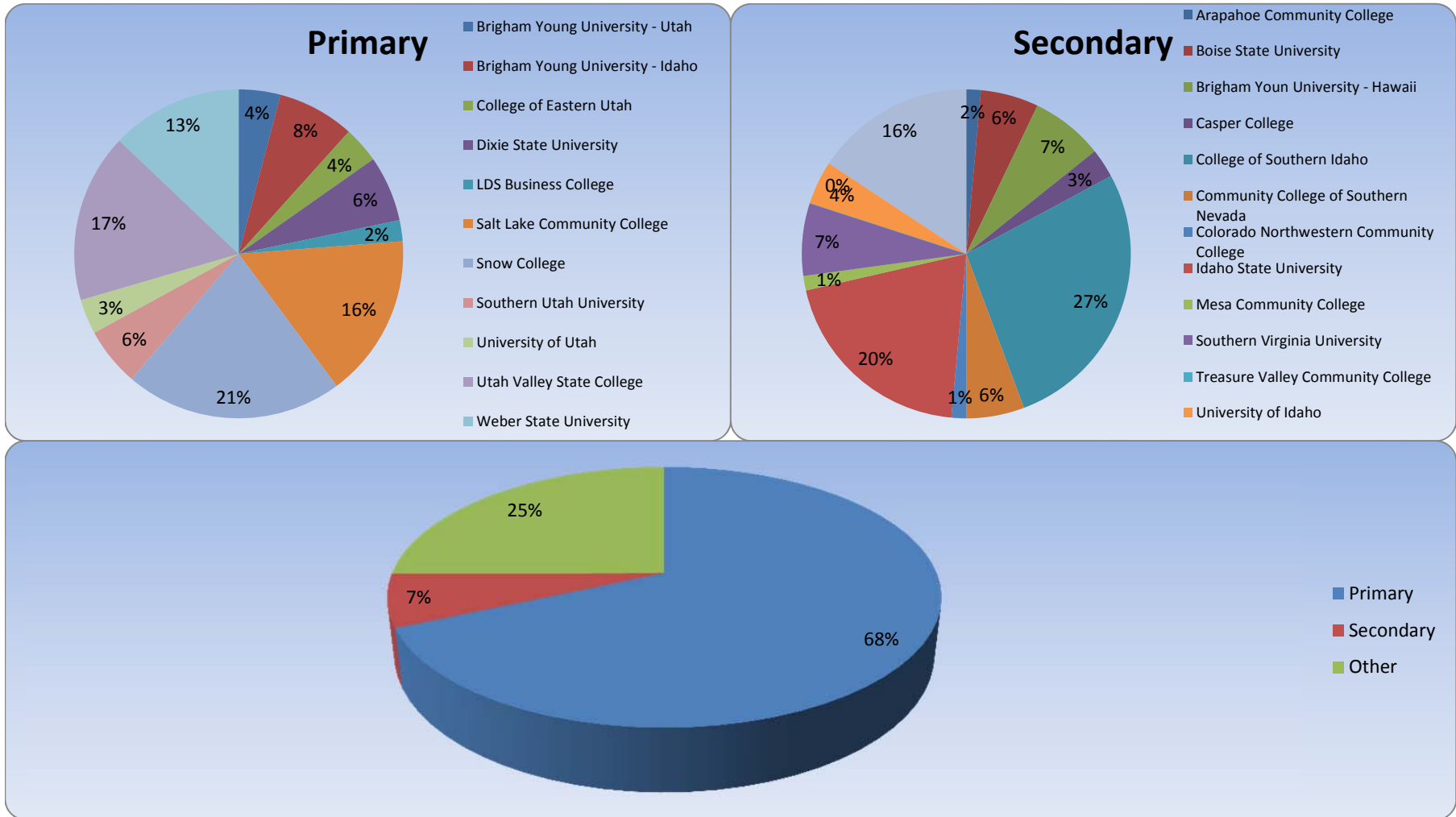
	Primary													
	Fall 2011							Fall 2010						
	Total	Complete	Incomplete	Evaluation	Admitted	Denied	Enrolled	Total	Complete	Incomplete	Evaluation	Admitted	Denied	Enrolled
Brigham Young University - Utah	61	53	8	0	50	3	30	85	70	15	1	68	1	37
Brigham Young University - Idaho	124	113	11	0	112	1	55	115	102	13	1	100	1	44
College of Eastern Utah	50	45	5	0	45	0	26	65	48	17	0	48	0	20
Dixie State University	80	72	8	0	71	1	47	104	93	11	0	92	1	47
LDS Business College	44	28	16	0	28	0	15	31	29	2	0	29	0	9
Salt Lake Community College	209	179	30	0	168	11	117	196	157	39	4	142	11	78
Snow College	284	242	42	1	239	2	156	274	233	41	1	228	4	123
Southern Utah University	81	70	11	0	66	4	42	76	63	13	1	61	1	34
University of Utah	58	45	13	0	45	0	25	64	52	12	1	51	0	31
Utah Valley State College	182	169	13	0	165	4	121	153	137	16	6	127	4	66
Weber State University	166	147	19	1	142	4	94	175	154	21	3	145	6	92
<b>Total</b>	<b>1339</b>	<b>1163</b>	<b>176</b>	<b>2</b>	<b>1131</b>	<b>30</b>	<b>728</b>	<b>1338</b>	<b>1138</b>	<b>200</b>	<b>18</b>	<b>1091</b>	<b>29</b>	<b>581</b>

	Secondary													
	Fall 2011							Fall 2010						
	Total	Complete	Incomplete	Evaluation	Admitted	Denied	Enrolled	Total	Complete	Incomplete	Evaluation	Admitted	Denied	Enrolled
Arapahoe Community College	3	3	0	0	3	0	1	0	0	0	0	0	0	0
Boise State University	12	9	3	0	8	1	4	20	14	6	0	14	0	7
Brigham Young University - Hawaii	12	9	3	0	9	0	5	12	12	0	0	12	0	4
Casper College	3	3	0	0	3	0	2	7	6	1	0	6	0	2
College of Southern Idaho	46	38	8	0	36	2	19	39	32	7	0	32	0	14
Community College of Southern Nevada	6	6	0	0	6	0	4	8	8	0	0	8	0	2
Colorado Northwestern Community College	2	2	0	0	1	1	1	1	1	0	0	1	0	0
Idaho State University	32	25	7	0	23	2	14	38	31	7	0	28	3	16
Mesa Community College	2	1	1	0	1	0	1	6	3	3	0	3	0	1
Southern Virginia University	7	7	0	0	7	0	5	6	4	2	0	4	0	2
Treasure Valley Community College	0	0	0	0	0	0	0	7	7	0	0	7	0	6
University of Idaho	4	3	1	0	3	0	3	2	2	0	1	1	0	1
Western Wyoming Community College	41	25	16	0	25	0	11	36	34	2	0	34	0	18
<b>Total</b>	<b>170</b>	<b>131</b>	<b>39</b>	<b>0</b>	<b>125</b>	<b>6</b>	<b>70</b>	<b>182</b>	<b>154</b>	<b>28</b>	<b>1</b>	<b>150</b>	<b>3</b>	<b>73</b>

# Transfer Market Distribution

September 19, 2011

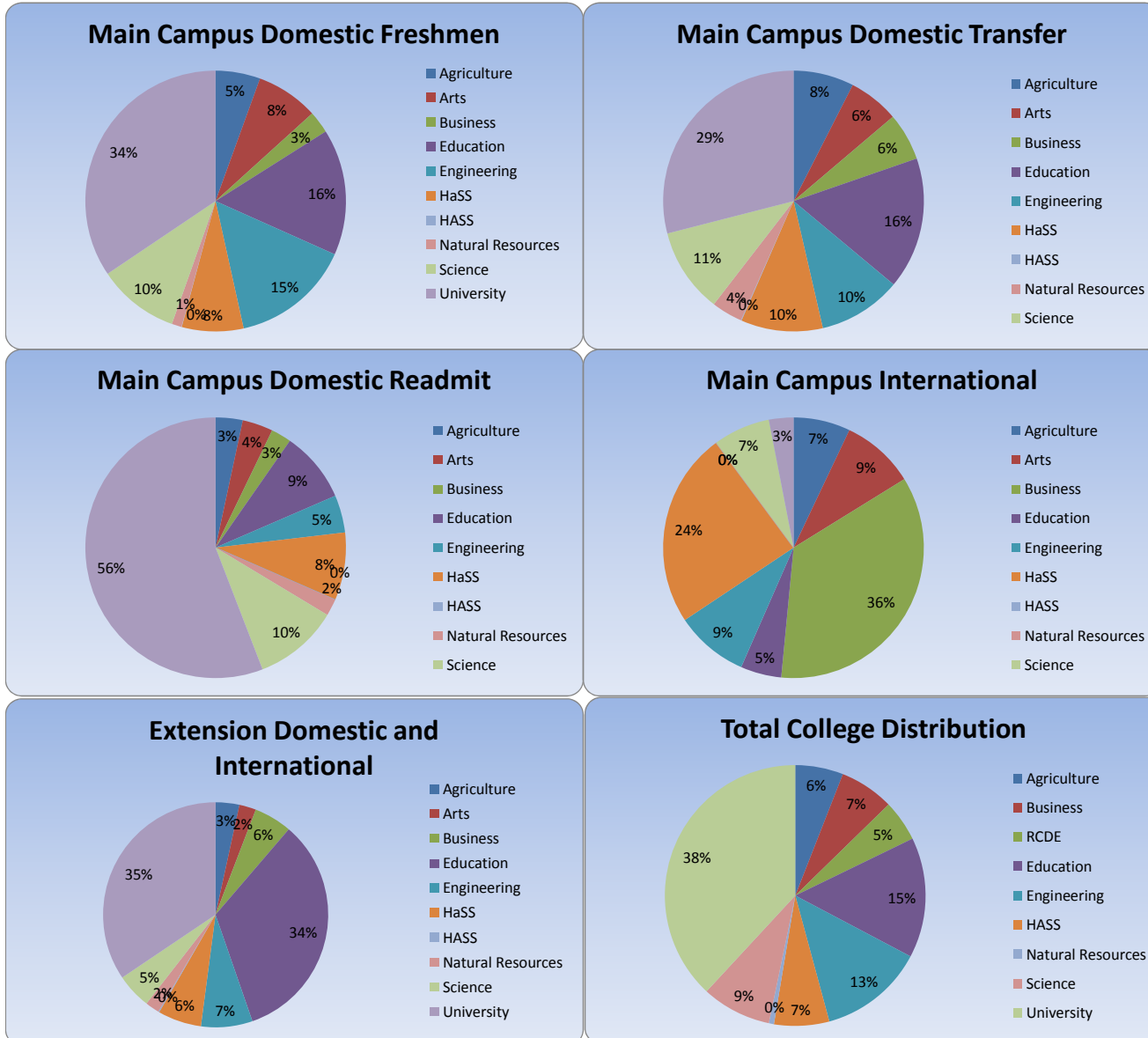
Fall 2011



**College Profile**  
**September 19, 2011**  
**Fall 2011**

		Fall 2011							Fall 2010						
		Total							9/22/2010						
		Total	Complete	Incomplete	Evaluation	Admitted	Denied	Enrolled	Total	Complete	Incomplete	Evaluation	Admitted	Denied	Enrolled
Main Campus Domestic Freshmen	Agriculture	344	319	25	0	318	1	167	302	276	26	0	273	3	134
	Arts	579	539	40	0	537	2	234	245	241	4	0	241	0	202
	Business	307	253	54	0	249	4	83	287	232	55	0	230	2	86
	Education	1101	1029	72	1	1022	6	473	999	906	93	1	898	7	443
	Engineering	994	944	50	2	932	10	449	926	858	68	0	856	2	394
	HaSS	621	571	50	0	570	1	230	287	279	8	0	279	0	248
	HASS	7	6	1	0	6	0	1	698	606	92	1	600	5	38
	Natural Resources	108	97	11	0	97	0	37	116	105	11	1	104	0	44
	Science	869	810	59	0	806	4	306	824	764	60	2	760	2	297
	University	2718	2556	162	11	2418	127	1040	2657	2448	209	6	2341	101	991
<b>Total</b>		<b>7648</b>	<b>7124</b>	<b>524</b>	<b>14</b>	<b>6955</b>	<b>155</b>	<b>3020</b>	<b>7341</b>	<b>6715</b>	<b>626</b>	<b>11</b>	<b>6582</b>	<b>122</b>	<b>2877</b>
Main Campus Domestic Transfer	Agriculture	143	128	15	0	128	0	80	108	98	10	0	97	1	74
	Arts	137	109	28	0	107	2	67	64	61	3	1	60	0	55
	Business	135	104	31	0	99	5	63	138	99	39	4	89	6	52
	Education	352	282	70	0	280	2	174	318	256	62	5	250	1	130
	Engineering	205	180	25	3	165	12	110	185	157	28	5	139	13	76
	HaSS	233	189	44	0	184	5	108	79	77	2	1	76	0	70
	HASS	4	2	2	0	2	0	1	224	152	72	6	144	2	11
	Natural Resources	66	57	9	1	53	3	41	54	47	7	2	44	1	23
	Science	230	196	34	0	194	2	112	215	173	42	2	168	3	90
	University	603	527	76	0	497	30	309	640	568	72	7	528	33	253
<b>Total</b>		<b>2108</b>	<b>1774</b>	<b>334</b>	<b>4</b>	<b>1709</b>	<b>61</b>	<b>1065</b>	<b>2025</b>	<b>1688</b>	<b>337</b>	<b>33</b>	<b>1595</b>	<b>60</b>	<b>834</b>
Main Campus Domestic Readmit	Agriculture	12	12	0	0	10	2	8	14	13	1	0	12	1	10
	Arts	13	13	0	1	11	1	9	13	13	0	0	11	2	9
	Business	13	13	0	0	11	2	6	11	8	3	0	7	1	6
	Education	36	36	0	0	33	3	21	42	33	9	2	30	1	24
	Engineering	19	17	2	0	10	7	11	16	11	5	2	8	1	4
	HaSS	38	38	0	2	31	5	20	29	26	3	1	23	2	20
	HASS	1	1	0	0	1	0	0	21	20	1	1	19	0	0
	Natural Resources	10	10	0	0	10	0	5	10	9	1	2	6	1	5
	Science	32	32	0	0	30	2	25	27	25	2	2	22	1	14
	University	214	194	20	4	180	10	133	169	144	25	8	125	11	87
<b>Total</b>		<b>388</b>	<b>366</b>	<b>22</b>	<b>7</b>	<b>327</b>	<b>32</b>	<b>238</b>	<b>352</b>	<b>302</b>	<b>50</b>	<b>18</b>	<b>263</b>	<b>21</b>	<b>179</b>
Main Campus International	Agriculture	14	13	1	2	10	1	7	8	5	3	1	4	0	0
	Arts	12	9	3	0	9	0	9	1	1	0	0	1	0	1
	Business	96	77	19	34	37	6	35	55	38	17	18	18	2	0
	Education	9	7	2	1	4	2	5	6	6	0	2	4	0	2
	Engineering	68	53	15	22	21	10	9	43	39	4	12	23	4	10
	HaSS	66	57	9	2	51	4	24	32	32	0	2	29	1	1
	HASS	0	0	0	0	0	0	0	74	73	1	8	59	6	2
	Natural Resources	2	1	1	0	1	0	0	2	2	0	0	2	0	0
	Science	30	25	5	9	13	3	7	32	24	8	5	19	0	4
	University	12	12	0	0	12	0	3	19	19	0	0	18	1	4
<b>Total</b>		<b>309</b>	<b>254</b>	<b>55</b>	<b>70</b>	<b>158</b>	<b>26</b>	<b>99</b>	<b>272</b>	<b>239</b>	<b>33</b>	<b>48</b>	<b>177</b>	<b>14</b>	<b>24</b>
Extension Domestic and International	Agriculture	61	57	4	0	56	1	52	79	72	7	1	70	1	58
	Arts	46	38	8	0	38	0	37	25	23	2	0	23	0	20
	Business	128	108	20	1	103	4	83	100	75	25	4	71	0	38
	Education	713	650	74	2	637	11	511	552	468	84	23	438	7	310
	Engineering	126	121	5	0	115	6	113	115	107	8	1	103	3	85
	HaSS	128	115	13	0	111	4	96	80	77	3	0	76	1	71
	HASS	2	2	0	0	2	0	2	63	44	19	3	41	0	12
	Natural Resources	39	34	5	1	33	0	31	37	35	2	2	33	0	25
	Science	120	97	23	1	93	3	77	79	73	6	2	70	1	47
	University	713	654	59	7	617	30	526	748	684	64	34	635	15	398
<b>Total</b>		<b>2076</b>	<b>1876</b>	<b>211</b>	<b>12</b>	<b>1805</b>	<b>59</b>	<b>1528</b>	<b>1878</b>	<b>1658</b>	<b>220</b>	<b>70</b>	<b>1560</b>	<b>28</b>	<b>1064</b>

**College Distribution**  
 September 19, 2011  
 Fall 2011



# College of Agriculture

September 19, 2011

Fall 2011

Fall 2011 Domestic and International Applicants at any USU Campus							
Total							
	Total	Complete	Incomplete	Evaluation	Admitted	Denied	Enrolled
ACAJ_BS	9	8	1	1	7	0	4
ADVS_ANDS_BS	31	28	3	0	28	0	14
ADVS_BIOT_BS	6	6	0	0	6	0	2
ADVS_BS	136	124	12	0	124	0	74
ADVS_BVET_BS	33	32	1	0	31	1	21
ADVS_EQSM_BS	44	40	4	0	40	0	18
AGBU_BS	21	19	2	0	17	2	12
AGEC_BS	5	4	1	0	4	0	1
AGED_BS	19	17	2	0	17	0	12
AGMT_AAS	4	4	0	0	4	0	4
AGMT_CERU	5	5	0	0	5	0	2
AGMX_CERU	1	0	1	0	0	0	0
ASTE_BS	6	6	0	0	6	0	3
ESWS_BS	8	8	0	1	7	0	4
FCSE_BS	9	8	1	0	7	1	5
GEAG_PPRU	13	13	0	0	13	0	7
INAB_BA	6	6	0	0	6	0	5
ITDS_AG_BS	2	2	0	0	2	0	1
LAAR_BLA	44	36	8	0	35	1	22
LAAR_MLA	1	0	1	0	0	0	0
NAFS_BA	2	2	0	0	2	0	1
NAFS_BS	1	0	1	0	0	0	0
NDFS_BS	113	108	5	0	108	0	56
NDFS_NTSC_BS	1	1	0	0	1	0	1
ORHO_AAS	5	5	0	0	5	0	4
ORHO_CERU	1	0	1	0	0	0	0
ORHX_CERU	2	2	0	0	2	0	2
PLSC_BA	2	2	0	0	2	0	2
PLSC_BS	23	23	0	0	23	0	20
RLDC_BS	8	6	2	0	6	0	3

# Caine College of the Arts

September 19, 2011

Fall 2011

Fall 2011 Domestic and International Applicants at any USU Campus							
Total							
	Total	Complete	Incomplete	Evaluation	Admitted	Denied	Enrolled
ART_ARED_BFA	2	0	2	0	0	0	0
ART_CERM_BFA	1	1	0	0	1	0	1
ART_GRDE_BFA	2	2	0	0	2	0	2
ART_PHOT_BFA	2	2	0	0	2	0	2
ART_PPRU	251	228	23	0	227	1	117
INDE_PPRU	112	103	9	1	101	1	56
MUSC_MEGE_BM	1	1	0	0	1	0	1
MUSC_PPRU	17	16	1	0	16	0	8
MUSCBANDPPRU	33	27	6	0	27	0	10
MUSCBANDUNDE	12	11	1	0	11	0	6
MUSCGUITPPRU	16	15	1	0	15	0	5
MUSCGUITUNDE	7	6	1	0	6	0	3
MUSCPIANPPRU	30	30	0	0	30	0	14
MUSCPIANUNDE	10	8	2	0	7	1	4
MUSCSTRIPPRU	22	18	4	0	18	0	4
MUSCSTRIUUNDE	4	4	0	0	4	0	3
MUSCUNDE	7	6	1	0	6	0	4
MUSCVOCAPPRU	53	51	2	0	51	0	17
MUSCVOCAUNDE	27	24	3	0	24	0	13
MUTH_PPRU	52	50	2	0	50	0	25
MUTH_UNDE	16	11	5	0	11	0	6
THAR_BA	1	1	0	0	1	0	1
THAR_BFA	1	0	1	0	0	0	0
THAR_PPRU	93	78	15	0	76	2	38

# Jon M. Huntsman School of Business

September 19, 2011

Fall 2011

	Fall 2011 Domestic and International Applicants at any USU Campus						
	Total						
	Total	Complete	Incomplete	Evaluation	Admitted	Denied	Enrolled
ACCT_BA	39	29	10	6	22	1	10
ACCT_BS	60	48	12	3	44	1	20
BUAD_BA	24	12	12	0	10	2	2
BUAD_BS	47	43	4	0	42	1	17
BUSI_BA	71	60	11	12	47	1	30
BUSI_BS	137	116	21	6	106	4	65
ECON_BU_BA	19	17	2	0	17	0	10
ECON_BU_BS	25	22	3	0	22	0	12
ENTR_BA	15	12	3	0	12	0	8
ENTR_BS	22	15	7	0	15	0	9
FINA_BA	20	19	1	0	18	1	11
FINA_BS	29	25	4	0	24	1	15
HRMA_BA	10	6	4	0	5	1	4
HRMA_BS	7	7	0	0	6	1	3
HURE_MS	1	1	0	0	1	0	1
INBU_BA	23	17	6	0	15	2	6
INBU_BS	12	9	3	0	9	0	3
MARK_BA	33	29	4	0	28	1	10
MARK_BS	27	24	3	0	22	2	9
MBAG_MBA	1	0	1	0	0	0	1
MISY_BA	15	7	8	5	2	0	1
MISY_BS	14	11	3	2	8	1	4
OPMA_BA	4	3	1	0	3	0	0
OPMA_BS	4	3	1	0	3	0	1
OSSU_AAS	3	3	0	0	2	1	2

# Emma Eccles Jones College of Education and Human Services

September 19, 2011

Fall 2011

Fall 2011 Domestic and International Applicants at any USU Campus							
Total							
	Total	Complete	Incomplete	Evaluation	Admitted	Denied	Enrolled
CDDE_2BS	323	291	32	1	289	1	233
CDDE_BA	15	13	2	0	13	0	8
CDDE_BS	70	61	9	0	61	0	43
CDDE_ONLI_BS	91	77	14	0	73	4	55
CDDE_SLPA_BS	1	1	0	0	1	0	1
DECE_BA	12	11	1	0	11	0	8
DECE_BS	6	6	0	0	6	0	3
DEEE_BA	5	4	1	0	4	0	3
DEEE_BS	10	9	1	0	8	1	2
ECED_BS	3	3	0	0	3	0	2
ECED_PPRU	71	63	8	0	62	1	32
ECEF_BA	26	22	4	0	21	1	14
ECEF_BS	12	8	4	0	8	0	6
ELED_BS	7	5	2	0	5	0	4
ELED_PPRU	492	450	42	0	447	3	233
FACS_PPRU	41	37	4	0	37	0	19
FCHD_BS	1	1	0	0	0	1	0
FCHD_PPRU	50	47	3	0	47	0	29
FLST_PPRU	37	28	9	0	27	1	17
HEPR_PPRU	4	4	0	0	4	0	3
HESP_PPRU	34	31	3	1	29	1	18
HMSC_BS	2	2	0	0	2	0	1
HMSC_EXSC_BS	125	114	11	0	113	1	58
HMSC_PHET_BS	28	24	4	0	23	1	9
HMSC_PPTH_BS	93	82	11	0	82	0	35
ITDS_ED_BS	2	1	1	0	1	0	2
MMEN_CERU	2	2	0	0	2	0	2
PARE_BS	14	13	1	0	13	0	6
PHED_BS	1	1	0	0	1	0	1
PHED_PPTH_BS	3	0	3	0	0	0	0
PHED_TEAC_BS	1	0	1	0	0	0	0
PSTE_BA	4	2	2	0	2	0	1
PSTE_BS	3	3	0	0	3	0	2
PSYC_BA	1	1	0	0	1	0	1
PSYC_BS	3	3	0	0	3	0	3

**College of Engineering**  
**September 19, 2011**  
**Fall 2011**

Fall 2011 Domestic and International Applicants at any USU Campus							
Total							
	Total	Complete	Incomplete	Evaluation	Admitted	Denied	Enrolled
ATMM_BS	32	29	3	0	28	1	12
ATMM_PPRU	1	1	0	0	0	1	0
ATPP_BS	113	104	9	0	99	5	42
ATPP_PPRU	9	7	2	0	7	0	2
BIEN_BS	1	1	0	0	1	0	1
BIEN_PPRU	78	75	3	0	74	1	42
BIEN_PREM_BS	1	1	0	0	1	0	1
CIEN_BS	1	1	0	0	1	0	1
CIEN_PPRU	132	126	6	6	119	1	60
CMPE_BS	1	1	0	0	1	0	1
CMPE_PPRU	65	60	5	3	52	5	29
ELEN_BS	1	1	0	0	1	0	0
ELEN_PPRU	73	54	19	3	46	5	30
ENVE_BS	1	0	1	0	0	0	0
ENVE_PPRU	41	35	6	6	29	0	11
ETED_BS	16	14	2	0	14	0	5
GENG_PPRU	254	239	15	0	236	3	122
MEEN_AS_PPRU	194	186	8	1	181	4	105
MEEN_BS	2	2	0	0	2	0	1
MEEN_MS	1	1	0	0	0	1	1
MEEN_PPRU	316	298	18	8	271	19	147

# College of Humanities and Social Sciences

September 19, 2011

Fall 2011

Fall 2011 Domestic and International Applicants at any USU Campus							
Total							
	Total	Complete	Incomplete	Evaluation	Admitted	Denied	Enrolled
AMST_BA	4	4	0	0	2	2	3
AMST_BS	3	2	1	0	2	0	2
ANTH_BA	17	14	3	0	14	0	4
ANTH_BS	35	32	3	0	32	0	14
ASIA_BA	12	12	0	0	12	0	7
ENGL_BA	83	79	4	0	79	0	28
ENGL_BS	68	63	5	1	62	0	31
ENGL_CRWR_BS	1	1	0	0	0	1	0
ENGL_ENGT_BA	25	23	2	0	23	0	12
ENGL_ENGT_BS	27	26	1	0	26	0	14
ENGT_BA	1	1	0	0	1	0	1
ENGT_BS	4	3	1	0	3	0	2
FREN_BA	1	1	0	0	1	0	0
GRMN_BA	4	3	1	0	3	0	3
GRMN_GETE_BA	2	1	1	0	1	0	0
HIST_BA	1	1	0	0	1	0	1
HIST_BS	4	4	0	0	4	0	2
HIST_HTCH_BA	2	2	0	0	2	0	0
HIST_HTCH_BS	2	2	0	0	2	0	2
HIST_PPRU	57	50	7	0	49	1	20
HISTHTCHPPRU	58	56	2	0	54	2	30
IELI_PPRU	56	48	8	0	46	2	22
INTS_HS_BA	15	13	2	0	13	0	7
ITDS_HS_BS	4	4	0	0	4	0	3
ITDS_HU_BS	1	1	0	0	0	1	0
JOUR_BA	2	2	0	0	2	0	2
JOUR_BS	1	0	1	0	0	0	0
JOUR_PPRU	99	87	12	0	86	1	37
LACS_BA	30	27	3	0	27	0	12
LACS_BS	52	45	7	1	44	0	18
LBAR_BA	25	20	5	0	17	3	11
PHIL_BA	1	1	0	0	1	0	0
POLS_BA	37	32	5	0	31	1	14
POLS_BS	50	44	6	0	43	1	24
RELS_BA	6	5	1	0	5	0	3
RELS_BS	7	7	0	0	6	1	4
SOCI_BA	21	20	1	0	20	0	7
SOCI_BS	38	34	4	1	33	0	18
SOCI_SOCT_BS	1	0	1	0	0	0	0

**College of Humanities, Arts, and Social Sciences**  
**September 19, 2011**  
**Fall 2011**

Fall 2011 Domestic and International Applicants at any USU Campus							
Total							
	Total	Complete	Incomplete	Evaluation	Admitted	Denied	Enrolled
ANTH_BS	1	0	1	0	0	0	0
ART_PPRU	2	2	0	0	2	0	1
ENGL_BA	1	1	0	0	1	0	0
ENGL_ENGT_BS	1	1	0	0	1	0	0
HIST_BS	1	1	0	0	1	0	0
JOUR_PPRU	1	1	0	0	1	0	0
MUSC_PPRU	1	1	0	0	1	0	1
MUSCPIANPPRU	1	1	0	0	1	0	0
SOCI_BS	1	0	1	0	0	0	0
SOWO_BS	2	1	1	0	1	0	0

**College of Natural Resources**  
**September 19, 2011**  
**Fall 2011**

Fall 2011 Domestic and International Applicants at any USU Campus							
Total							
	Total	Complete	Incomplete	Evaluation	Admitted	Denied	Enrolled
CREC_BS	10	10	0	0	9	1	7
ENST_BS	27	22	5	0	22	0	9
FAAS_BS	13	10	3	0	10	0	5
FORE_BS	20	18	2	0	17	1	10
GEOG_BS	9	6	3	1	5	0	2
GEOT_BS	2	2	0	0	2	0	1
NRUN_PPRU	15	15	0	0	15	0	8
RARE_BS	4	4	0	0	3	1	2
RRMG_BS	20	16	4	0	16	0	9
WAES_BS	5	5	0	0	5	0	4
WISC_BS	79	70	9	1	69	0	35

# College of Science

September 19, 2011

Fall 2011

	Fall 2011 Domestic and International Applicants at any USU Campus						
	Total						
	Total	Complete	Incomplete	Evaluation	Admitted	Denied	Enrolled
AEGE_BS	4	4	0	0	4	0	1
BIOC_BS	85	75	10	1	74	0	24
BIOL_BA	2	1	1	0	1	0	0
BIOL_BIOL_BA	65	62	3	0	62	0	23
BIOL_BIOL_BS	320	299	21	2	292	5	134
BIOL_BS	11	5	6	0	5	0	3
BIOL_CEMO_BA	14	12	2	0	12	0	6
BIOL_CEMO_BS	46	44	2	0	44	0	18
BIOL_ECBD_BA	3	3	0	0	3	0	3
BIOL_ECBD_BS	18	17	1	0	17	0	8
BIOL_ENVR_BA	9	6	3	0	6	0	0
BIOL_ENVR_BS	15	13	2	0	12	1	3
BSCT_BA	2	2	0	0	2	0	1
BSCT_BS	11	10	1	0	10	0	6
CHEM_BA	20	18	2	0	18	0	6
CHEM_BS	90	84	6	1	83	0	37
CHEM_CHED_BS	1	0	1	0	0	0	0
CHTE_BA	1	0	1	0	0	0	0
CHTE_BS	3	3	0	0	3	0	2
COSC_BA	3	3	0	0	3	0	2
COSC_BS	9	9	0	0	9	0	5
COSC_PPRU	137	121	16	5	113	3	64
CTES_BS	3	3	0	0	3	0	1
CTPS_CHEM_BS	1	1	0	0	1	0	0
CTPS_PHYX_BS	2	2	0	0	2	0	2
GEOL_BA	3	3	0	0	3	0	2
GEOL_BS	14	12	2	0	12	0	6
MAED_BA	15	15	0	0	15	0	6
MAED_BS	48	41	7	0	41	0	19
MAST_BA	2	2	0	0	2	0	2
MAST_BS	5	4	1	0	3	1	3
MATH_BA	14	9	5	0	8	1	4
MATH_BS	46	42	4	0	42	0	20
MATH_MS	1	0	1	0	0	0	0
MSCT_BS	2	2	0	0	2	0	0
NURS_PPRU	1	0	1	0	0	0	0
PHXT_BS	3	0	3	0	0	0	0
PHYX_BA	11	10	1	0	10	0	2
PHYX_BS	37	35	2	0	34	1	13
PUHE_BS	94	88	6	1	86	1	40
PUHE_ENHE_BS	18	18	0	0	18	0	8
PUHE_INHY_BS	14	13	1	0	13	0	7
PUHE_PHEE_BS	37	28	9	0	28	0	11
STAT_BA	1	1	0	0	1	0	1
STAT_BS	11	11	0	0	10	1	6

**University Studies**  
**September 19, 2011**  
**Fall 2011**

Fall 2011 Domestic and International Applicants at any USU Campus							
Total							
	Total	Complete	Incomplete	Evaluation	Admitted	Denied	Enrolled
AS_GENS_EDUC	1	1	0	0	1	0	1
GENS_AS	3	3	0	0	3	0	3
GENS_CI_PPRU	1	1	0	0	1	0	1
GENS_PPRU	1	1	0	0	1	0	1
NOMA_NDGM	1	1	0	0	0	1	0
NOMA_NDUG	6	5	1	0	4	1	5
RCDE_NDUG	2	0	2	0	0	0	1
UALL_PPRU	553	474	79	1	462	11	185
UBUS_PPRU	598	584	14	1	578	5	295
UNDE_PPRU	2901	2680	221	20	2481	179	1327

## GLOSSARY

Total	<i>All applications received for particular student type. Sum of incomplete, evaluation, admitted, and denied.</i>	
Incomplete	<i>Applications that have not been evaluated and are missing checklist items.</i>	
Evaluation	<i>Complete applications that do not have a decision and are being evaluated by processor, referral, or committee.</i>	
Admitted	<i>Students who have been offered acceptance to the university.</i>	
Denied	<i>Students not accepted to USU main campus.</i>	
Complete Applications	<i>Applications that have are able to have a decision made. Sum of evaluation, admitted, and denied.</i>	
Enrolled	<i>Students who are enrolled for any number of credits above zero.</i>	
Resident	<i>Students who have been determined to have Utah residency for tuition purposes.</i>	
Non-resident	<i>Students who have been determined to have out-of-state residency for tuition purposes.</i>	
Undetermined	<i>Students who have not had a residency evaluation for tuition purposes.</i>	
International	<i>Students who have been determined to have international residency for tuition purposes.</i>	
Incomplete Rate	<i>Incomplete / Total</i>	<i>Percent of incomplete applications from total applications.</i>
Evaluation Rate	<i>Evaluation / Complete Applications</i>	<i>Percent of applications in evaluations from complete applications.</i>
Admitted Rate	<i>Admitted / Complete Applications</i>	<i>Percent of admitted applications from complete applications.</i>
Denied Rate	<i>Denied / Complete Applications</i>	<i>Percent of denied applications from complete applications.</i>
Complete Applications Rate	<i>Complete Applications / Total</i>	<i>Percent of complete applications from total applications.</i>
Yield (Enrolled Rate)	<i>Enrolled / Admitted</i>	<i>Percent of enrolled students from admitted applications.</i>
Main Campus	<i>Unregistered applicants who applied for Main Campus and applicants registered at Main Campus.</i>	
RCDE / Off Campus	<i>Unregistered applicants who applied for Off Campus and applicants registered at Off Campus.</i>	
Domestic	<i>Applicants applying as domestic freshmen, transfers, or returning students.</i>	
International	<i>Applicants applying as international freshmen, transfers, or returning students.</i>	
Freshmen	<i>The title Freshmen refers to first-time to higher education students</i>	

**Please refer to the AAA for official USU numbers.**