

Discover **Yourself.**

Fall 2012 Semester

Undergraduate Admissions Application Report

January 2, 2012

Office of Admissions

Domestic and International Applicants at Main Campus Summary

Includes Freshmen Starting in Summer for Comparison with AAA Report

January 2, 2012

Fall 2012

	Fall 2012 Freshmen Summary							Fall 2011 Freshmen Summary						
	Total							2/14/2011						
	Total	Complete	Incomplete	Evaluation	Admitted	Denied	Enrolled	Total	Complete	Incomplete	Evaluation	Admitted	Denied	Enrolled
Total	6932	4447	2485	358	4051	38	0	6984	6226	758	454	5691	81	0
Rate		64.2%	35.8%	8.1%	91.1%	0.9%	0.0%		89.1%	10.9%	7.3%	91.4%	1.3%	0.0%

	Freshmen Main Campus Totals													
	Total	Complete	Incomplete	Evaluation	Admitted	Denied	Enrolled	Total	Complete	Incomplete	Evaluation	Admitted	Denied	Enrolled
Fall Domestic	6795	4381	2414	338	4007	36	0	6922	6176	746	412	5683	81	0
Rate		64.5%	35.5%	7.7%	91.5%	0.8%	0.0%		89.2%	10.8%	6.7%	92.0%	1.3%	0.0%
Fall International	14	10	4	8	2	0	0	62	50	12	42	8	0	0
Rate		71.4%	28.6%	80.0%	20.0%	0.0%	0.0%		80.6%	19.4%	84.0%	16.0%	0.0%	0.0%
Summer Domestic	112	52	60	8	42	2	0	0	0					
Rate		46.4%	53.6%	15.4%	80.8%	3.8%	0.0%		0.0%	0.0%	0.0%	0.0%	0.0%	0.0%
Summer International	11	4	7	4	0	0	0	0	0					
Rate		36.4%	63.6%	100.0%	0.0%	0.0%	0.0%		0.0%	0.0%	0.0%	0.0%	0.0%	0.0%

	Fall 2012 Transfer Summary							Fall 2011 Transfer Summary						
	Total							2/14/2011						
	Total	Complete	Incomplete	Evaluation	Admitted	Denied	Enrolled	Total	Complete	Incomplete	Evaluation	Admitted	Denied	Enrolled
Total	563	277	286	9	267	1	0	1012	633	379	123	506	4	0
Rate		49.2%	50.8%	3.2%	96.4%	0.4%	0.0%		62.5%	37.5%	19.4%	79.9%	0.6%	0.0%

	Transfer Main Campus Totals													
	Total	Complete	Incomplete	Evaluation	Admitted	Denied	Enrolled	Total	Complete	Incomplete	Evaluation	Admitted	Denied	Enrolled
Fall Domestic	562	276	286	9	266	1	0	1009	630	379	123	503	4	0
Rate		49.1%	50.9%	3.3%	96.4%	0.4%	0.0%		62.4%	37.6%	19.5%	79.8%	0.6%	0.0%
Fall International	1	1	0	0	1	0	0	3	3	0	0	3	0	0
Rate		100.0%	0.0%	0.0%	100.0%	0.0%	0.0%		100.0%	0.0%	0.0%	100.0%	0.0%	0.0%

	Fall 2012 Readmit Summary							Fall 2011 Readmit Summary						
	Total							2/14/2011						
	Total	Complete	Incomplete	Evaluation	Admitted	Denied	Enrolled	Total	Complete	Incomplete	Evaluation	Admitted	Denied	Enrolled
Total	28	20	8	1	19	0	0	70	42	28	7	34	1	0
Rate		71.4%	28.6%	5.0%	95.0%	0.0%	0.0%		60.0%	40.0%	16.7%	81.0%	2.4%	0.0%

	Readmit Main Campus Totals													
	Total	Complete	Incomplete	Evaluation	Admitted	Denied	Enrolled	Total	Complete	Incomplete	Evaluation	Admitted	Denied	Enrolled
Fall Domestic	28	20	8	1	19	0	0	70	42	28	7	34	1	0
Rate		71.4%	28.6%	5.0%	95.0%	0.0%	0.0%		60.0%	40.0%	16.7%	81.0%	2.4%	0.0%
Fall International	0	0					0	0	0	0	0	0	0	0
Rate		0.0%	0.0%	0.0%	0.0%	0.0%	0.0%		0.0%	0.0%	0.0%	0.0%	0.0%	0.0%

* Please refer to the AAA for official USU numbers.

** The title Freshmen refers to first-time to higher education students

Main Campus Domestic Freshmen Profile

January 2, 2012

Fall 2012

	Fall 2012								Fall 2011							
	Total	Complete	Incomplete	Evaluation	Admitted	Denied	Enrolled		Total	Complete	Incomplete	Evaluation	Admitted	Denied	Enrolled	
Total	6795	4381	2414	338	4007	36	0		6922	6176	746	412	5683	81	0	
Rate		64.5%	35.5%	7.7%	91.5%	0.8%	0.0%			89.2%	10.8%	6.7%	92.0%	1.3%	0.0%	

	Residency															
	Total	Complete	Incomplete	Evaluation	Admitted	Denied	Enrolled		Total	Complete	Incomplete	Evaluation	Admitted	Denied	Enrolled	
Resident	3532	3077	455	223	2840	14	0		4431	4149	282	75	4041	33	0	
Rate		87.1%	12.9%	7.2%	92.3%	0.5%	0.0%			93.6%	6.4%	1.8%	97.4%	0.8%	0.0%	
Non-Resident	1514	1294	220	114	1162	18	0		1963	1734	229	59	1631	44	0	
Rate		85.5%	14.5%	8.8%	89.8%	1.4%	0.0%			88.3%	11.7%	3.4%	94.1%	2.5%	0.0%	
Undetermined	1716	8	1708	1	5	2	0		514	286	228	274	10	2	0	
Rate		0.5%	99.5%	12.5%	62.5%	25.0%	0.0%			55.6%	44.4%	95.8%	3.5%	0.7%	0.0%	
Other	33	2	31	0	0	2	0		14	7	7	4	1	2	0	
Rate		6.1%	93.9%	0.0%	0.0%	100.0%	0.0%			50.0%	50.0%	57.1%	14.3%	28.6%	0.0%	

	Ethnicity															
	Total	Complete	Incomplete	Evaluation	Admitted	Denied	Enrolled		Total	Complete	Incomplete	Evaluation	Admitted	Denied	Enrolled	
American Indian/Alaskan Native	20	8	12	1	7	0	0		16	10	6	2	8	0	0	
Rate			60.0%	12.5%	87.5%	0.0%	0.0%			62.5%	37.5%	20.0%	80.0%	0.0%	0.0%	
Asian/Pacific Islander	81	50	31	4	44	2	0		160	134	26	10	122	2	0	
Rate		61.7%	38.3%	8.0%	88.0%	4.0%	0.0%			83.8%	16.3%	7.5%	91.0%	1.5%	0.0%	
Black	66	19	47	1	16	2	0		73	55	18	8	41	6	0	
Rate		28.8%	71.2%	5.3%	84.2%	10.5%	0.0%			75.3%	24.7%	14.5%	74.5%	10.9%	0.0%	
Hispanic	382	180	202	17	159	4	0		389	314	75	25	272	17	0	
Rate		47.1%	52.9%	9.4%	88.3%	2.2%	0.0%			80.7%	19.3%	8.0%	86.6%	5.4%	0.0%	
Multiple Races	185	116	69	19	97	0	0		159	135	24	14	120	1	0	
Rate		62.7%	37.3%	16.4%	83.6%	0.0%	0.0%			84.9%	15.1%	10.4%	88.9%	0.7%	0.0%	
Native Hawaiian	27	10	17	1	9	0	0		30	25	5	2	21	2	0	
Rate		37.0%	63.0%	10.0%	90.0%	0.0%	0.0%			83.3%	16.7%	8.0%	84.0%	8.0%	0.0%	
Unknown	108	61	47	4	56	1	0		167	138	29	8	127	3	0	
Rate		56.5%	43.5%	6.6%	91.8%	1.6%	0.0%			82.6%	17.4%	5.8%	92.0%	2.2%	0.0%	
White	5926	3937	1989	291	3619	27	0		5928	5365	563	343	4972	50	0	
Rate		66.4%	33.6%	7.4%	91.9%	0.7%	0.0%			90.5%	9.5%	6.4%	92.7%	0.9%	0.0%	

	Fall 2012								Fall 2011							
	Total	Complete	Incomplete	Evaluation	Admitted	Denied	Enrolled		Total	Complete	Incomplete	Evaluation	Admitted	Denied	Enrolled	
1/2/2012	6795	4381	2414	338	4007	36	0		6922	6176	746	412	5683	81	0	
12/5/2011	6353	3107	3246	404	2683	20	0		6922	6176	746	412	5683	81	0	
11/7/2011	2695	1438	1257	110	1317	11	0		6922	6176	746	412	5683	81	0	

Freshmen ACT Score Distribution

January 2, 2012

Fall 2012

Fall 2012 Total						
ACT Score	Incomplete	Evaluation	Admitted	Denied	Enrolled	Yield
36	1	1	1	0		0%
35	3	0	19	0		0%
34	9	5	49	0		0%
33	14	4	76	0		0%
32	19	2	121	0		0%
31	37	9	156	2		0%
30	47	17	233	0		0%
29	70	13	242	0		0%
28	78	19	283	0		0%
27	123	24	378	0		0%
26	106	17	329	0		0%
25	111	21	359	2		0%
24	119	22	364	0		0%
23	114	21	335	0		0%
22	135	22	287	0		0%
21	99	19	256	0		0%
20	102	18	206	1		0%
19	89	13	134	1		0%
18	66	3	108	1		0%
17	33	5	45	4		0%
16	31	4	19	11		0%
15	20	2	0	6		0%
14	6	2	0	3		0%
13	5	0	0	0		0%
12	2	0	0	1		0%
11	0	0	0	1		0%
Grand Total	1439	263	4000	33	0	0.0%
Average	23.7	24.6	25.3	16.9	0.0	0.0%

Fall 2011 2/14/2011						
ACT Score	Incomplete	Evaluation	Admitted	Denied	Enrolled	Yield
36						0%
35	1	1	14	0		0%
34	0	0	38	0		0%
33	2	0	81	0		0%
32	1	5	150	0		0%
31	6	7	210	0		0%
30	15	4	248	0		0%
29	8	10	314	0		0%
28	14	17	386	0		0%
27	22	13	422	0		0%
26	26	22	486	0		0%
25	22	28	591	0		0%
24	20	25	549	0		0%
23	38	36	469	0		0%
22	34	37	460	0		0%
21	27	29	411	0		0%
20	28	30	331	1		0%
19	26	25	224	4		0%
18	28	15	201	4		0%
17	6	9	68	4		0%
16	11	10	24	24		0%
15	7	2	0	23		0%
14	2	1	0	6		0%
13	1	0	0	7		0%
12	1	0	0	2		0%
11	0	0	0	1		0%
Grand Total	346	326	5677	76	0	0.0%
Average	22.8	22.9	24.8	15.3	0.0	0.0%

Freshmen Index Distribution

January 2, 2012

Fall 2012

Index	Fall 2012					
	Incomplete	Evaluation	Admitted	Denied	Enrolled	Yield
142						0%
140	0	0	6	0		0%
138	0	0	27	0		0%
136	1	0	44	0		0%
135	1	1	79	0		0%
134	0	0	1	0		0%
133	1	0	106	0		0%
132						0%
131	4	1	121	0		0%
130						0%
129	4	0	168	2		0%
128	2	0	9	0		0%
127	4	0	174	0		0%
126	2	0	231	0		0%
125	0	0	0	0		0%
124	2	0	250	0		0%
123						0%
122	3	1	234	0		0%
121	0	0	1	0		0%
120	8	0	261	2		0%
119	4	0	250	0		0%
118	0	0	1	0		0%
117	7	0	241	0		0%
116	0	0	0	0		0%
115	4	0	214	0		0%
114	0	0	2	0		0%
113	3	0	195	0		0%
112	0	0	6	0		0%
111	3	0	190	0		0%
110	1	0	171	0		0%
109	0	0	0	0		0%
108	4	1	139	0		0%
107						0%
106	1	1	143	0		0%
105	0	0	1	0		0%
104	3	1	127	0		0%
103	1	1	74	0		0%
102	0	0	32	0		0%
101	3	0	102	0		0%
100	0	0	1	0		0%
99	1	0	89	1		0%
98						0%
97	2	0	64	2		0%
96	0	0	4	0		0%
95	4	0	65	0		0%
94	4	1	49	1		0%
93	0	0	0	0		0%
92	0	0	22	2		0%
91						0%
90	1	1	24	1		0%
89						0%
88	1	0	15	3		0%
87	2	0	11	0		0%
86	0	0	0	3		0%
85	1	2	8	3		0%
84						0%
83	0	2	4	2		0%
82						0%
81	0	1	2	2		0%
80						0%
79	0	1	0	3		0%
78	0	1	0	0		0%
77						0%
76	0	0	0	1		0%
75						0%
74	2	0	0	0		0%
73						0%
72	0	0	0	1		0%
71	1	0	0	0		0%
70						0%
69	0	0	0	1		0%
68						0%
67	0	0	0	0		0%
65						0%
64						0%
Grand Total	85	16	3958	30	0	0.0%
Average	112.1	97.9	116.3	90.6	0.0	0.0%

Index	Fall 2011 2/14/2011					
	Incomplete	Evaluation	Admitted	Denied	Enrolled	Yield
142						0%
140	0	0	9	0		0%
138	0	0	17	0		0%
136	0	0	38	0		0%
135	1	0	66	0		0%
134	0	0	1	0		0%
133	2	0	132	0		0%
132						0%
131	1	0	153	0		0%
130						0%
129	1	0	191	0		0%
128	0	0	22	0		0%
127	2	0	188	0		0%
126	0	0	274	0		0%
125						0%
124	6	2	348	0		0%
123	0	0	3	0		0%
122	3	0	295	0		0%
121	1	0	1	0		0%
120	3	0	368	0		0%
119	3	0	341	0		0%
118	0	0	3	0		0%
117	6	0	349	0		0%
116						0%
115	2	2	335	0		0%
114	0	0	2	0		0%
113	6	0	305	0		0%
112	0	1	9	0		0%
111	5	0	275	0		0%
110	8	1	256	0		0%
109						0%
108	5	3	273	0		0%
107						0%
106	4	0	225	0		0%
105	0	1	1	0		0%
104	2	1	196	0		0%
103	6	1	132	0		0%
102	3	0	58	0		0%
101	2	0	171	2		0%
100						0%
99	2	0	146	1		0%
98						0%
97	1	1	116	4		0%
96	0	0	2	1		0%
95	3	0	92	0		0%
94	2	0	62	3		0%
93						0%
92	2	0	52	12		0%
91						0%
90	2	1	38	7		0%
89						0%
88	1	0	45	3		0%
87	1	2	18	0		0%
86	1	0	1	4		0%
85	0	1	22	8		0%
84						0%
83	2	1	10	5		0%
82						0%
81	1	4	3	5		0%
80						0%
79	1	0	3	8		0%
78	1	1	1	5		0%
77						0%
76	0	1	0	2		0%
75						0%
74	0	0	0	1		0%
73						0%
72	0	1	0	0		0%
71	0	0	0	1		0%
70						0%
69	0	0	0	2		0%
67						0%
65	0	1	0	0		0%
64						0%
Grand Total	92	26	5648	74	0	0
Average	108.7	95.5	114.7	86.0	#DIV/0!	0%

Main Campus Domestic Transfer Profile

January 2, 2012

Fall 2012

	Fall 2012								Fall 2011							
	Total	Complete	Incomplete	Evaluation	Admitted	Denied	Enrolled		Total	Complete	Incomplete	Evaluation	Admitted	Denied	Enrolled	
Total	562	276	286	9	266	1	0		1009	630	379	123	503	4	0	
Rate		49.1%	50.9%	3.3%	96.4%	0.4%	0.0%			62.4%	37.6%	19.5%	79.8%	0.6%	0.0%	

	Residency															
	Total	Complete	Incomplete	Evaluation	Admitted	Denied	Enrolled		Total	Complete	Incomplete	Evaluation	Admitted	Denied	Enrolled	
Resident	237	147	90	7	139	1	0		493	359	134	27	330	2	0	
Rate		62.0%	38.0%	4.8%	94.6%	0.7%	0.0%			72.8%	27.2%	7.5%	91.9%	0.6%	0.0%	
Non-Resident	185	129	56	2	127	0	0		302	210	92	36	173	1	0	
Rate		69.7%	30.3%	1.6%	98.4%	0.0%	0.0%			69.5%	30.5%	17.1%	82.4%	0.5%	0.0%	
Undetermined	137	0	137	0	0	0	0		212	61	151	60	0	1	0	
Rate		0.0%	100.0%	0.0%	0.0%	0.0%	0.0%			28.8%	71.2%	98.4%	0.0%	1.6%	0.0%	
Other	3	0	3	0	0	0	0		2	0	2	0	0	0	0	
Rate		0.0%	100.0%	0.0%	0.0%	0.0%	0.0%			0.0%	100.0%	0.0%	0.0%	0.0%	0.0%	

	Ethnicity															
	Total	Complete	Incomplete	Evaluation	Admitted	Denied	Enrolled		Total	Complete	Incomplete	Evaluation	Admitted	Denied	Enrolled	
American Indian/Alaskan Native	5	1	4	0	1	0	0		2	0	2	0	0	0	0	
Rate			80.0%	0.0%	100.0%	0.0%	0.0%			0.0%	100.0%	0.0%	0.0%	0.0%	0.0%	
Asian/Pacific Islander	3	3	0	0	3	0	0		9	6	3	2	3	1	0	
Rate		100.0%	0.0%	0.0%	100.0%	0.0%	0.0%			66.7%	33.3%	33.3%	50.0%	16.7%	0.0%	
Black	7	2	5	0	2	0	0		12	3	9	0	3	0	0	
Rate		28.6%	71.4%	0.0%	100.0%	0.0%	0.0%			25.0%	75.0%	0.0%	100.0%	0.0%	0.0%	
Hispanic	28	13	15	1	12	0	0		55	30	25	6	24	0	0	
Rate		46.4%	53.6%	7.7%	92.3%	0.0%	0.0%			54.5%	45.5%	20.0%	80.0%	0.0%	0.0%	
Multiple Races	15	7	8	0	7	0	0		22	13	9	4	9	0	4	
Rate		46.7%	53.3%	0.0%	100.0%	0.0%	0.0%			59.1%	40.9%	30.8%	69.2%	0.0%	44.4%	
Native Hawaiian	2	1	1	0	1	0	0		9	3	6	1	2	0	4	
Rate		50.0%	50.0%	0.0%	100.0%	0.0%	0.0%			33.3%	66.7%	33.3%	66.7%	0.0%	200.0%	
Unknown	20	9	11	0	9	0	0		55	37	18	8	28	1	0	
Rate		45.0%	55.0%	0.0%	100.0%	0.0%	0.0%			67.3%	32.7%	21.6%	75.7%	2.7%	0.0%	
White	482	240	242	8	231	1	0		845	538	307	102	434	2	0	
Rate		49.8%	50.2%	3.3%	96.3%	0.4%	0.0%			63.7%	36.3%	19.0%	80.7%	0.4%	0.0%	

	Fall 2012								Fall 2011							
	Total	Complete	Incomplete	Evaluation	Admitted	Denied	Enrolled		Total	Complete	Incomplete	Evaluation	Admitted	Denied	Enrolled	
1/2/2012	562	276	286	9	266	1	0		1009	630	379	123	503	4	0	
12/5/2011	451	229	222	21	207	1	0		1009	630	379	123	503	4	0	
11/7/2011	294	147	147	15	131	1	0		1009	630	379	123	503	4	0	

Main Campus Domestic Reapplicant Profile

January 2, 2012

Fall 2012

	Fall 2012								Fall 2011							
	Total	Complete	Incomplete	Evaluation	Admitted	Denied	Enrolled		Total	Complete	Incomplete	Evaluation	Admitted	Denied	Enrolled	
Total	28	20	8	1	19	0	0		70	42	28	7	34	1	0	
Rate		71.4%	28.6%	5.0%	95.0%	0.0%	0.0%			60.0%	40.0%	16.7%	81.0%	2.4%	0.0%	

	Residency															
	Total	Complete	Incomplete	Evaluation	Admitted	Denied	Enrolled	Total	Complete	Incomplete	Evaluation	Admitted	Denied	Enrolled		
Resident	17	16	1	1	15	0	0	42	34	8	5	28	1	0		
Rate		94.1%	5.9%	6.3%	93.8%	0.0%	0.0%		81.0%	19.0%	14.7%	82.4%	2.9%	0.0%		
Non-Resident	5	4	1	0	4	0	0	6	6	0	0	6	0	0		
Rate		80.0%	20.0%	0.0%	100.0%	0.0%	0.0%		100.0%	0.0%	0.0%	100.0%	0.0%	0.0%		
Undetermined	6	0	6	0	0	0	0	21	2	19	2	0	0	0		
Rate		0.0%	100.0%	0.0%	0.0%	0.0%	0.0%		9.5%	90.5%	100.0%	0.0%	0.0%	0.0%		
Other	0	0	0	0	0	0	0	1	0	1	0	0	0	0		
Rate		0.0%	0.0%	0.0%	0.0%	0.0%	0.0%		0.0%	100.0%	0.0%	0.0%	0.0%	0.0%		

	Ethnicity															
	Total	Complete	Incomplete	Evaluation	Admitted	Denied	Enrolled	Total	Complete	Incomplete	Evaluation	Admitted	Denied	Enrolled		
American Indian/Alaskan Native	0	0	0	0	0	0	0	2	2	0	0	2	0	0		
Rate			0.0%	0.0%	0.0%	0.0%	0.0%		100.0%	0.0%	0.0%	100.0%	0.0%	0.0%		
Asian/Pacific Islander	0	0	0	0	0	0	0	0	0	0	0	0	0	0		
Rate		0.0%	0.0%	0.0%	0.0%	0.0%	0.0%		0.0%	0.0%	0.0%	0.0%	0.0%	0.0%		
Black	0	0	0	0	0	0	0	0	0	0	0	0	0	0		
Rate		0.0%	0.0%	0.0%	0.0%	0.0%	0.0%		0.0%	0.0%	0.0%	0.0%	0.0%	0.0%		
Hispanic	2	1	1	0	1	0	0	0	0	0	0	0	0	0		
Rate		50.0%	50.0%	0.0%	100.0%	0.0%	0.0%		0.0%	0.0%	0.0%	0.0%	0.0%	0.0%		
Multiple Races	0	0	0	0	0	0	0	0	0	0	0	0	0	0		
Rate		0.0%	0.0%	0.0%	0.0%	0.0%	0.0%		0.0%	0.0%	0.0%	0.0%	0.0%	0.0%		
Native Hawaiian	0	0	0	0	0	0	0	0	0	0	0	0	0	0		
Rate		0.0%	0.0%	0.0%	0.0%	0.0%	0.0%		0.0%	0.0%	0.0%	0.0%	0.0%	0.0%		
Unknown	4	3	1	0	3	0	0	22	11	11	3	8	0	0		
Rate		75.0%	25.0%	0.0%	100.0%	0.0%	0.0%		50.0%	50.0%	27.3%	72.7%	0.0%	0.0%		
White	22	16	6	1	15	0	0	46	29	17	4	24	1	0		
Rate		72.7%	27.3%	6.3%	93.8%	0.0%	0.0%		63.0%	37.0%	13.8%	82.8%	3.4%	0.0%		

	Fall 2012								Fall 2011							
	Total	Complete	Incomplete	Evaluation	Admitted	Denied	Enrolled		Total	Complete	Incomplete	Evaluation	Admitted	Denied	Enrolled	
1/2/2012	28	20	8	1	19	0	0		70	42	28	7	34	1	0	
12/5/2011	22	16	6	2	14	0	0		70	42	28	7	34	1	0	
11/7/2011	18	16	2	3	13	0	0		70	42	28	7	34	1	0	

Regional Campuses & Distance Education

January 2, 2012

Fall 2012

	Fall 2012 Total							Fall 2011 2/14/2011						
	Total	Complete	Incomplete	Evaluation	Admitted	Denied	Enrolled	Total	Complete	Incomplete	Evaluation	Admitted	Denied	Enrolled
Total	103	52	51	5	47	0	0	210	144	66	20	120	4	0
Rate		50.5%	49.5%	9.6%	90.4%	0.0%	0.0%		68.6%	31.4%	13.9%	83.3%	2.8%	0.0%

	Off Campus Totals													
	Total	Complete	Incomplete	Evaluation	Admitted	Denied	Enrolled	Total	Complete	Incomplete	Evaluation	Admitted	Denied	Enrolled
Freshmen Fall Domestic	51	21	30	3	18	0	0	112	80	32	9	67	4	0
Rate		41.2%	58.8%	14.3%	85.7%	0.0%	0.0%		71.4%	28.6%	11.3%	83.8%	5.0%	0.0%
Freshmen Summer Domestic	10	3	7	2	1	0	0	0	0					
Rate		30.0%	70.0%	66.7%	33.3%	0.0%	0.0%		0.0%	0.0%	0.0%	0.0%	0.0%	0.0%
Transfer Domestic	36	24	12	0	24	0	0	88	57	31	11	46	0	0
Rate		66.7%	33.3%	0.0%	100.0%	0.0%	0.0%		64.8%	35.2%	19.3%	80.7%	0.0%	0.0%
Readmit Domestic	6	0	2	0	4	0	0	10	0	3	0	7	0	0
Rate		0.0%	33.3%	0.0%	0.0%	0.0%	0.0%		0.0%	30.0%	0.0%	0.0%	0.0%	0.0%

	Fall 2012							Fall 2011						
	Total	Complete	Incomplete	Evaluation	Admitted	Denied	Enrolled	Total	Complete	Incomplete	Evaluation	Admitted	Denied	Enrolled
1/2/2012	103	52	51	5	47	0	0	210	144	66	20	120	4	0
12/5/2011	86	38	48	10	28	0	0	210	144	66	20	120	4	0
11/7/2011	44	24	20	3	21	0	0	210	144	66	20	120	4	0

Scholarship Distribution

January 2, 2012

Fall 2012

	Fall 2012 Total	
	Total Offered	Enrolled
Total	978	0
Rate		0.0%

	Scholarships		
	Total Offered	Enrolled	Yield
Alumni Legacy Waiver	40	0	0.0%
MULTIPLE	19	0	0.0%
Non Resident Aggie Achievement	1	0	0.0%
Non Resident Aggie Merit	31	0	0.0%
Non Resident Aggie Scholarship	88	0	0.0%
Non Resident Dean's	60	0	0.0%
Non Resident Presidential	47	0	0.0%
Non Resident Waiver	14	0	0.0%
Resident Achievement	3	0	0.0%
Resident Aggie Merit	11	0	0.0%
Resident Aggie Scholar	258	0	0.0%
Resident Dean's	181	0	0.0%
Resident Presidential Scholar	177	0	0.0%
Transfer Non-Resident Dean	10	0	0.0%
Transfer Non-Resident Presiden	4	0	0.0%
Transfer Resident Aggie Schola	12	0	0.0%
Transfer Resident Dean	18	0	0.0%
Transfer Resident Presidential	4	0	0.0%

	Fall 2011 Total	
	Total Offered	Enrolled
Total	2897	0
Rate		0.0%

	Scholarships		
	Total Offered	Enrolled	Yield
100 Mile Radius	97		0.0%
Alumni Legacy Dean's	1		0.0%
Alumni Legacy Waiver	105		0.0%
ISU/USU	110		0.0%
MULTIPLE	43		0.0%
Non Resident Aggie Achievement	52		0.0%
Non Resident Aggie Merit	63		0.0%
Non Resident Aggie Scholarship	156		0.0%
Non Resident Dean's	64		0.0%
Non Resident Presidential	55		0.0%
Non Resident Waiver	35		0.0%
Resident Achievement	694		0.0%
Resident Aggie Merit	434		0.0%
Resident Aggie Scholar	556		0.0%
Resident Dean's	234		0.0%
Resident Presidential Scholar	186		0.0%
Transfer ISU/USU	2		0.0%
USU/Wyoming Scholarship	10		0.0%

	Fall 2012		Fall 2011	
	Total Offered	Enrolled	Total Offered	Enrolled
1/2/2012	978	0	2897	0
12/5/2011	60	0	2897	0
11/7/2011	62	0	2897	0

Application Profile Summary

January 2, 2012

Fall 2012

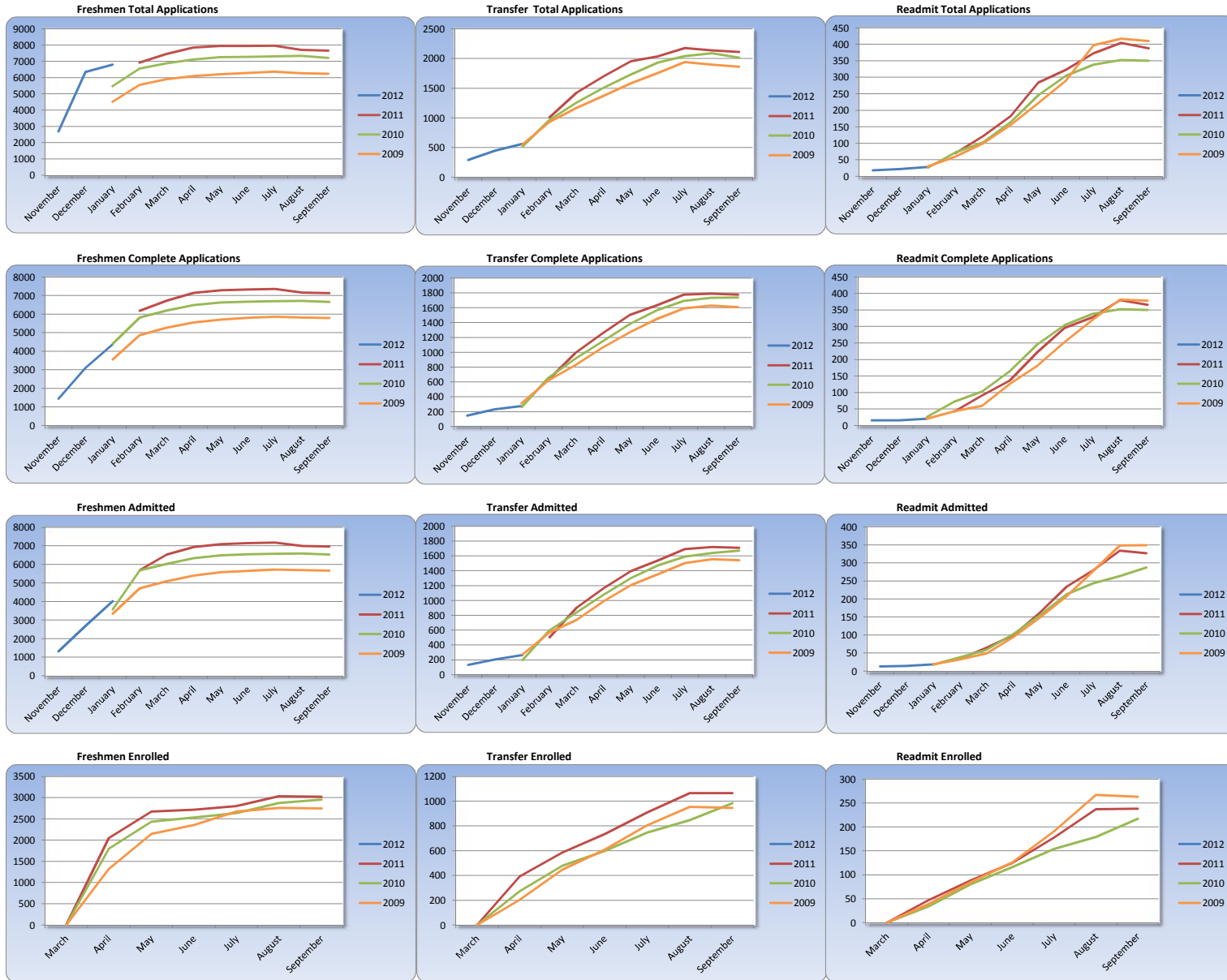
Freshmen										
	Total	Complete	Incomplete	Evaluation	Admitted	Denied	Non-Resident Complete	Non-Resident Admitted	Enrolled	Enrollment Yield
2012 (01/02/11)	6795	4381	2414	338	4007	36	1294	1162	0	0.0%
As of 12/05/11	+442	+1274	-832	-66	+1324	+16	+392	+388	0	0.0
2011 (Third Week)	7648	7124	524	14	6955	155	2127	2036	3020	43.4%
2010 (Third Week)	7212	6658	554	3	6533	122	1871	1821	2957	45.3%
2009 (Third Week)	6234	5789	445	4	5667	118	1600	1542	2744	48.4%
2008 (Third Week)	5752	5389	363	2	5277	110	1485	1443	2697	51.1%
2007 (Third Week)	5887	5496	391	3	5372	121	1578	1532	2737	50.9%

Transfer										
	Total	Complete	Incomplete	Evaluation	Admitted	Denied	Non-Resident Complete	Non-Resident Admitted	Enrolled	Enrollment Yield
2012 (01/02/11)	562	276	286	9	266	1	129	127	0	0.0%
As of 12/05/11	+111	+47	+64	-12	+59	0	+23	+31	0	0.0
2011 (Third Week)	2108	1774	334	4	1709	61	583	555	1065	62.3%
2010 (Third Week)	2013	1738	275	6	1669	63	524	494	984	59.0%
2009 (Third Week)	1862	1607	255	9	1540	58	465	440	946	61.4%
2008 (Third Week)	1799	1606	193	6	1562	38	516	491	996	63.8%
2007 (Third Week)	1798	1552	246	5	1496	51	472	445	970	64.8%

Reapplicant										
	Total	Complete	Incomplete	Evaluation	Admitted	Denied	Non-Resident Complete	Non-Resident Admitted	Enrolled	Enrollment Yield
2012 (01/02/11)	28	20	8	1	19	0	4	4	0	0.0%
As of 12/05/11	+6	+4	+2	-1	+5	0	+1	+1	0	0.0
2011 (Third Week)	388	366	22	7	327	32	22	20	238	72.8%
2010 (Third Week)	350	316	34	9	287	20	27	22	217	75.6%
2009 (Third Week)	410	378	32	9	349	20	36	29	263	75.4%
2008 (Third Week)	454	420	34	10	393	17	28	28	302	76.8%

Main Campus Domestic Trend Comparison

January 2, 2012
Fall 2012



In-state High School Market Profile

January 2, 2012

Fall 2012

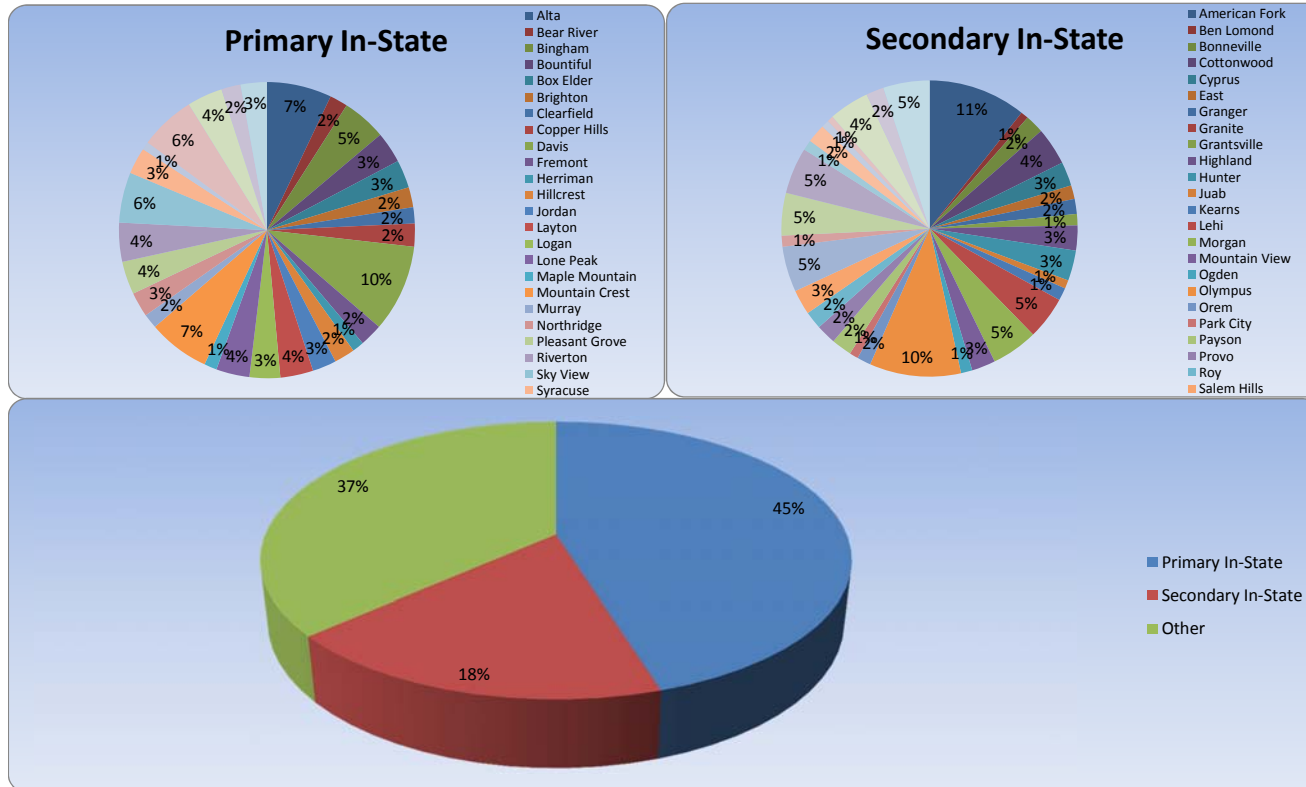
	Primary In-State															
	Fall 2012								Fall 2011							
	Total	Complete	Incomplete	Evaluation	Admitted	Denied	Enrolled		Total	Complete	Incomplete	Evaluation	Admitted	Denied	Enrolled	
Alta	204	141	63	12	128	1			144	132	12	7	125	0		
Bear River	63	39	24	3	36	0			61	59	2	4	55	0		
Bingham	129	93	36	5	87	1			131	118	13	5	113	0		
Bountiful	93	67	26	4	62	1			108	99	9	4	95	0		
Box Elder	89	60	29	4	55	1			126	121	5	7	114	0		
Brighton	75	42	33	2	40	0			70	65	5	2	63	0		
Clearfield	45	33	12	1	32	0			46	43	3	2	40	1		
Copper Hills	78	49	29	4	45	0			63	57	6	3	52	2		
Davis	232	179	53	6	173	0			245	231	14	14	217	0		
Fremont	73	48	25	3	45	0			53	47	6	3	44	0		
Herriman	39	26	13	3	23	0										
Hillcrest	57	43	14	2	41	0			60	52	8	1	51	0		
Jordan	68	51	17	4	47	0			83	74	9	4	70	0		
Layton	99	67	32	2	65	0			105	100	5	5	95	0		
Logan	101	69	32	6	61	2			151	145	6	7	137	1		
Lone Peak	139	73	66	6	66	1			157	151	6	15	134	2		
Maple Mountain	58	29	29	4	25	0			46	38	8	3	35	0		
Mountain Crest	169	130	39	7	122	1			172	151	21	12	139	0		
Murray	65	33	32	4	29	0			48	43	5	0	43	0		
Northridge	71	52	19	2	49	1			88	79	9	3	76	0		
Pleasant Grove	109	73	36	8	65	0			109	98	11	6	90	2		
Riverton	114	77	37	0	77	0			121	112	9	8	104	0		
Sky View	150	109	41	7	100	2			198	180	18	16	163	1		
Syracuse	79	52	27	0	52	0			79	71	8	5	64	2		
Taylorsville	31	16	15	0	16	0			28	24	4	1	23	0		
Viewmont	175	116	59	6	110	0			139	134	5	2	131	1		
Weber	112	77	35	7	70	0			128	112	16	2	109	1		
West Jordan	55	40	15	2	38	0			58	52	6	3	48	1		
Woods Crossing	83	59	24	7	52	0			98	90	8	2	88	0		
Total	2855	1943	912	121	1811	11	0		2915	2678	237	146	2518	14	0	

	Secondary In-State															
	Fall 2012								Fall 2011							
	Total	Complete	Incomplete	Evaluation	Admitted	Denied	Enrolled		Total	Complete	Incomplete	Evaluation	Admitted	Denied	Enrolled	
American Fork	140	86	54	8	78	0			112	107	5	2	105	0		
Ben Lomond	19	8	11	2	6	0			10	8	2	2	6	0		
Bonneville	27	18	9	3	15	0			35	33	2	1	32	0		
Cottonwood	55	34	21	3	30	1			50	48	2	4	44	0		
Cyprus	27	19	8	0	19	0			41	34	7	1	32	1		
East	24	12	12	1	11	0			34	28	6	2	25	1		
Granger	15	12	3	0	12	0			7	5	2	0	4	1		
Granite	0	0							0	0						
Grantsville	19	11	8	2	9	0			17	16	1	0	16	0		
Highland	37	21	16	1	20	0			29	25	4	1	23	1		
Hunter	36	26	10	2	24	0			49	45	4	1	43	1		
Juab	9	7	2	0	7	0			9	8	1	0	8	0		
Kearns	27	11	16	1	10	0			32	25	7	0	24	1		
Lehi	75	41	34	7	34	0			63	59	4	7	52	0		
Morgan	47	39	8	1	37	1			50	48	2	0	48	0		
Mountain View	39	24	15	4	19	1			56	54	2	2	52	0		
Ogden	27	10	17	1	9	0			27	20	7	1	17	2		
Olympus	123	80	43	6	73	1			94	84	10	9	73	2		
Orem	28	13	15	2	11	0			41	38	3	5	33	0		
Park City	14	8	6	1	7	0										
Payson	26	16	10	0	16	0			28	28	0	1	27	0		
Provo	31	16	15	0	16	0			24	19	5	3	16	0		
Roy	23	14	9	0	14	0			43	40	3	4	36	0		
Salem Hills	47	21	26	1	20	0			39	34	5	1	33	0		
Skyline	68	38	30	2	36	0			61	56	5	6	50	0		
Spanish Fork	22	10	12	0	9	1			35	33	2	2	30	1		
Springville	59	40	19	6	34	0			53	48	5	2	46	0		
Timpanogos	66	39	27	2	37	0			53	51	2	3	48	0		
Timpview	22	9	13	1	8	0			33	29	4	3	26	0		
Tooele	27	15	12	0	15	0			26	22	4	3	18	1		
Uintah	15	8	7	2	6	0			25	22	3	3	19	0		
Union	15	7	8	2	5	0			17	16	1	0	15	1		
Wasatch	52	34	18	2	32	0			51	50	1	1	48	1		
West	24	14	10	0	14	0			22	18	4	0	18	0		
West Lake	62	41	21	4	37	0			27	22	5	1	21	0		
Total	1347	802	545	67	730	5	0		1293	1173	120	71	1088	14	0	

High School Market Distribution

January 2, 2012

Fall 2012



High School State Profile

January 2, 2012

Fall 2012

	Fall 2012							Fall 2011						
	Total	Complete	Incomplete	Evaluation	Admitted	Denied	Enrolled	Total	Complete	Incomplete	Evaluation	Admitted	Denied	Enrolled
Alabama	6	6	0	0	6	0		3	3	0	0	3	0	
Alaska	14	7	7	0	7	0		13	11	2	2	9	0	
Arizona	82	44	38	3	41	0		82	72	10	2	68	2	
Arkansas	1	1	0	0	1	0		6	6	0	0	6	0	
California	202	103	99	13	88	2		175	142	33	12	119	11	
Colorado	140	102	38	2	99	1		132	120	12	5	114	1	
Connecticut	10	5	5	2	3	0		7	7	0	1	6	0	
Delaware	1	0	1	0	0	0								
Florida	11	7	4	0	7	0		13	9	4	4	4	1	
Georgia	8	5	3	2	3	0		10	10	0	1	8	1	
Hawaii	25	14	11	0	14	0		23	16	7	4	10	2	
Idaho	723	500	223	37	461	2		787	699	88	57	634	8	
Illinois	52	44	8	4	39	1		51	41	10	0	39	2	
Indiana	12	7	5	1	6	0		12	10	2	1	9	0	
Iowa	8	7	1	2	5	0		7	7	0	1	6	0	
Kansas	7	5	2	0	5	0		5	4	1	0	4	0	
Kentucky	3	2	1	1	1	0		4	4	0	0	4	0	
Louisiana	1	0	1	0	0	0								
Maine	1	0	1	0	0	0		3	3	0	0	2	1	
Maryland	9	6	3	2	3	1		15	10	5	1	9	0	
Massachusetts	13	6	7	0	6	0		16	16	0	2	13	1	
Michigan	18	11	7	0	10	1		16	14	2	0	14	0	
Minnesota	14	11	3	2	9	0		10	10	0	1	9	0	
Mississippi	1	1	0	0	1	0		1	1	0	0	1	0	
Missouri	14	10	4	1	8	1		13	13	0	0	13	0	
Montana	24	10	14	0	10	0		20	18	2	2	16	0	
Nebraska	10	8	2	2	6	0		8	5	3	0	5	0	
Nevada	123	63	60	11	52	0		144	118	26	11	106	1	
New Hampshire	4	1	3	0	1	0		9	8	1	1	7	0	
New Jersey	13	8	5	1	7	0		8	5	3	1	3	1	
New Mexico	14	7	7	0	6	1		10	4	6	2	2	0	
New York	12	8	4	3	5	0		27	22	5	4	18	0	
North Carolina	11	7	4	1	6	0		9	8	1	1	7	0	
North Dakota								1	1	0	0	1	0	
Ohio	11	10	1	0	10	0		18	16	2	2	14	0	
Oklahoma	6	2	4	1	1	0		3	3	0	0	3	0	
Oregon	52	31	21	1	30	0		41	35	6	4	28	3	
Pennsylvania	18	12	6	2	9	1		22	20	2	4	14	2	
Rhode Island	1	0	1	0	0	0								
South Carolina	2	0	2	0	0	0		5	3	2	1	2	0	
South Dakota	3	2	1	0	2	0		5	5	0	0	5	0	
Tennessee	7	5	2	0	5	0		7	6	1	0	6	0	
Texas	58	42	16	5	36	1		50	44	6	3	40	1	
Vermont	7	3	4	1	2	0								
Virginia	15	7	8	1	6	0		19	16	3	3	13	0	
Washington	75	44	31	5	36	3		72	57	15	8	48	1	
West Virginia	0	0	0	0	0	0		1	1	0	1	0	0	
Wisconsin	15	10	5	1	9	0		13	11	2	1	10	0	
Wyoming	97	67	30	7	59	1		119	107	12	4	100	3	
Total	1954	1251	703	114	1121	16	0	2015	1741	274	147	1552	42	0

Out of State High School Regions

January 2, 2012

Fall 2012

	Alaska								Fall 2011							
	Fall 2012				Fall 2011				Fall 2012				Fall 2011			
	Total	Complete	Incomplete	Evaluation	Admitted	Denied	Enrolled		Total	Complete	Incomplete	Evaluation	Admitted	Denied	Enrolled	
ANCHORAGE	6	2	4	0	2	0			3	3	0	0	3	0		
Total	6	2	4	0	2	0	0	0	3	3	0	0	3	0	0	

	Arizona								Fall 2011							
	Fall 2012				Fall 2011				Fall 2012				Fall 2011			
	Total	Complete	Incomplete	Evaluation	Admitted	Denied	Enrolled		Total	Complete	Incomplete	Evaluation	Admitted	Denied	Enrolled	
FLAGSTAFF/PRESCOTT	7	3	4	0	3	0			4	3	1	0	3	0		
PHOENIX (GILBERT/MESA)	42	23	19	2	21	0			47	42	5	1	41	0		
PHOENIX (GLENDALE/SCOTTSDALE)	14	7	7	0	7	0			20	16	4	1	14	1		
TUCSON	9	7	2	1	6	0			2	2	0	0	2	0		
Total	72	40	32	3	37	0	0	0	73	63	10	2	60	1	0	

	California								Fall 2011							
	Fall 2012				Fall 2011				Fall 2012				Fall 2011			
	Total	Complete	Incomplete	Evaluation	Admitted	Denied	Enrolled		Total	Complete	Incomplete	Evaluation	Admitted	Denied	Enrolled	
BAY AREA	17	13	4	3	9	1			14	12	2	0	11	1		
FRESNO	6	3	3	1	2	0			6	6	0	1	5	0		
LA	13	2	11	0	2	0			22	18	4	2	14	2		
LA EAST	12	7	5	1	6	0			14	10	4	0	9	1		
ORANGE COUNTY	46	17	29	2	15	0			29	22	7	4	18	0		
SACRAMENTO	15	10	5	0	10	0			22	18	4	1	15	2		
SAN DIEGO	21	12	9	1	11	0			23	21	2	1	19	1		
Total	130	64	66	8	55	1	0	0	130	107	23	9	91	7	0	

	Colorado								Fall 2011							
	Fall 2012				Fall 2011				Fall 2012				Fall 2011			
	Total	Complete	Incomplete	Evaluation	Admitted	Denied	Enrolled		Total	Complete	Incomplete	Evaluation	Admitted	Denied	Enrolled	
COLORADO SPRINGS	22	16	6	0	16	0			24	24	0	1	23	0		
DENVER	69	50	19	0	49	1			61	55	6	1	54	0		
FORT COLLINS	17	16	1	1	15	0			24	21	3	0	21	0		
GRAND JUNCTION	10	8	2	0	8	0			7	6	1	0	5	1		
Total	118	90	28	1	88	1	0	0	116	106	10	2	103	1	0	

	Illinois								Fall 2011							
	Fall 2012				Fall 2011				Fall 2012				Fall 2011			
	Total	Complete	Incomplete	Evaluation	Admitted	Denied	Enrolled		Total	Complete	Incomplete	Evaluation	Admitted	Denied	Enrolled	
LIBERTYVILLE	11	9	2	2	7	0			11	7	4	0	7	0		
NAPERVILLE	15	15	0	1	14	0			15	11	4	0	10	1		
Total	26	24	2	3	21	0	0	0	26	18	8	0	17	1	0	

	Montana								Fall 2011							
	Fall 2012				Fall 2011				Fall 2012				Fall 2011			
	Total	Complete	Incomplete	Evaluation	Admitted	Denied	Enrolled		Total	Complete	Incomplete	Evaluation	Admitted	Denied	Enrolled	
BILLINGS/BOSEMAN	4	1	3	0	1	0			4	4	0	1	3	0		
WEST	14	7	7	0	7	0			11	10	1	1	9	0		
Total	18	8	10	0	8	0	0	0	15	14	1	2	12	0	0	

	Nevada								Fall 2011							
	Fall 2012				Fall 2011				Fall 2012				Fall 2011			
	Total	Complete	Incomplete	Evaluation	Admitted	Denied	Enrolled		Total	Complete	Incomplete	Evaluation	Admitted	Denied	Enrolled	
LAS VEGAS	87	44	43	7	37	0			102	81	21	7	73	1		
MESQUITE/MOAPA	9	5	4	3	2	0			14	12	2	1	11	0		
RENO	9	4	5	1	3	0			12	11	1	1	10	0		
Total	105	53	52	11	42	0	0	0	128	104	24	9	94	1	0	

	Oregon								Fall 2011							
	Fall 2012				Fall 2011				Fall 2012				Fall 2011			
	Total	Complete	Incomplete	Evaluation	Admitted	Denied	Enrolled		Total	Complete	Incomplete	Evaluation	Admitted	Denied	Enrolled	
EUGENE	4	2	2	0	2	0			5	5	0	0	4	1		
OR/ID BORDER	4	1	3	0	1	0			19	16	3	3	12	1		
PORTLAND	22	14	8	1	13	0			3	3	0	1	1	1		
SALEM/CORVALLIS	3	2	1	0	2	0			3	3	0	1	1	1		
Total	33	19	14	1	18	0	0	0	27	24	3	4	17	3	0	

	Texas								Fall 2011							
	Fall 2012				Fall 2011				Fall 2012				Fall 2011			
	Total	Complete	Incomplete	Evaluation	Admitted	Denied	Enrolled		Total	Complete	Incomplete	Evaluation	Admitted	Denied	Enrolled	
DALLAS (GRAPEVINE/FLOWER MOUND)	7	5	2	0	4	1			7	7	0	0	7	0		
DALLAS (PLANO/MCKINNEY)	2	1	1	0	1	0			1	1	0	0	1	0		
HOUSTON NORTH	7	4	3	1	3	0			3	1	2	0	0	1		
Total	16	10	6	1	8	1	0	0	11	9	2	0	8	1	0	

	Washington								Fall 2011							
	Fall 2012				Fall 2011				Fall 2012				Fall 2011			
	Total	Complete	Incomplete	Evaluation	Admitted	Denied	Enrolled		Total	Complete	Incomplete	Evaluation	Admitted	Denied	Enrolled	
OLYMPIA/TACOMA	11	4	7	1	1	2			12	9	3	3	6	0		
SEATTLE	24	16	8	1	15	0			18	16	2	0	15	1		
SPOKANE	5	1	4	0	1	0			8	7	1	0	7	0		
TRI CITIES	20	12	8	3	9	0			11	8	3	1	7	0		
VANCOUVER	5	3	2	0	3	0			9	5	4	1	4	0		
Total	65	36	29	5	29	2	0	0	58	45	13	5	39	1	0	

Transfer Market Profile

January 2, 2012

Fall 2012

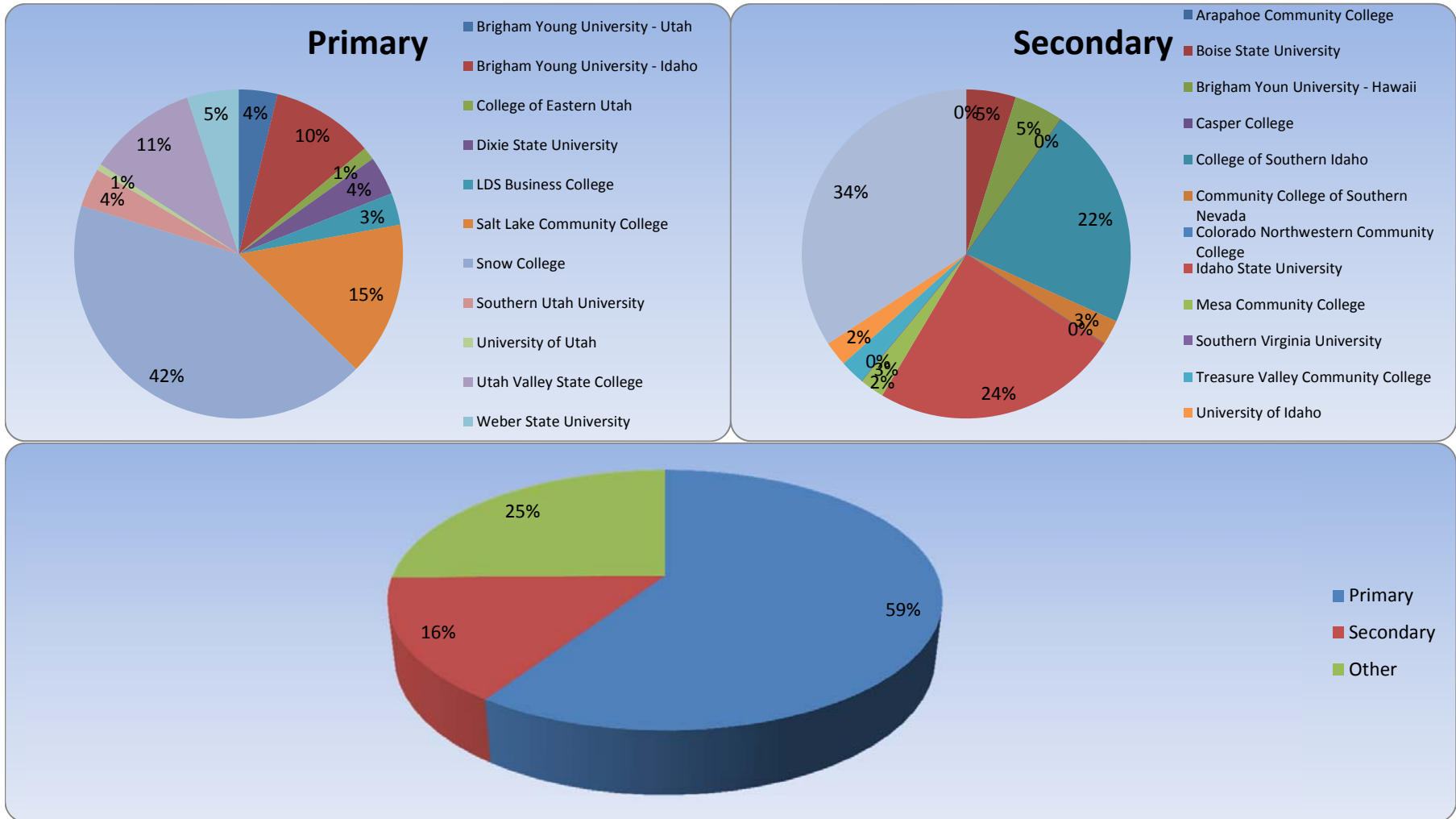
	Primary													
	Fall 2012							Fall 2011						
	Total	Complete	Incomplete	Evaluation	Admitted	Denied	Enrolled	Total	Complete	Incomplete	Evaluation	Admitted	Denied	Enrolled
Brigham Young University - Utah	10	6	4	0	6	0		26	21	5	4	17	0	
Brigham Young University - Idaho	21	16	5	0	16	0		46	34	12	11	23	0	
College of Eastern Utah	8	2	6	0	2	0		33	26	7	2	24	0	
Dixie State University	17	7	10	1	6	0		45	23	22	2	21	0	
LDS Business College	10	5	5	0	5	0		36	20	16	3	17	0	
Salt Lake Community College	51	27	24	2	24	1		86	51	35	5	46	0	
Snow College	143	68	75	1	67	0		209	140	69	16	124	0	
Southern Utah University	21	7	14	1	6	0		35	22	13	7	15	0	
University of Utah	6	1	5	0	1	0		16	8	8	2	6	0	
Utah Valley State College	37	19	18	2	17	0		68	53	15	13	39	1	
Weber State University	18	8	10	0	8	0		54	41	13	13	27	1	
Total	342	166	176	7	158	1	0	654	439	215	78	359	2	0

	Secondary													
	Fall 2012							Fall 2011						
	Total	Complete	Incomplete	Evaluation	Admitted	Denied	Enrolled	Total	Complete	Incomplete	Evaluation	Admitted	Denied	Enrolled
Arapahoe Community College	1	0	1	0	0	0		1	1	0	1	0	0	
Boise State University	2	2	0	0	2	0		6	5	1	2	3	0	
Brigham Young University - Hawaii	3	2	1	0	2	0		7	5	2	2	3	0	
Casper College	2	0	2	0	0	0		3	3	0	0	3	0	
College of Southern Idaho	17	10	7	1	9	0		21	14	7	1	13	0	
Community College of Southern Nevada	2	1	1	0	1	0		1	1	0	0	1	0	
Colorado Northwestern Community College	0	0	0	0	0	0		1	1	0	1	0	0	
Idaho State University	13	10	3	0	10	0		17	12	5	3	9	0	
Mesa Community College	1	1	0	0	1	0		1	1	0	1	0	0	
Southern Virginia University	0	0	0	0	0	0		5	2	3	2	0	0	
Treasure Valley Community College	1	1	0	0	1	0		0	0					
University of Idaho	2	1	1	0	1	0		1	1	0	0	1	0	
Western Wyoming Community College	24	14	10	0	14	0		32	15	17	4	11	0	
Total	68	42	26	1	41	0	0	96	61	35	17	44	0	0

Transfer Market Distribution

January 2, 2012

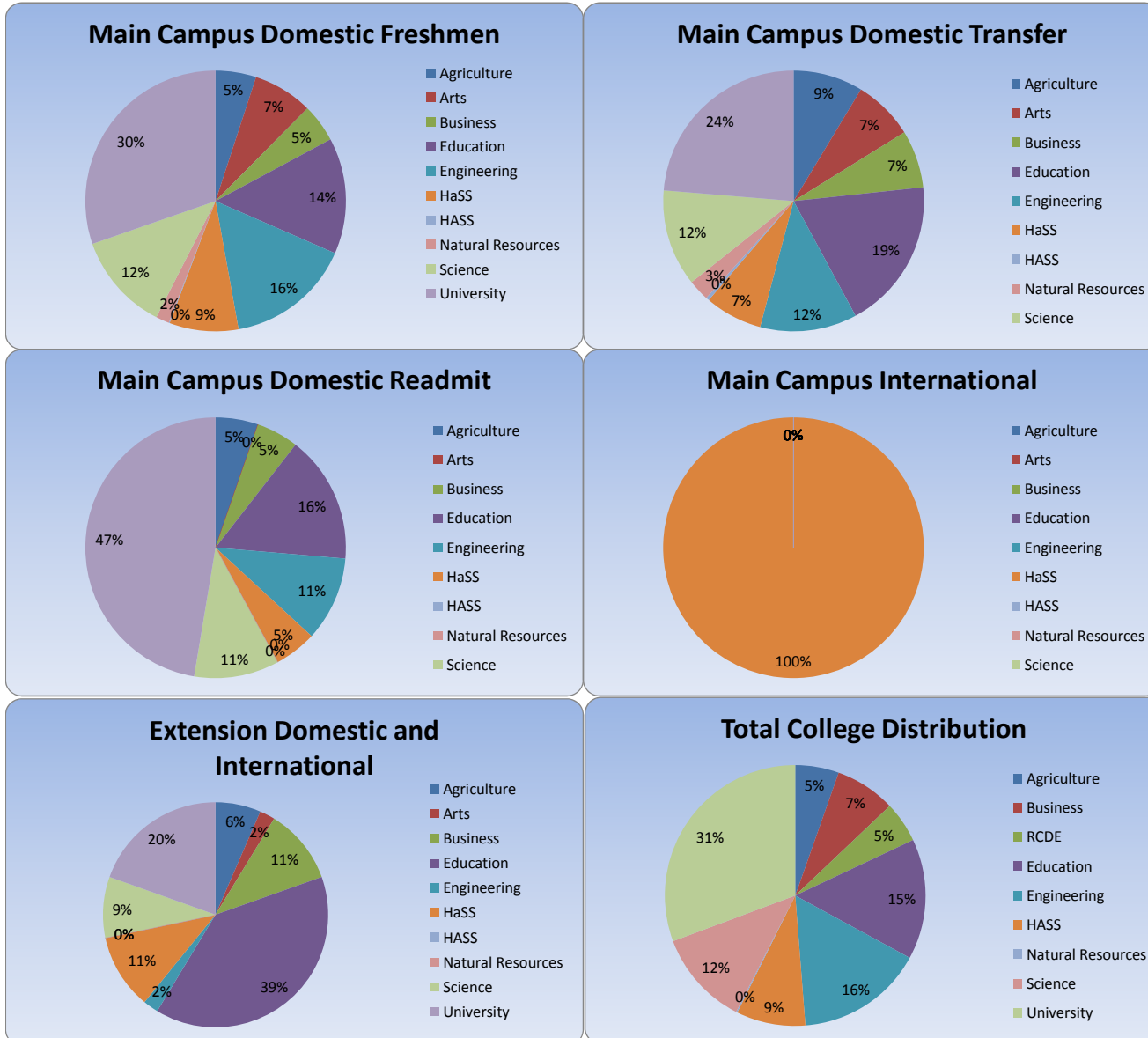
Fall 2012



College Profile
January 2, 2012
Fall 2012

		Fall 2012 Total							Fall 2011 2/14/2011						
		Total	Complete	Incomplete	Evaluation	Admitted	Denied	Enrolled	Total	Complete	Incomplete	Evaluation	Admitted	Denied	Enrolled
Main Campus Domestic Freshmen	Agriculture	345	221	124	18	201	2		338	304	34	27	274	3	
	Arts	498	326	172	28	297	1		541	479	62	31	447	1	
	Business	513	223	290	34	189	0		352	272	80	44	227	1	
	Education	996	633	363	55	577	1		1053	949	104	64	885	0	
	Engineering	988	669	319	39	626	4		949	858	91	47	804	7	
	HaSS	595	371	224	26	343	2		592	514	78	41	473	0	
	HASS	5	5	0	0	5	0		7	6	1	0	6	0	
	Natural Resources	107	70	37	4	66	0		93	80	13	3	77	0	
	Science	822	530	292	40	487	3		828	748	80	45	701	2	
	University	1926	1333	593	94	1216	23		2169	1966	203	110	1789	67	
Total	6795	4381	2414	338	4007	36	0	6922	6176	746	412	5683	81	0	
Main Campus Domestic Transfer	Agriculture	44	24	20	0	23	1		86	56	30	15	41	0	
	Arts	53	20	33	0	20	0		84	54	30	10	44	0	
	Business	45	20	25	1	19	0		61	31	30	7	24	0	
	Education	103	51	52	1	50	0		213	126	87	17	109	0	
	Engineering	71	34	37	2	32	0		115	80	35	27	51	2	
	HaSS	60	19	41	0	19	0		126	74	52	14	60	0	
	HASS	1	1	0	0	1	0		4	2	2	0	2	0	
	Natural Resources	20	8	12	1	7	0		24	13	11	5	8	0	
	Science	57	34	23	2	32	0		119	78	41	12	66	0	
	University	108	65	43	2	63	0		177	116	61	16	98	2	
Total	562	276	286	9	266	1	0	1009	630	379	123	503	4	0	
Main Campus Domestic Readmit	Agriculture	1	1	0	0	1	0		2	1	1	0	1	0	
	Arts	1	1	0	1	0	0		2	1	1	0	1	0	
	Business	1	1	0	0	1	0		6	2	4	0	2	0	
	Education	4	3	1	0	3	0		9	3	6	0	3	0	
	Engineering	3	2	1	0	2	0		5	3	2	1	2	0	
	HaSS	3	1	2	0	1	0		7	3	4	0	3	0	
	HASS	0	0	0	0	0	0		1	1	0	0	1	0	
	Natural Resources	0	0	0	0	0	0		2	1	1	1	0	0	
	Science	2	2	0	0	2	0		5	5	0	1	4	0	
	University	13	9	4	0	9	0		31	22	9	4	17	1	
Total	28	20	8	1	19	0	0	70	42	28	7	34	1	0	
Main Campus International	Agriculture	1	0	1	0	0	0		2	1	1	1	0	0	
	Arts	0	0	0	0	0	0		1	0	1	0	0	0	
	Business	3	2	1	2	0	0		21	19	2	17	2	0	
	Education	1	1	0	1	0	0		4	3	1	3	0	0	
	Engineering	6	5	1	5	0	0		13	12	1	12	0	0	
	HaSS	3	3	0	0	3	0		8	8	0	2	6	0	
	HASS	0	0	0	0	0	0		0	0					
	Natural Resources	0	0	0	0	0	0		0	0					
	Science	1	0	1	0	0	0		15	9	6	7	2	0	
	University	0	0	0	0	0	0		1	1	0	0	1	0	
Total	15	11	4	8	3	0	0	65	53	12	42	11	0	0	
Extension Domestic and International	Agriculture	4	3	1	0	3	0		5	4	1	1	3	0	
	Arts	4	1	3	0	1	0		6	3	3	0	3	0	
	Business	10	5	5	0	5	0		14	10	4	3	7	0	
	Education	29	18	11	0	18	0		57	37	20	6	31	0	
	Engineering	7	3	4	2	1	0		11	4	7	2	2	0	
	HaSS	7	5	2	0	5	0		17	10	7	2	8	0	
	HASS	0	0	0	0	0	0		0	0					
	Natural Resources	0	0	0	0	0	0		5	2	3	1	1	0	
	Science	11	4	7	0	4	0		15	9	6	1	7	1	
	University	21	10	11	1	9	0		82	67	15	4	60	3	
Total	93	49	44	3	46	0	0	212	146	66	20	122	4	0	

College Distribution
 January 2, 2012
 Fall 2012



College of Agriculture
January 2, 2012
Fall 2012

	Fall 2011 Domestic and International Applicants at any USU Campus						
	Total						
	Total	Complete	Incomplete	Evaluation	Admitted	Denied	Enrolled
ACAJ_BS	6	4	2	1	3	0	
ADVS_ANDS_BS	57	36	21	3	32	1	
ADVS_BIOT_BS	6	3	3	0	3	0	
ADVS_BS	16	10	6	0	9	1	
ADVS_BVET_BS	74	42	32	3	39	0	
ADVS_EQSM_BS	34	18	16	2	16	0	
AGBU_BS	25	17	8	1	16	0	
AGEC_BS	2	2	0	0	2	0	
AGED_BS	16	8	8	1	7	0	
AGMT_AAS	1	1	0	0	1	0	
ASTE_BS	9	6	3	1	5	0	
ESWS_BS	6	3	3	0	3	0	
FCSE_BS	13	8	5	0	8	0	
GEAG_PPRU	15	12	3	1	11	0	
INAB_BA	2	1	1	0	1	0	
LAAR_BLA	20	13	7	0	13	0	
NAFS_BS	1	0	1	0	0	0	
NAFS_DTCS_BS	1	1	0	0	0	1	
NDFS_BS	4	3	1	0	3	0	
NDFS_DTCS_BS	34	24	10	4	20	0	
NDFS_FDSC_BS	7	5	2	0	5	0	
NDFS_FTMG_BS	1	1	0	0	1	0	
NDFS_NTSC_BS	33	21	12	1	20	0	
ORHO_AAS	1	0	1	0	0	0	
ORHX_CERU	1	1	0	0	1	0	
PLSC_BS	7	7	0	0	7	0	
RLDC_BS	3	2	1	0	2	0	

Caine College of the Arts

January 2, 2012

Fall 2012

Fall 2011 Domestic and International Applicants at any USU Campus							
Total							
	Total	Complete	Incomplete	Evaluation	Admitted	Denied	Enrolled
ARED_DRAWBFA	1	0	1	0	0	0	
ART_ARED_BFA	1	0	1	0	0	0	
ART_BS	1	0	1	0	0	0	
ART_PHOT_BFA	1	0	1	0	0	0	
ART_PPRU	165	104	61	11	92	1	
INDE_PPRU	87	63	24	2	61	0	
MUSC_PPRU	2	2	0	0	2	0	
MUSCBANDPPRU	1	0	1	0	0	0	
MUSCBANDUNDE	30	19	11	4	15	0	
MUSCGUITPPRU	2	0	2	0	0	0	
MUSCGUITUNDE	9	5	4	1	4	0	
MUSCPIANUNDE	25	17	8	0	17	0	
MUSCSTRIUNDE	35	21	14	1	20	0	
MUSCUNDE	11	10	1	0	10	0	
MUSCVOCAUNDE	58	32	26	3	29	0	
MUTH_PPRU	4	3	1	1	2	0	
MUTH_UNDE	72	47	25	4	43	0	
THAR_PPRU	51	25	26	2	23	0	

Jon M. Huntsman School of Business
January 2, 2012
Fall 2012

Fall 2011 Domestic and International Applicants at any USU Campus							
Total							
	Total	Complete	Incomplete	Evaluation	Admitted	Denied	Enrolled
ACCT_AC_BS	1	0	1	0	0	0	
ACCT_BA	36	13	23	4	9	0	
ACCT_BS	47	28	19	2	26	0	
BUAD_BA	39	18	21	3	15	0	
BUAD_BS	42	20	22	2	18	0	
BUSI_BA	46	18	28	3	15	0	
BUSI_BS	66	33	33	2	31	0	
ECON_BU_BA	16	8	8	0	8	0	
ECON_BU_BS	23	11	12	1	10	0	
ENTR_BA	27	9	18	4	5	0	
ENTR_BS	17	5	12	1	4	0	
FINA_BA	17	5	12	0	5	0	
FINA_BS	27	12	15	2	10	0	
HRMA_BA	4	1	3	0	1	0	
HRMA_BS	11	7	4	0	7	0	
INBU_BA	14	7	7	3	4	0	
INBU_BS	26	10	16	1	9	0	
MARK_BA	54	22	32	6	16	0	
MARK_BS	28	14	14	0	14	0	
MISY_BA	11	2	9	2	0	0	
MISY_BS	12	5	7	1	4	0	
OPMA_BA	4	0	4	0	0	0	
OPMA_BS	4	3	1	0	3	0	

Emma Eccles Jones College of Education and Human Services
January 2, 2012
Fall 2012

	Fall 2011 Domestic and International Applicants at any USU Campus						
	Total						
	Total	Complete	Incomplete	Evaluation	Admitted	Denied	Enrolled
CDDE_2BS	11	6	5	0	6	0	
CDDE_BA	17	9	8	1	8	0	
CDDE_BS	22	16	6	1	15	0	
CDDE_ONLI_BS	3	2	1	0	2	0	
DECE_BA	9	4	5	1	3	0	
DECE_BS	6	5	1	0	5	0	
DEEE_BA	14	9	5	1	8	0	
DEEE_BS	15	12	3	2	10	0	
ECED_BS	1	0	1	0	0	0	
ECED_PPRU	38	30	8	2	28	0	
ECEF_BA	23	12	11	1	11	0	
ECEF_BS	12	7	5	1	6	0	
ELED_BS	3	0	3	0	0	0	
ELED_PPRU	329	216	113	19	197	0	
FACS_PPRU	20	14	6	0	14	0	
FCHD_BS	1	1	0	0	1	0	
FCHD_PPRU	21	14	7	3	11	0	
FLST_PPRU	11	6	5	1	5	0	
HEPR_PPRU	23	10	13	1	9	0	
HMSC_BS	9	4	5	1	3	0	
HMSC_EXSC_BS	82	46	36	1	45	0	
HMSC_PHET_BS	10	7	3	0	7	0	
HMSC_PPTH_BS	82	46	36	3	43	0	
PARE_BS	7	3	4	0	3	0	
PSTE_BA	1	1	0	1	0	0	
PSYC_PPRU	258	152	106	13	138	1	
SECE_BS	1	1	0	0	1	0	
SPEC_PPRU	76	51	25	4	47	0	
SSCT_PPRU	28	22	6	0	22	0	

College of Engineering
January 2, 2012
Fall 2012

Fall 2011 Domestic and International Applicants at any USU Campus							
Total							
	Total	Complete	Incomplete	Evaluation	Admitted	Denied	Enrolled
ATMM_BS	18	11	7	0	11	0	
ATMM_PPRU	1	0	1	0	0	0	
ATPP_BS	89	58	31	6	52	0	
ATPP_PPRU	16	9	7	1	8	0	
BIEN_PPRU	72	50	22	1	48	1	
CIEN_PPRU	101	58	43	3	55	0	
CMPE_PPRU	55	28	27	3	24	1	
ELEN_PPRU	59	34	25	6	27	1	
ENVE_PPRU	21	13	8	0	12	1	
ETED_BS	13	8	5	0	8	0	
GENG_PPRU	182	142	40	10	132	0	
MEEN_AS_PPRU	157	109	48	5	104	0	
MEEN_PPRU	292	194	98	13	181	0	

College of Humanities and Social Sciences

January 2, 2012

Fall 2012

	Fall 2011 Domestic and International Applicants at any USU Campus						
	Total						
	Total	Complete	Incomplete	Evaluation	Admitted	Denied	Enrolled
AMST_BA	3	1	2	0	1	0	
AMST_BS	1	1	0	0	1	0	
ANTH_BA	18	12	6	1	11	0	
ANTH_BS	12	7	5	3	4	0	
ASIA_BA	6	5	1	0	5	0	
ENGL_BA	62	27	35	3	24	0	
ENGL_BS	43	25	18	0	25	0	
ENGL_CRWR_BS	1	1	0	0	1	0	
ENGL_ENGT_BA	29	19	10	3	16	0	
ENGL_ENGT_BS	17	8	9	0	8	0	
ENGT_BS	2	2	0	0	2	0	
FREN_BA	3	1	2	0	1	0	
FREN_FRTE_BA	36	27	9	0	27	0	
HIST_PPRU	22	14	8	1	13	0	
HISTHTCHPPRU	2	2	0	0	2	0	
IELI_PPRU	32	21	11	3	18	0	
INTS_HS_BA	1	1	0	0	1	0	
JOUR_BS	75	45	30	4	41	0	
JOUR_PPRU	20	6	14	0	6	0	
LACS_BA	38	20	18	0	19	1	
LACS_BS	12	5	7	0	5	0	
LBAR_BA	1	0	1	0	0	0	
LIAR_BA	4	3	1	1	2	0	
PHIL_BA	2	1	1	0	1	0	
PHIL_BS	16	11	5	0	11	0	
POLS_BA	27	19	8	1	18	0	
POLS_BS	1	1	0	0	1	0	
RELS_BA	1	1	0	0	1	0	
RELS_BS	18	11	7	1	10	0	
SOCI_BA	21	17	4	1	16	0	
SOCI_BS	54	35	19	2	33	0	

College of Humanities, Arts, and Social Sciences
January 2, 2012
Fall 2012

	Fall 2011 Domestic and International Applicants at any USU Campus						
	Total						
	Total	Complete	Incomplete	Evaluation	Admitted	Denied	Enrolled
HIST_BS	1	1	0	0	1	0	
INTS_HU_BA	1	1	0	0	1	0	
MUSC_PPRU	1	1	0	0	1	0	
POLS_BS	3	3	0	0	3	0	

College of Natural Resources

January 2, 2012

Fall 2012

Fall 2011 Domestic and International Applicants at any USU Campus							
Total							
	Total	Complete	Incomplete	Evaluation	Admitted	Denied	Enrolled
CREC_BS	5	3	2	0	3	0	
ENST_BS	13	8	5	0	8	0	
FAAS_BS	8	5	3	1	4	0	
FORE_BS	14	7	7	0	7	0	
GEOG_BS	1	1	0	0	1	0	
NRUN_PPRU	16	10	6	1	9	0	
RARE_BS	2	2	0	0	2	0	
RRMG_BS	5	3	2	0	3	0	
WISC_BS	63	39	24	3	36	0	

College of Science

January 2, 2012

Fall 2012

Fall 2011 Domestic and International Applicants at any USU Campus							
Total							
	Total	Complete	Incomplete	Evaluation	Admitted	Denied	Enrolled
AEGE_BS	1	1	0	0	1	0	
BIOC_BS	91	52	39	6	45	1	
BIOL_BIOL_BA	52	27	25	3	23	1	
BIOL_BIOL_BS	219	152	67	13	138	1	
BIOL_BS	3	0	3	0	0	0	
BIOL_CEMO_BA	11	5	6	1	4	0	
BIOL_CEMO_BS	44	27	17	0	27	0	
BIOL_ECBD_BA	1	1	0	0	1	0	
BIOL_ECBD_BS	6	6	0	1	5	0	
BIOL_ENVR_BA	8	6	2	0	6	0	
BIOL_ENVR_BS	20	13	7	0	13	0	
BSCT_BA	4	3	1	0	3	0	
BSCT_BS	1	1	0	0	1	0	
CHEM_BA	19	13	6	0	13	0	
CHEM_BS	71	55	16	5	50	0	
CHTE_BA	2	1	1	0	1	0	
CHTE_BS	1	1	0	0	1	0	
COSC_BS	1	1	0	0	1	0	
COSC_PPRU	89	42	47	2	40	0	
CTES_BA	1	1	0	0	1	0	
CTES_BS	1	1	0	0	1	0	
GEOL_BA	3	2	1	0	2	0	
GEOL_BS	8	2	6	0	2	0	
MAED_BA	8	7	1	0	7	0	
MAED_BS	26	19	7	1	18	0	
MAST_BS	1	1	0	0	1	0	
MATH_BA	18	11	7	3	8	0	
MATH_BS	31	25	6	0	25	0	
MSCT_BS	2	1	1	0	1	0	
PHXT_BS	1	1	0	0	1	0	
PHYX_BA	7	5	2	0	5	0	
PHYX_BS	41	27	14	3	24	0	
PUHE_BS	3	1	2	0	1	0	
PUHE_ENHE_BS	22	15	7	1	14	0	

University Studies

January 2, 2012

Fall 2012

Fall 2011 Domestic and International Applicants at any USU Campus							
Total							
	Total	Complete	Incomplete	Evaluation	Admitted	Denied	Enrolled
GENS_PPRU	1	1	0	0	1	0	
UALL_PPRU	333	166	167	23	143	0	
UBUS_PPRU	231	218	13	2	216	0	
UNDE_PPRU	1502	1031	471	71	937	23	

GLOSSARY

Total	<i>All applications received for particular student type. Sum of incomplete, evaluation, admitted, and denied.</i>	
Incomplete	<i>Applications that have not been evaluated and are missing checklist items.</i>	
Evaluation	<i>Complete applications that do not have a decision and are being evaluated by processor, referral, or committee.</i>	
Admitted	<i>Students who have been offered acceptance to the university.</i>	
Denied	<i>Students not accepted to USU main campus.</i>	
Complete Applications	<i>Applications that have are able to have a decision made. Sum of evaluation, admitted, and denied.</i>	
Enrolled	<i>Students who are enrolled for any number of credits above zero.</i>	
Resident	<i>Students who have been determined to have Utah residency for tuition purposes.</i>	
Non-resident	<i>Students who have been determined to have out-of-state residency for tuition purposes.</i>	
Undetermined	<i>Students who have not had a residency evaluation for tuition purposes.</i>	
International	<i>Students who have been determined to have international residency for tuition purposes.</i>	
Incomplete Rate	<i>Incomplete / Total</i>	<i>Percent of incomplete applications from total applications.</i>
Evaluation Rate	<i>Evaluation / Complete Applications</i>	<i>Percent of applications in evaluations from complete applications.</i>
Admitted Rate	<i>Admitted / Complete Applications</i>	<i>Percent of admitted applications from complete applications.</i>
Denied Rate	<i>Denied / Complete Applications</i>	<i>Percent of denied applications from complete applications.</i>
Complete Applications Rate	<i>Complete Applications / Total</i>	<i>Percent of complete applications from total applications.</i>
Yield (Enrolled Rate)	<i>Enrolled / Admitted</i>	<i>Percent of enrolled students from admitted applications.</i>
Main Campus	<i>Unregistered applicants who applied for Main Campus and applicants registered at Main Campus.</i>	
RCDE / Off Campus	<i>Unregistered applicants who applied for Off Campus and applicants registered at Off Campus.</i>	
Domestic	<i>Applicants applying as domestic freshmen, transfers, or returning students.</i>	
International	<i>Applicants applying as international freshmen, transfers, or returning students.</i>	
Freshmen	<i>The title Freshmen refers to first-time to higher education students</i>	

Please refer to the AAA for official USU numbers.