

Think

Summer 2007 Semester

Undergraduate Admissions Application Report

July 27, 2007

End of Term

Office of Admissions

Freshmen Profile
July 27, 2007
Summer 2007

	Summer 2007 Total							Summer 2006 As of 7/28/2006						
	Total	Complete	Incomplete	Evaluation	Admitted	Denied	Enrolled	Total	Complete	Incomplete	Evaluation	Admitted	Denied	Enrolled
Total	219	192	27	0	179	13	102	192	163	29	1	155	7	78
Rate		87.7%	12.3%	0.0%	93.2%	6.8%	57.0%		84.9%	15.1%	0.6%	95.1%	4.3%	50.3%

	Residency													
	Total	Complete	Incomplete	Evaluation	Admitted	Denied	Enrolled	Total	Complete	Incomplete	Evaluation	Admitted	Denied	Enrolled
Resident	149	134	15	0	129	5	72	122	110	12	0	107	3	56
Rate		89.9%	10.1%	0.0%	96.3%	3.7%	55.8%		90.2%	9.8%	0.0%	97.3%	2.7%	52.3%
Non-Resident	63	56	7	0	50	6	25	59	53	6	1	48	4	22
Rate		88.9%	11.1%	0.0%	89.3%	10.7%	50.0%		89.8%	10.2%	1.9%	90.6%	7.5%	45.8%
Undetermined	7	2	5	0	0	2	5	10	0	10	0	0	0	0
Rate		28.6%	71.4%	0.0%	0.0%	100.0%	0.0%		0.0%	100.0%	0.0%	0.0%	0.0%	0.0%
Other	0	0	0	0	0	0	0							
Rate		0.0%	0.0%	0.0%	0.0%	0.0%	0.0%							

	Ethnicity													
	Total	Complete	Incomplete	Evaluation	Admitted	Denied	Enrolled	Total	Complete	Incomplete	Evaluation	Admitted	Denied	Enrolled
American Indian/Alaskan Native	1	1	0	0	1	0	0	1	1	0	0	1	0	0
Rate		100.0%	0.0%	0.0%	100.0%	0.0%	0.0%		100.0%	0.0%	0.0%	100.0%	0.0%	0.0%
Asian/Pacific Islander	4	3	1	0	3	0	1	1	1	0	0	1	0	1
Rate		75.0%	25.0%	0.0%	100.0%	0.0%	33.3%		100.0%	0.0%	0.0%	100.0%	0.0%	100.0%
Black	4	2	2	0	2	0	2	3	2	1	0	2	0	2
Rate		50.0%	50.0%	0.0%	100.0%	0.0%	100.0%		66.7%	33.3%	0.0%	0.0%	0.0%	100.0%
Hispanic	9	8	1	0	7	1	4	9	8	1	0	7	1	4
Rate		88.9%	11.1%	0.0%	87.5%	12.5%	57.1%		88.9%	11.1%	0.0%	87.5%	12.5%	57.1%
Multicultural	2	2	0	0	2	0	0	3	3	0	0	3	0	3
Rate		100.0%	0.0%	0.0%	100.0%	0.0%	0.0%		100.0%	0.0%	0.0%	100.0%	0.0%	100.0%
Blank	0	0	0	0	0	0	0	4	0	4	0	0	0	0
Rate		0.0%	0.0%	0.0%	0.0%	0.0%	0.0%		0.0%	100.0%	0.0%	0.0%	0.0%	0.0%
Other	17	13	4	0	13	0	8	7	7	0	0	7	0	3
Rate		76.5%	23.5%	0.0%	100.0%	0.0%	61.5%		100.0%	0.0%	0.0%	100.0%	0.0%	42.9%
White	182	163	19	0	151	12	87	164	141	23	1	134	6	65
Rate		89.6%	10.4%	0.0%	92.6%	7.4%	57.6%		86.0%	14.0%	0.7%	95.0%	4.3%	48.5%

	International													
	Total	Complete	Incomplete	Evaluation	Admitted	Denied	Enrolled	Total	Complete	Incomplete	Evaluation	Admitted	Denied	Enrolled
Total	16	13	3	0	13	0	7	37	34	3	0	34	0	22
Rate		81.3%	18.8%	0.0%	100.0%	0.0%	53.8%		91.9%	8.1%	0.0%	100.0%	0.0%	64.7%

	Summer 2007							Summer 2006						
	Total	Complete	Incomplete	Evaluation	Admitted	Denied	Enrolled	Total	Complete	Incomplete	Evaluation	Admitted	Denied	Enrolled
7/27/2007	219	192	27	0	179	13	102	192	163	29	1	155	7	78

Freshmen ACT Score Distribution

July 27, 2007

Summer 2007

Summer 2007 Total						
ACT Score	Incomplete	Evaluation	Admitted	Denied	Enrolled	Yield
34	0	0	1	0	1	100%
32	0	0	1	0	0	0%
31	0	0	1	0	1	100%
30	0	0	5	0	2	40%
29	0	0	2	0	0	0%
28	0	0	6	0	4	67%
27	0	0	12	0	4	33%
26	1	0	13	0	7	54%
25	0	0	19	0	9	47%
24	1	0	9	0	5	56%
23	1	0	13	0	9	69%
22	0	0	16	1	8	50%
21	1	0	15	0	5	33%
20	2	0	23	0	15	65%
19	0	0	11	0	7	64%
18	0	0	12	1	7	58%
17	0	0	9	0	7	78%
16	0	0	2	1	2	100%
15	0	0	0	4	1	0%
14	2	0	0	4	2	0%
13	0	0	0	2	0	0%
12	0	0	0	0	0	0%
11	0	0	0	0	0	0%
10	0	0	0	0	0	0%
Grand Total	8	0	170	13	96	
Average	20.3	0.0	22.7	15.2	22.0	56%

Summer 2006 As of 7/28/2006						
ACT Score	Incomplete	Evaluation	Admitted	Denied	Enrolled	Yield
34	0	0	2	0	2	100%
32	0	0	0	0	0	0%
31	0	0	2	0	1	50%
30	1	0	2	0	1	50%
29	0	0	5	0	3	60%
28	0	0	4	0	3	75%
27	0	0	3	0	1	33%
26	0	0	15	0	5	33%
25	1	0	8	0	5	63%
24	0	0	22	0	10	45%
23	1	0	16	0	7	44%
22	0	0	12	0	7	58%
21	3	0	10	0	4	40%
20	2	0	14	0	5	36%
19	2	1	10	0	6	60%
18	1	0	8	0	4	50%
17	4	0	4	1	3	75%
16	0	0	2	2	2	100%
15	0	0	2	1	1	50%
14	0	0	1	2	1	100%
13	0	0	1	0	1	100%
12	0	0	0	0	0	0%
11	0	0	0	1	0	0%
9	0	0	0	0	0	0%
Grand Total	15	1	143	7	72	
Average	21.2	0.0	22.8	16.6	22.7	61%

Freshmen Index Distribution

July 27, 2007
Summer 2007

Index	Summer 2007					
	Incomplete	Evaluation	Admitted	Denied	Enrolled	Yield
138	0	0	1	0	1	100%
131	0	0	1	0	1	100%
129	0	0	1	0	0	0%
127	0	0	1	0	0	0%
126	0	0	1	0	1	100%
125	0	0	2	0	2	100%
124	0	0	5	0	3	60%
123	0	0	2	0	0	0%
122	0	0	4	0	1	25%
121	0	0	4	0	1	25%
120	0	0	2	0	1	50%
119	0	0	2	0	0	0%
118	0	0	1	0	1	100%
117	0	0	8	0	3	38%
116	0	0	2	0	1	50%
115	0	0	5	0	2	40%
114	0	0	5	0	2	40%
113	0	0	6	0	4	67%
112	0	0	5	0	3	60%
111	0	0	2	0	2	100%
110	0	0	4	0	2	50%
109	0	0	2	0	1	50%
108	0	0	2	0	1	50%
106	0	0	5	0	3	60%
105	0	0	1	0	0	0%
104	0	0	1	0	0	0%
103	0	0	6	0	2	33%
102	0	0	5	0	2	40%
101	0	0	7	0	1	14%
100	0	0	2	0	1	50%
99	2	0	10	1	9	90%
98	0	0	1	0	0	0%
97	0	0	5	0	3	60%
96	0	0	2	0	2	100%
95	0	0	4	0	3	75%
94	0	0	4	1	2	50%
93	0	0	1	0	0	0%
92	0	0	8	0	6	75%
91	0	0	4	0	2	50%
90	0	0	6	1	5	83%
89	0	0	4	1	3	75%
88	0	0	1	0	1	100%
87	0	0	2	0	0	0%
86	0	0	2	0	2	100%
85	0	0	1	1	1	100%
84	0	0	2	0	1	50%
83	0	0	2	0	2	100%
81	1	0	3	0	2	67%
80	0	0	2	0	1	50%
79	1	0	0	1	1	0%
78	0	0	1	0	1	100%
77	0	0	1	3	2	200%
74	0	0	0	1	0	0%
72	0	0	0	0	0	0%
70	0	0	0	1	0	0%
65	0	0	0	1	0	0%
63	0	0	0	0	0	0%
53	0	0	0	0	0	0%
Grand Total	4	0	161	12	91	
Average	89.5	0.0	104.2	81.3	101.6	57%

Index	Summer 2006					
	Incomplete	Evaluation	Admitted	Denied	Enrolled	Yield
134	0	0	1	0	1	100%
133	0	0	1	0	1	100%
132	0	0	1	0	1	100%
131	0	0	1	0	1	100%
129	0	0	1	0	0	0%
127	0	0	2	0	1	50%
126	0	0	0	0	0	0%
125	0	0	0	0	0	0%
124	0	0	3	0	0	0%
122	0	0	5	0	2	40%
121	0	0	1	0	0	0%
120	0	0	3	0	2	67%
119	0	0	4	0	1	25%
118	0	0	3	0	1	33%
117	0	0	4	0	2	50%
116	0	0	2	0	1	50%
115	0	0	8	0	2	25%
114	0	0	2	0	1	50%
113	0	0	2	0	1	50%
112	0	0	6	0	3	50%
111	0	0	2	0	0	0%
110	0	0	5	0	3	60%
109	0	0	5	0	1	20%
108	0	0	7	0	2	29%
107	0	0	1	0	1	100%
106	2	0	9	0	6	67%
105	0	0	3	0	2	67%
104	0	0	7	0	5	71%
103	1	0	1	0	1	100%
102	1	0	0	0	0	0%
101	0	0	3	0	1	33%
100	0	0	0	0	0	0%
99	0	0	6	0	5	83%
98	0	0	1	0	0	0%
97	0	0	2	0	0	0%
96	0	0	3	0	1	33%
95	0	0	5	0	3	60%
94	0	0	1	0	1	100%
93	0	0	1	0	0	0%
92	0	0	1	0	1	100%
91	0	0	1	0	1	100%
90	0	0	4	0	1	25%
89	0	0	0	0	0	0%
88	0	0	2	1	1	50%
87	0	0	4	0	1	25%
86	0	0	2	0	1	50%
85	0	0	2	0	2	100%
83	0	0	2	1	2	100%
81	0	0	1	1	1	100%
80	0	0	1	1	0	0%
79	0	0	0	1	0	0%
77	0	0	1	0	0	0%
76	0	0	1	0	0	0%
74	0	0	2	0	1	50%
69	0	0	0	1	0	0%
68	0	0	1	0	0	0%
67	0	0	0	1	1	0%
64	0	0	0	0	0	0%
Grand Total	4	0	136	7	66	
Average	125.0	0.0	105.3	78.3	103.5	50%

Transfer Profile
July 27, 2007
Summer 2007

	Summer 2007 Total							Summer 2006 As of 7/28/2006						
	Total	Complete	Incomplete	Evaluation	Admitted	Denied	Enrolled	Total	Complete	Incomplete	Evaluation	Admitted	Denied	Enrolled
Total	167	139	28	1	129	9	73	202	167	35	2	157	8	90
Rate		83.2%	16.8%	0.7%	92.8%	6.5%	56.6%		82.7%	17.3%	1.2%	94.0%	4.8%	57.3%

	Residency													
	Total	Complete	Incomplete	Evaluation	Admitted	Denied	Enrolled	Total	Complete	Incomplete	Evaluation	Admitted	Denied	Enrolled
Resident	103	88	15	1	83	4	52	123	103	20	1	98	4	63
Rate		85.4%	14.6%	1.1%	94.3%	4.5%	62.7%		83.7%	16.3%	1.0%	95.1%	3.9%	64.3%
Non-Resident	61	49	12	0	46	3	20	70	61	9	0	57	4	27
Rate		80.3%	19.7%	0.0%	93.9%	6.1%	43.5%		87.1%	12.9%	0.0%	93.4%	6.6%	47.4%
Undetermined	3	2	1	0	0	2	1	8	2	6	0	2	0	0
Rate		66.7%	33.3%	0.0%	0.0%	100.0%	0.0%		25.0%	75.0%	0.0%	100.0%	0.0%	0.0%
Other	0	0	0	0	0	0	0							
Rate		0.0%	0.0%	0.0%	0.0%	0.0%	0.0%							

	Ethnicity													
	Total	Complete	Incomplete	Evaluation	Admitted	Denied	Enrolled	Total	Complete	Incomplete	Evaluation	Admitted	Denied	Enrolled
American Indian/Alaskan Native	1	1	0	0	1	0	1	1	1	0	0	1	0	0
Rate		100.0%	0.0%	0.0%	100.0%	0.0%	100.0%		100.0%	0.0%	0.0%	100.0%	0.0%	0.0%
Asian/Pacific Islander	7	6	1	0	4	2	3	4	2	2	1	1	0	1
Rate		85.7%	14.3%	0.0%	66.7%	33.3%	75.0%		50.0%	50.0%	50.0%	50.0%	0.0%	100.0%
Black	5	4	1	0	4	0	3	2	2	0	0	2	0	1
Rate		80.0%	20.0%	0.0%	100.0%	0.0%	75.0%		100.0%	0.0%	0.0%	100.0%	0.0%	50.0%
Hispanic	5	4	1	0	4	0	2	7	7	0	0	5	2	3
Rate		80.0%	20.0%	0.0%	100.0%	0.0%	50.0%		100.0%	0.0%	0.0%	71.4%	28.6%	60.0%
Multicultural	2	1	1	0	1	0	0	1	1	0	0	1	0	0
Rate		50.0%	50.0%	0.0%	100.0%	0.0%	0.0%		100.0%	0.0%	0.0%	100.0%	0.0%	0.0%
Blank	0	0	0	0	0	0	0	5	4	1	0	4	0	3
Rate		0.0%	0.0%	0.0%	0.0%	0.0%	0.0%		80.0%	20.0%	0.0%	100.0%	0.0%	75.0%
Other	16	12	4	1	10	1	5	7	6	1	0	6	0	2
Rate		75.0%	25.0%	8.3%	83.3%	8.3%	50.0%		85.7%	14.3%	0.0%	100.0%	0.0%	33.3%
White	131	111	20	0	105	6	59	175	144	31	1	137	6	80
Rate		84.7%	15.3%	0.0%	94.6%	5.4%	56.2%		82.3%	17.7%	0.7%	95.1%	4.2%	58.4%

	International													
	Total	Complete	Incomplete	Evaluation	Admitted	Denied	Enrolled	Total	Complete	Incomplete	Evaluation	Admitted	Denied	Enrolled
Total	12	9	3	0	9	0	3	19	19	0	1	18	0	14
Rate		75.0%	25.0%	0.0%	100.0%	0.0%	33.3%		100.0%	0.0%	5.3%	94.7%	0.0%	77.8%

	Summer 2007							Summer 2006						
	Total	Complete	Incomplete	Evaluation	Admitted	Denied	Enrolled	Total	Complete	Incomplete	Evaluation	Admitted	Denied	Enrolled
7/27/2007	167	139	28	1	129	9	73	202	167	35	2	157	8	90

Reapplicant Profile
July 27, 2007
Summer 2007

	Summer 2007 Total							Summer 2006 As of 7/28/2006						
	Total	Complete	Incomplete	Evaluation	Admitted	Denied	Enrolled	Total	Complete	Incomplete	Evaluation	Admitted	Denied	Enrolled
Total	159	150	9	3	141	6	81	176	159	17	8	144	7	88
Rate		94.3%	5.7%	2.0%	94.0%	4.0%	57.4%		90.3%	9.7%	5.0%	90.6%	4.4%	61.1%

	Residency													
	Total	Complete	Incomplete	Evaluation	Admitted	Denied	Enrolled	Total	Complete	Incomplete	Evaluation	Admitted	Denied	Enrolled
Resident	132	125	7	3	120	2	66	153	13	11	7	128	7	79
Rate		94.7%	5.3%	2.4%	96.0%	1.6%	55.0%		8.5%	7.2%	53.8%	984.6%	53.8%	61.7%
Non-Resident	24	23	1	0	21	2	13	18	17	1	1	16	0	9
Rate		95.8%	4.2%	0.0%	91.3%	8.7%	61.9%		94.4%	5.6%	5.9%	94.1%	0.0%	56.3%
Undetermined	2	2	0	0	0	2	2	4	0	4	0	0	0	0
Rate		100.0%	0.0%	0.0%	0.0%	100.0%	0.0%		0.0%	100.0%	0.0%	0.0%	0.0%	0.0%
Other	0	0	0	0	0	0	0							
Rate		0.0%	0.0%	0.0%	0.0%	0.0%	0.0%							

	Ethnicity													
	Total	Complete	Incomplete	Evaluation	Admitted	Denied	Enrolled	Total	Complete	Incomplete	Evaluation	Admitted	Denied	Enrolled
American Indian/Alaskan Native	4	4	0	0	4	0	2	2	1	1	0	1	0	0
Rate		100.0%	0.0%	0.0%	100.0%	0.0%	50.0%		50.0%	50.0%	0.0%	0.0%	0.0%	0.0%
Asian/Pacific Islander	1	1	0	0	1	0	0	3	2	1	0	2	0	2
Rate		100.0%	0.0%	0.0%	100.0%	0.0%	0.0%		66.7%	33.3%	0.0%	100.0%	0.0%	100.0%
Black	3	3	0	0	3	0	1	2	2	0	1	1	0	1
Rate		100.0%	0.0%	0.0%	100.0%	0.0%	33.3%		100.0%	0.0%	50.0%	50.0%	0.0%	100.0%
Hispanic	2	2	0	0	2	0	0	1	1	0	0	1	0	0
Rate		100.0%	0.0%	0.0%	100.0%	0.0%	0.0%		100.0%	0.0%	0.0%	100.0%	0.0%	0.0%
Multicultural	1	1	0	0	1	0	1	0	0	0	0	0	0	0
Rate		100.0%	0.0%	0.0%	100.0%	0.0%	100.0%		0.0%	0.0%	0.0%	0.0%	0.0%	0.0%
Blank	0	0	0	0	0	0	0	3	3	0	0	3	0	2
Rate		0.0%	0.0%	0.0%	0.0%	0.0%	0.0%		100.0%	0.0%	0.0%	100.0%	0.0%	66.7%
Other	7	6	1	0	6	0	6	3	3	0	0	2	1	2
Rate		85.7%	14.3%	0.0%	100.0%	0.0%	100.0%		100.0%	0.0%	0.0%	66.7%	33.3%	100.0%
White	141	133	8	3	124	6	71	162	147	15	7	134	6	81
Rate		94.3%	5.7%	2.3%	93.2%	4.5%	57.3%		90.7%	9.3%	4.8%	91.2%	4.1%	60.4%

	International													
	Total	Complete	Incomplete	Evaluation	Admitted	Denied	Enrolled	Total	Complete	Incomplete	Evaluation	Admitted	Denied	Enrolled
Total	1	1	0	0	1	0	1	2	2	0	0	2	0	1
Rate		100.0%	0.0%	0.0%	100.0%	0.0%	100.0%		100.0%	0.0%	0.0%	100.0%	0.0%	50.0%

	Summer 2007							Summer 2006						
	Total	Complete	Incomplete	Evaluation	Admitted	Denied	Enrolled	Total	Complete	Incomplete	Evaluation	Admitted	Denied	Enrolled
7/27/2007	159	150	9	3	141	6	81	176	159	17	8	144	7	88

Regional Campuses & Distance Education

July 27, 2007

Summer 2007

	Summer 2007							Summer 2006						
	Total							As of 7/28/2006						
	Total	Complete	Incomplete	Evaluation	Admitted	Denied	Enrolled	Total	Complete	Incomplete	Evaluation	Admitted	Denied	Enrolled
Total	478	401	77	9	383	9	245	388	320	68	6	306	8	220
Rate		83.9%	16.1%	2.2%	95.5%	2.2%	64.0%		82.5%	17.5%	1.9%	95.6%	2.5%	71.9%

	Site Location													
	Total	Complete	Incomplete	Evaluation	Admitted	Denied	Enrolled	Total	Complete	Incomplete	Evaluation	Admitted	Denied	Enrolled
Blanding Campus	7	6	1	1	5	0	4	6	4	2	0	4	0	1
Brigham City Campus	54	47	7	1	45	1	30	45	41	4	0	40	1	25
Southwest Centers	37	32	5	1	30	1	21	37	30	7	0	30	0	14
Moab Campus	6	5	1	0	5	0	2	2	2	0	0	2	0	0
Logan Continuing Ed. Center	117	103	14	3	98	2	60	11	7	4	0	7	0	7
North Central Campus	0	0	0	0	0	0	0	1	1	0	0	0	1	0
Ogden Campus	3	3	0	0	3	0	0	6	5	1	0	5	0	3
Price Campus	5	4	1	0	4	0	2	7	6	1	0	6	0	3
Prison Campus	11	6	5	0	6	0	4	17	12	5	0	12	0	14
Salt Lake City Campus	67	61	6	2	59	0	35	63	50	13	2	47	1	33
Tooele Campus	87	63	24	0	61	2	43	64	53	11	0	49	4	38
Uintah Basin Campus	84	71	13	1	67	3	44	79	71	8	1	69	1	51
International Campus	0	0	0	0	0	0	0	0	0	0	0	0	0	0

	Summer 2007							Summer 2006						
	Total	Complete	Incomplete	Evaluation	Admitted	Denied	Enrolled	Total	Complete	Incomplete	Evaluation	Admitted	Denied	Enrolled
7/27/2007	478	401	77	9	383	9	245	388	320	68	6	306	8	220

Application Profile Summary

July 27, 2007

Summer 2007

Freshmen										
	Total	Complete	Incomplete	Evaluation	Admitted	Denied	Non-Resident Complete	Non-Resident Admitted	Enrolled	Enrollment Yield
2007 (7/27/2007)	219	192	27	0	179	13	56	50	102	57.0%
As of 7/20/2007	-5	-5	0	0	-5	0	-1	-1	-1	+1.0
2006 (End of Term)	192	163	29	1	155	7	53	48	78	50.3%
2005 (End of Term)		222			213	8	59	56	84	39.4%
2004 (End of Term)		197			155	40	50	41	86	55.5%

Transfer										
	Total	Complete	Incomplete	Evaluation	Admitted	Denied	Non-Resident Complete	Non-Resident Admitted	Enrolled	Enrollment Yield
2007 (7/27/2007)	167	139	28	1	129	9	49	46	73	56.6%
As of 7/20/2007	-3	-2	-1	0	-2	0	-1	-1	0	+0.9
2006 (End of Term)	202	167	35	2	157	8	61	57	90	57.3%
2005 (End of Term)		254			239	11	83	81	119	49.8%
2004 (End of Term)		285			261	19	86	77	142	54.4%

Reapplicant										
	Total	Complete	Incomplete	Evaluation	Admitted	Denied	Non-Resident Complete	Non-Resident Admitted	Enrolled	Enrollment Yield
2007 (7/27/2007)	159	150	9	3	141	6	23	21	81	57.4%
As of 7/20/2007	0	0	0	0	0	0	0	0	0	+0.0
2006 (End of Term)	176	159	17	8	144	7	17	16	88	61.1%
2005 (End of Term)		212			178	19	46	40	92	51.7%
2004 (End of Term)		217			196	10	59	53	109	55.6%

Executive Summary

July 27, 2007

Summer 2007

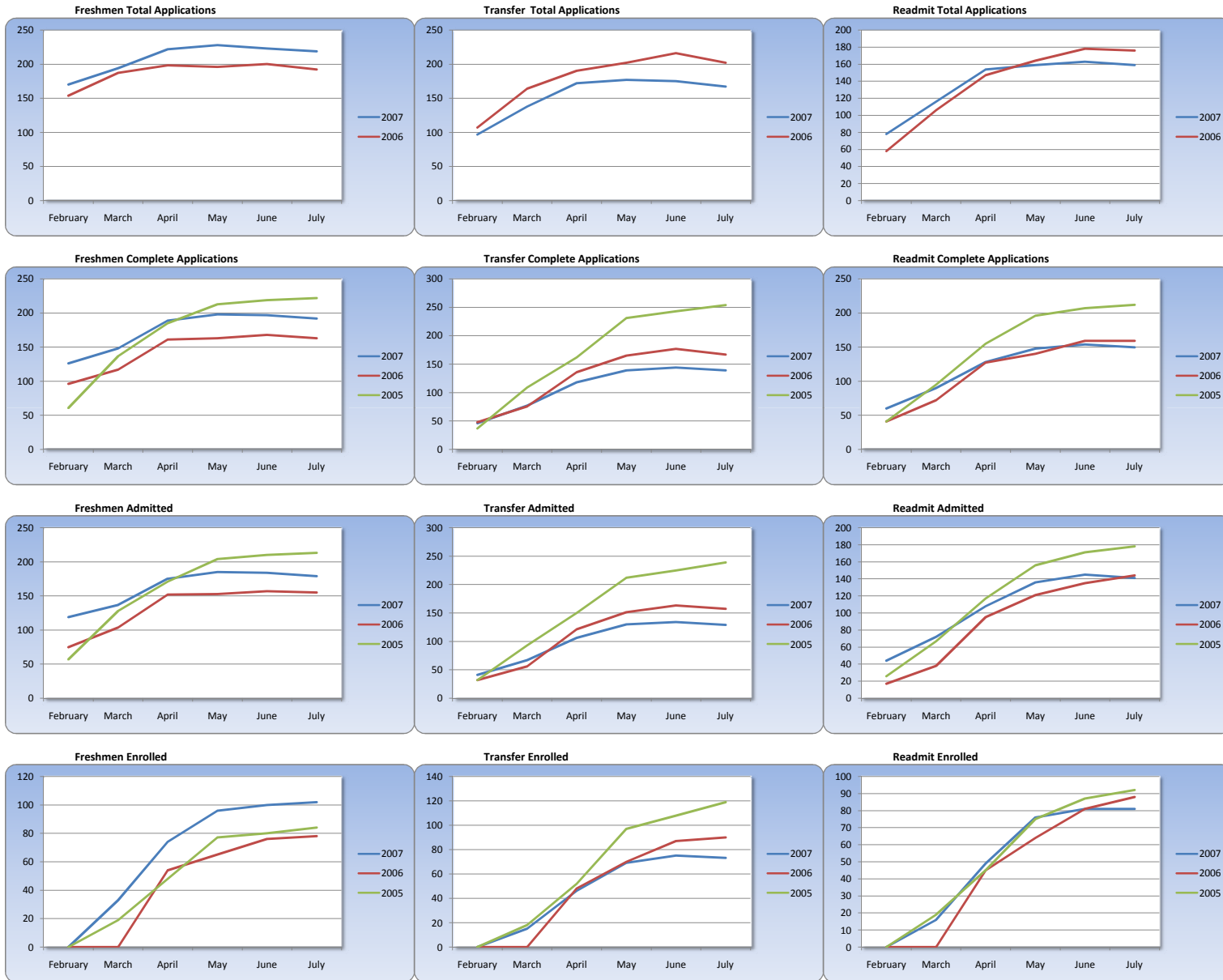
	Freshmen		
	7/27/2007	As of 7/28/2006	End of Term 2006*
Resident	129	107	107
Non-Resident	50	48	48
Undetermined	0	0	0
International	13	34	34
Total Admitted	192	189	189
Admitted Multicultural**	28	21	21
Average Admitted ACT Score	22.7	22.8	22.8
Average Admitted Index	104.2	136.0	105.3
Resident	72	56	56
Non-Resident	25	22	22
Undetermined	5	0	0
International	7	22	22
Total Enrolled	109	100	100
Enrolled Multicultural**			13
Average Enrolled ACT Score	22.0	22.7	22.7
Average Enrolled Index	101.6	66.0	103.5
Denied	13	7	7

	Transfer		
	7/27/2007	As of 7/28/2006	End of Term 2006*
Resident	83	98	98
Non-Resident	46	57	57
Undetermined	0	2	2
International	9	18	18
Total Admitted	138	175	175
Admitted Multicultural**	24	20	20
Resident	52	63	63
Non-Resident	20	27	27
Undetermined	1	0	0
International	3	14	14
Total Enrolled	76	104	104
Enrolled Multicultural**	14	10	10
Denied	9	8	8

*Taken from July 28, 2006 Admissions Report

**All ethnicity types except White

Trend Comparison
July 27, 2007
Summer 2007



High School Market Profile

July 27, 2007
Summer 2007

	Primary In-State													
	Summer 2007							Summer 2006						
	Total	Complete	Incomplete	Evaluation	Admitted	Denied	Enrolled	Total	Complete	Incomplete	Evaluation	Admitted	Denied	Enrolled
Alta	1	1	0	0	1	0	1	1	0	1	0	0	0	0
Bear River	7	5	2	0	5	0	4	4	4	0	0	4	0	2
Bingham	2	2	0	0	0	2	1	2	1	1	0	1	0	0
Bountiful	5	5	0	0	5	0	2	1	1	0	0	1	0	1
Box Elder	1	1	0	0	1	0	1	5	5	0	0	5	0	3
Brighton	2	2	0	0	2	0	2	0	0	0	0	0	0	0
Clearfield	0	0	0	0	0	0	0	2	2	0	0	2	0	1
Copper Hills	0	0	0	0	0	0	0	1	1	0	0	1	0	0
Cottonwood	0	0	0	0	0	0	0	0	0	0	0	0	0	0
Davis	3	3	0	0	3	0	1	1	1	0	0	1	0	0
Fremont	0	0	0	0	0	0	0	2	2	0	0	2	0	1
Hillcrest	2	2	0	0	2	0	1	0	0	0	0	0	0	0
Jordan	1	1	0	0	1	0	0	1	1	0	0	1	0	1
Layton	4	4	0	0	4	0	2	0	0	0	0	0	0	0
Logan	16	15	1	0	14	1	10	11	11	0	0	10	1	7
Lone Peak	5	5	0	0	5	0	2	1	1	0	0	1	0	1
Mountain Crest	26	25	1	0	24	1	16	11	10	1	0	10	0	9
Murray	1	1	0	0	1	0	0	0	0	0	0	0	0	0
Northridge	4	4	0	0	3	1	0	2	1	1	0	1	0	0
Pleasant Grove	1	1	0	0	1	0	0	3	2	1	0	2	0	0
Riverton	3	3	0	0	3	0	3	1	1	0	0	1	0	0
Sky View	16	15	1	0	15	0	12	15	12	3	0	12	0	5
Taylorville	1	1	0	0	1	0	0	1	1	0	0	1	0	0
Viewmont	4	2	2	0	2	0	1	3	3	0	0	3	0	0
Weber	4	4	0	0	4	0	0	1	1	0	0	1	0	1
West Jordan	1	1	0	0	1	0	0	0	0	0	0	0	0	0
Woods Cross	2	2	0	0	2	0	1	4	4	0	0	4	0	2
Total	112	105	7	0	100	5	60	73	65	8	0	64	1	34

	Secondary In-State													
	Summer 2007							Summer 2006						
	Total	Complete	Incomplete	Evaluation	Admitted	Denied	Enrolled	Total	Complete	Incomplete	Evaluation	Admitted	Denied	Enrolled
American Fork	2	2	0	0	1	1	0	1	1	0	0	1	0	0
Ben Lomond	1	0	1	0	0	0	0	0	0	0	0	0	0	0
Bonneville	0	0	0	0	0	0	0	1	1	0	0	1	0	0
Cyprus	0	0	0	0	0	0	0	1	1	0	0	1	0	0
East	0	0	0	0	0	0	0	0	0	0	0	0	0	0
Granger	3	2	1	0	2	0	0	0	0	0	0	0	0	0
Granite	0	0	0	0	0	0	0	0	0	0	0	0	0	0
Grantsville	2	2	0	0	2	0	1							
Highland	0	0	0	0	0	0	0	0	0	0	0	0	0	0
Hunter	0	0	0	0	0	0	0	1	1	0	0	1	0	0
Kearns	0	0	0	0	0	0	0	1	1	0	0	1	0	0
Lehi	2	2	0	0	2	0	0	3	3	0	0	3	0	0
Morgan	1	1	0	0	1	0	0	2	2	0	0	2	0	1
Mountain View	0	0	0	0	0	0	0	0	0	0	0	0	0	0
Ogden	1	1	0	0	1	0	0	1	1	0	0	1	0	1
Olympus	0	0	0	0	0	0	0	0	0	0	0	0	0	0
Orem	1	0	1	0	0	0	0	2	2	0	0	2	0	0
Payson	1	1	0	0	1	0	1	0	0	0	0	0	0	0
Roy	0	0	0	0	0	0	0	1	1	0	0	1	0	0
Skyline	0	0	0	0	0	0	0	1	1	0	0	1	0	0
Spanish Fork	1	1	0	0	1	0	0	1	1	0	0	1	0	0
Springville	0	0	0	0	0	0	0	0	0	0	0	0	0	0
Timpanogos	0	0	0	0	0	0	0	1	1	0	0	1	0	1
Tooele	1	0	1	0	0	0	0							
Uintah	2	2	0	0	2	0	1							
Union	2	1	1	0	1	0	1							
West	0	0	0	0	0	0	0	0	0	0	0	0	0	0
Total	20	15	5	0	14	1	4	17	17	0	0	17	0	3

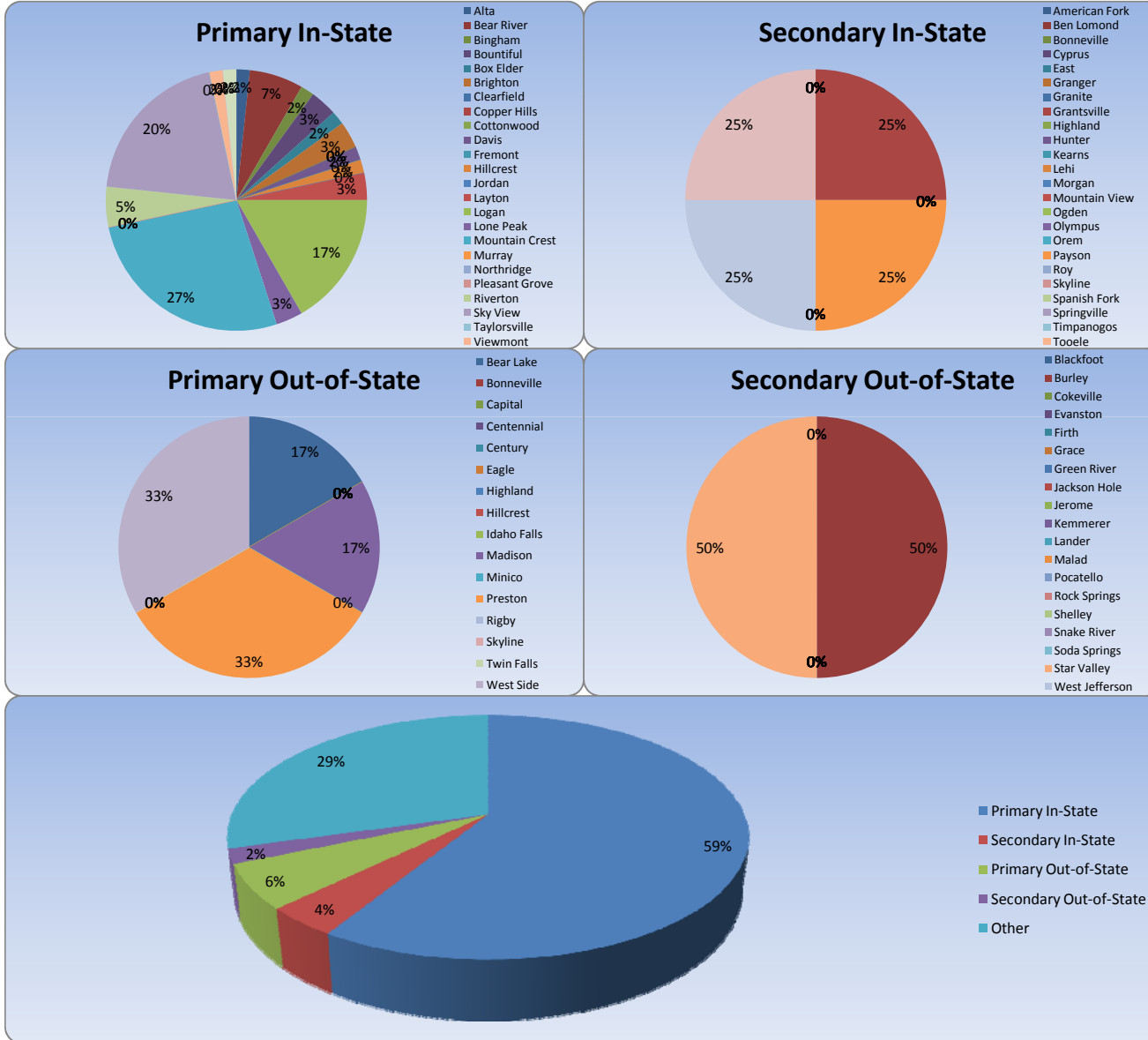
	Primary Out-of-State													
	Summer 2007							Summer 2006						
	Total	Complete	Incomplete	Evaluation	Admitted	Denied	Enrolled	Total	Complete	Incomplete	Evaluation	Admitted	Denied	Enrolled
Bear Lake	1	1	0	0	1	0	1	0	0	0	0	0	0	0
Bonneville	0	0	0	0	0	0	0	0	0	0	0	0	0	0
Capital	0	0	0	0	0	0	0	0	0	0	0	0	0	0
Centennial	0	0	0	0	0	0	0	0	0	0	0	0	0	0
Century	0	0	0	0	0	0	0	0	0	0	0	0	0	0
Eagle	0	0	0	0	0	0	0	1	1	0	0	1	0	0
Highland	0	0	0	0	0	0	0	0	0	0	0	0	0	0
Hillcrest	0	0	0	0	0	0	0	0	0	0	0	0	0	0
Idaho Falls	1	1	0	0	1	0	0	2	0	2	0	0	0	0
Madison	1	1	0	0	1	0	1	1	1	0	0	1	0	1
Minico	1	1	0	0	1	0	0	0	0	0	0	0	0	0
Preston	3	3	0	0	2	1	2	4	4	0	0	4	0	1
Rigby	0	0	0	0	0	0	0	1	1	0	0	1	0	0
Skyline	0	0	0	0	0	0	0	2	1	1	0	1	0	0
Twin Falls	0	0	0	0	0	0	0	0	0	0	0	0	0	0
West Side	4	4	0	0	4	0	2	3	3	0	0	3	0	3
Total	11	11	0	0	10	1	6	14	11	3	0	11	0	5

	Secondary Out-of-State													
	Summer 2007							Summer 2006						
	Total	Complete	Incomplete	Evaluation	Admitted	Denied	Enrolled	Total	Complete	Incomplete	Evaluation	Admitted	Denied	Enrolled
Blackfoot	0	0	0	0	0	0	0	0	0	0	0	0	0	0
Burley	1	1	0	0	1	0	1	0	0	0	0	0	0	0
Cokeville	0	0	0	0	0	0	0	0	0	0	0	0	0	0
Evanston	0	0	0	0	0	0	0	0	0	0	0	0	0	0
Firth	0	0	0	0	0	0	0	0	0	0	0	0	0	0
Grace	0	0	0	0	0	0	0	0	0	0	0	0	0	0
Green River	0	0	0	0	0	0	0	0	0	0	0	0	0	0
Jackson Hole	0	0	0	0	0	0	0	0	0	0	0	0	0	0
Jerome	0	0	0	0	0	0	0	0	0	0	0	0	0	0
Kemmerer	0	0	0	0	0	0	0	0	0	0	0	0	0	0
Lander	0	0	0	0	0	0	0	0	0	0	0	0	0	0
Malad	0	0	0	0	0	0	0	1	1	0	0	1	0	1
Pocatello	0	0	0	0	0	0	0	0	0	0	0	0	0	0
Rock Springs	0	0	0	0	0	0	0	0	0	0	0	0	0	0
Shelley	0	0	0	0	0	0	0	0	0	0	0	0	0	0
Snake River	0	0	0	0	0	0	0	1	1	0	0	1	0	1
Soda Springs	0	0	0	0	0	0	0	0	0	0	0	0	0	0
Star Valley	1	1	0	0	1	0	1	3	3	0	0	3	0	1
West Jefferson	0	0	0	0	0	0	0	1	1	0	0	1	0	0
Total	2	2	0	0	2	0	2	6	6	0	0	6	0	3

High School Market Distribution

July 27, 2007

Summer 2007



Transfer Market Profile

July 27, 2007

Summer 2007

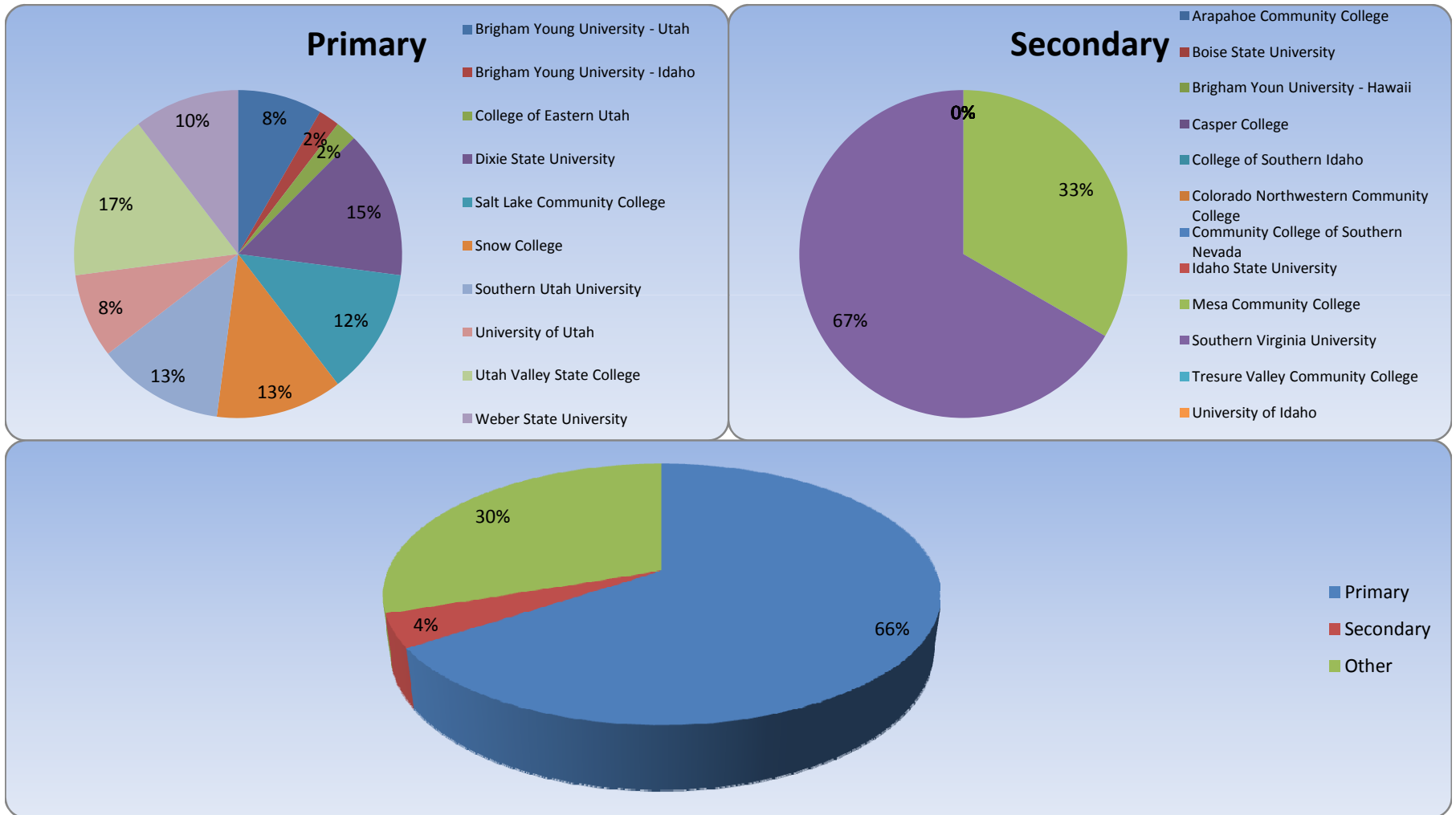
	Primary													
	Summer 2007							Summer 2006						
	Total	Complete	Incomplete	Evaluation	Admitted	Denied	Enrolled	Total	Complete	Incomplete	Evaluation	Admitted	Denied	Enrolled
Brigham Young University - Utah	5	5	0	0	5	0	4	4	4	0	0	4	0	4
Brigham Young University - Idaho	7	5	2	0	4	1	1	13	13	0	0	13	0	6
College of Eastern Utah	4	3	1	0	3	0	1	9	8	1	0	8	0	7
Dixie State University	10	9	1	0	8	1	7	5	4	1	0	3	1	3
Salt Lake Community College	15	11	4	1	10	0	6	27	23	4	0	21	2	12
Snow College	12	10	2	0	10	0	6	14	11	3	1	10	0	6
Southern Utah University	8	8	0	0	7	1	6	6	4	2	0	4	0	2
University of Utah	9	7	2	0	6	1	4	15	13	2	0	12	1	7
Utah Valley State College	17	15	2	0	15	0	8	16	12	4	0	11	1	7
Weber State University	15	13	2	0	11	2	5	17	14	3	0	14	0	10
Total	102	86	16	1	79	6	48	126	106	20	1	100	5	64

	Secondary													
	Summer 2007							Summer 2006						
	Total	Complete	Incomplete	Evaluation	Admitted	Denied	Enrolled	Total	Complete	Incomplete	Evaluation	Admitted	Denied	Enrolled
Arapahoe Community College	0	0	0	0	0	0	0	0	0	0	0	0	0	0
Boise State University	1	0	1	0	0	0	0	2	2	0	0	2	0	1
Brigham Young University - Hawaii	3	3	0	0	3	0	0	2	2	0	0	2	0	0
Casper College	0	0	0	0	0	0	0	0	0	0	0	0	0	0
College of Southern Idaho	1	1	0	0	1	0	0	1	1	0	0	1	0	0
Colorado Northwestern Community College	0	0	0	0	0	0	0	0	0	0	0	0	0	0
Community College of Southern Nevada	0	0	0	0	0	0	0	0	0	0	0	0	0	0
Idaho State University	2	1	1	0	1	0	0	5	3	2	0	3	0	1
Mesa Community College	1	1	0	0	1	0	1	2	1	1	0	1	0	0
Southern Virginia University	5	4	1	0	4	0	2	0	0	0	0	0	0	0
Treasure Valley Community College	0	0	0	0	0	0	0	0	0	0	0	0	0	0
University of Idaho	0	0	0	0	0	0	0	1	1	0	0	1	0	0
Western Wyoming Community College	0	0	0	0	0	0	0	3	3	0	0	3	0	3
Total	13	10	3	0	10	0	3	16	13	3	0	13	0	5

Transfer Market Distribution

July 27, 2007

Summer 2007



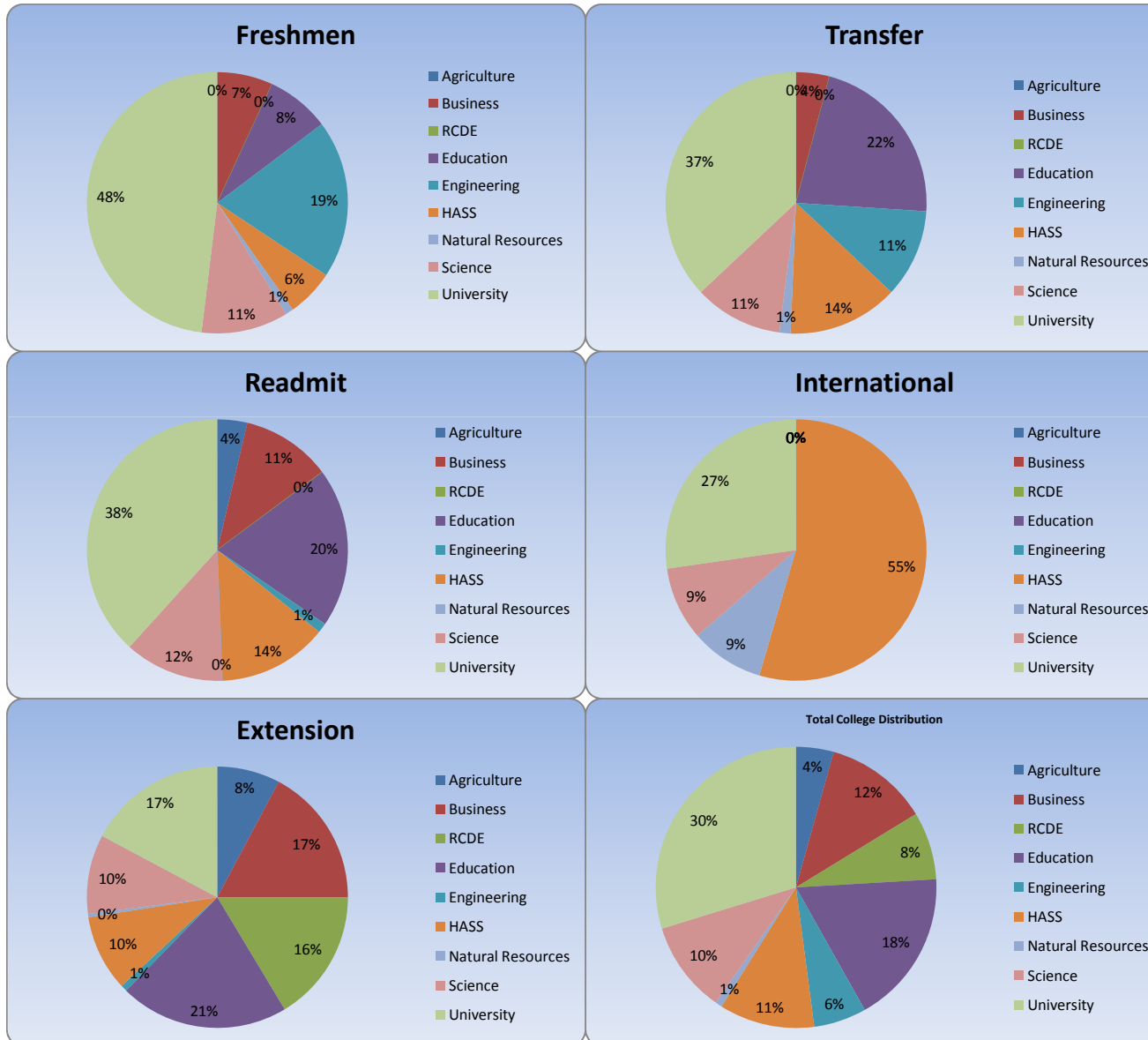
College Profile
July 27, 2007
Summer 2007

		Summer 2007							Summer 2006						
		Total							As of 7/28/2006						
		Total	Complete	Incomplete	Evaluation	Admitted	Denied	Enrolled	Total	Complete	Incomplete	Evaluation	Admitted	Denied	Enrolled
Freshmen	Agriculture	3	3	0	0	2	1	0	5	5	0	0	5	0	1
	Business	10	8	2	0	8	0	7	5	3	2	0	3	0	1
	RCDE	0	0	0	0	0	0	0	0	0	0	0	0	0	0
	Education	16	14	2	0	12	2	8	29	22	7	0	22	0	12
	Engineering	38	36	2	0	35	1	20	19	18	1	1	17	0	10
	HASS	24	19	5	0	19	0	6	20	17	3	0	14	3	4
	Natural Resources	2	0	2	0	0	0	1	2	1	1	0	1	0	1
	Science	23	19	4	0	19	0	11	23	21	2	0	20	1	9
	University	103	93	10	0	84	9	49	89	76	13	0	73	3	40
Total	219	192	27	0	179	13	102	192	163	29	1	155	7	78	
Transfer	Agriculture	4	3	1	0	3	0	0	4	4	0	0	4	0	2
	Business	8	6	2	0	3	3	3	12	8	4	1	6	1	2
	RCDE	0	0	0	0	0	0	0	0	0	0	0	0	0	0
	Education	38	32	6	0	30	2	16	45	36	9	0	36	0	20
	Engineering	18	15	3	0	14	1	8	16	13	3	1	12	0	9
	HASS	23	20	3	1	19	0	10	31	25	6	0	25	0	12
	Natural Resources	3	3	0	0	3	0	1	4	4	0	0	2	2	0
	Science	16	12	4	0	12	0	8	40	34	6	0	32	2	21
	University	57	48	9	0	45	3	27	49	42	7	0	39	3	24
Total	167	139	28	1	129	9	73	201	166	35	2	156	8	90	
Readmit	Agriculture	4	4	0	0	4	0	3	4	2	2	0	2	0	2
	Business	16	15	1	0	14	1	9	24	21	3	3	15	3	9
	RCDE	0	0	0	0	0	0	0	0	0	0	0	0	0	0
	Education	30	29	1	0	28	1	16	36	35	1	2	32	1	23
	Engineering	2	1	1	0	1	0	1	5	5	0	0	4	1	3
	HASS	24	24	0	0	23	1	11	28	26	2	1	25	0	13
	Natural Resources	0	0	0	0	0	0	0	2	2	0	0	2	0	1
	Science	15	14	1	0	13	1	10	30	27	3	1	25	1	19
	University	68	63	5	3	58	2	31	47	41	6	1	39	1	18
Total	159	150	9	3	141	6	81	176	159	17	8	144	7	88	
International	Agriculture	2	1	1	0	1	0	0	0	0	0	0	0	0	0
	Business	1	1	0	0	1	0	0	0	0	0	0	0	0	0
	RCDE	0	0	0	0	0	0	0	0	0	0	0	0	0	0
	Education	1	0	1	0	0	0	0	1	1	0	0	1	0	1
	Engineering	1	0	1	0	0	0	0	1	1	0	0	1	0	1
	HASS	15	14	1	0	14	0	6	35	34	1	0	34	0	24
	Natural Resources	1	1	0	0	1	0	1	0	0	0	0	0	0	0
	Science	2	1	1	0	1	0	1	3	2	1	0	2	0	0
	University	6	5	1	0	5	0	3	6	5	1	1	4	0	2
Total	29	23	6	0	23	0	11	46	43	3	1	42	0	28	
Extension	Agriculture	28	28	0	0	28	0	19	23	21	2	0	21	0	16
	Business	89	71	18	1	69	1	42	70	55	15	0	54	1	37
	RCDE	68	68	0	0	68	0	40	64	64	0	0	64	0	36
	Education	100	82	18	1	79	2	51	85	71	14	3	64	4	49
	Engineering	10	7	3	0	7	0	2	4	3	1	0	3	0	2
	HASS	41	36	5	2	34	0	23	25	18	7	2	16	0	14
	Natural Resources	3	2	1	0	1	1	1	3	2	1	0	2	0	1
	Science	43	35	8	2	33	0	24	43	30	13	1	28	1	22
	University	96	72	24	3	64	5	42	69	54	15	0	52	2	41
Total	478	401	77	9	383	9	244	386	318	68	6	304	8	218	

College Distribution

July 27, 2007

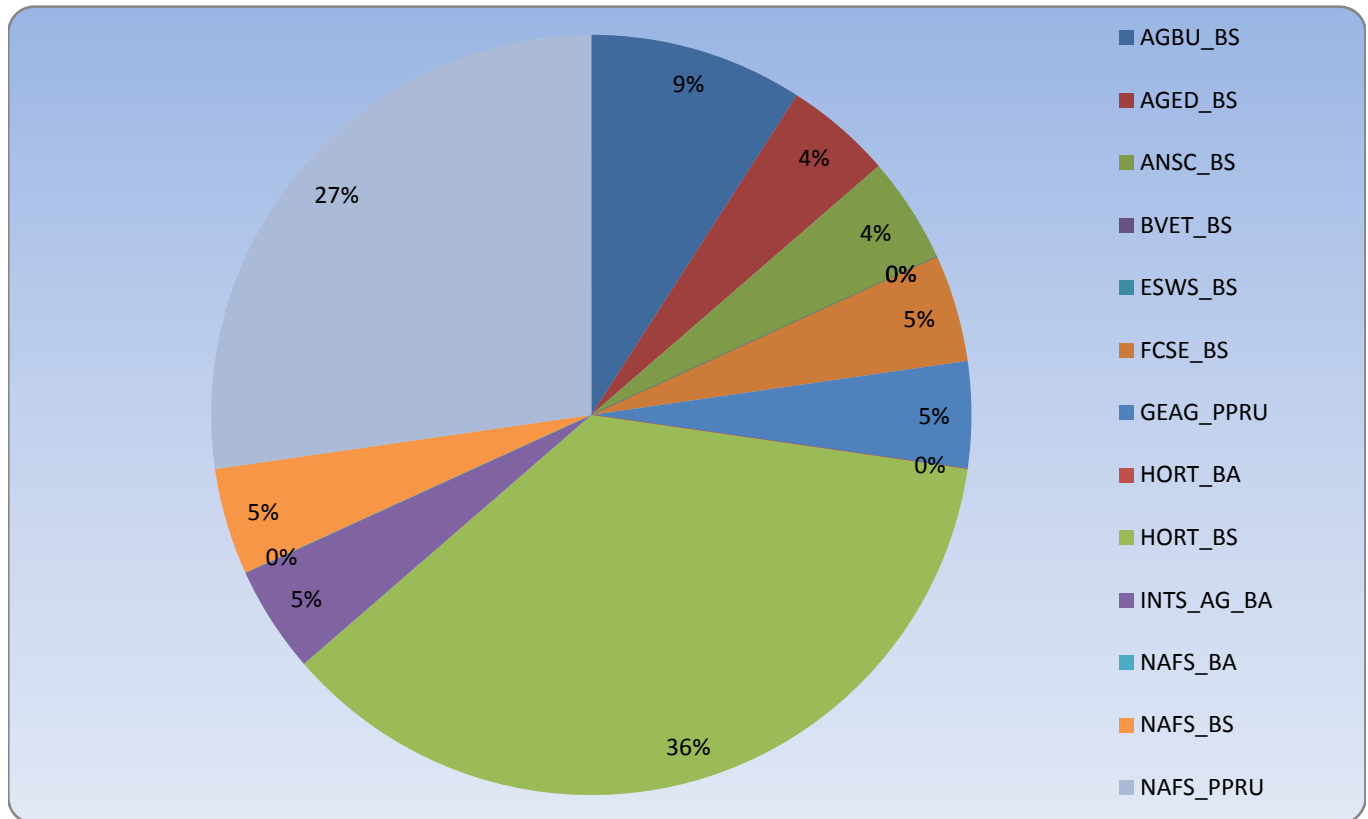
Summer 2007



College of Agriculture

July 27, 2007
Summer 2007

Summer 2007 Total							
	Total	Complete	Incomplete	Evaluation	Admitted	Denied	Enrolled
AGBU_BS	3	3	0	0	3	0	2
AGED_BS	1	1	0	0	1	0	1
ANSC_BS	3	3	0	0	2	1	1
BVET_BS	2	2	0	0	2	0	0
ESWS_BS	1	1	0	0	1	0	0
FCSE_BS	2	2	0	0	2	0	1
GEAG_PPRU	1	1	0	0	1	0	1
HORT_BA	1	1	0	0	1	0	0
HORT_BS	14	14	0	0	14	0	8
INTS_AG_BA	1	1	0	0	1	0	1
NAFS_BA	2	2	0	0	2	0	0
NAFS_BS	3	1	2	0	1	0	1
NAFS_PPRU	8	8	0	0	8	0	6

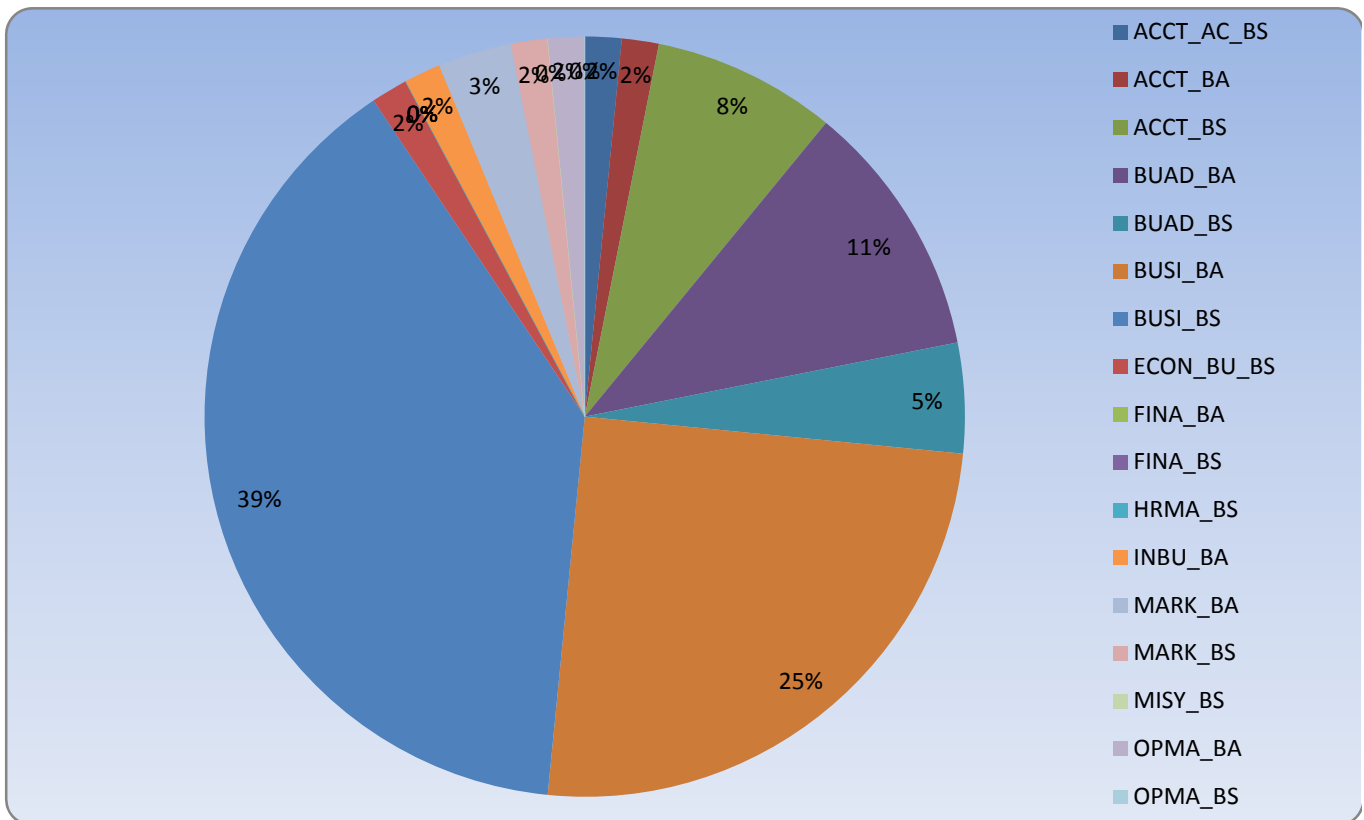


College of Business

July 27, 2007

Summer 2007

	Summer 2007						
	Total						
	Total	Complete	Incomplete	Evaluation	Admitted	Denied	Enrolled
ACCT_AC_BS	1	1	0	0	1	0	1
ACCT_BA	2	2	0	0	2	0	1
ACCT_BS	6	5	1	0	5	0	5
BUAD_BA	9	7	2	0	6	1	7
BUAD_BS	7	7	0	0	6	1	3
BUSI_BA	30	22	8	0	22	0	16
BUSI_BS	50	45	5	0	44	1	25
ECON_BU_BS	3	3	0	0	3	0	1
FINA_BA	1	1	0	0	0	1	0
FINA_BS	1	0	1	0	0	0	0
HRMA_BS	2	0	2	0	0	0	0
INBU_BA	1	1	0	0	1	0	1
MARK_BA	5	3	2	0	3	0	2
MARK_BS	3	3	0	0	3	0	1
MISY_BS	2	2	0	1	1	0	0
OPMA_BA	1	1	0	0	0	1	1
OPMA_BS	2	0	2	0	0	0	0



Regional Campuses & Distance Education

July 27, 2007

Summer 2007

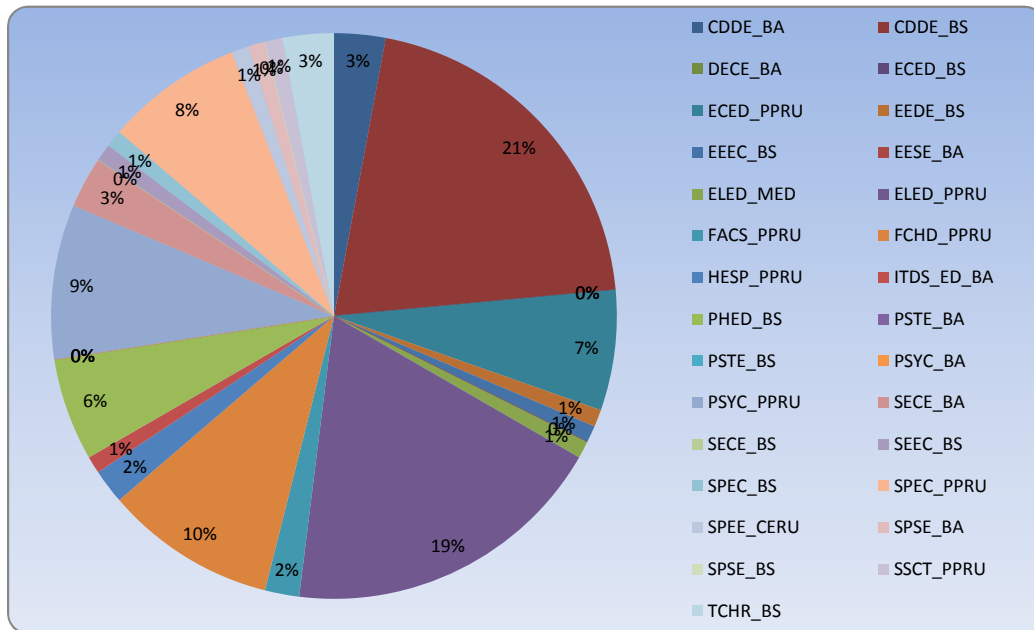
	Summer 2007						
	Total	Complete	Incomplete	Evaluation	Admitted	Denied	Enrolled
GENS_CI_PPRU	69	69	0	0	69	0	40

College of Education

July 27, 2007

Summer 2007

	Summer 2007						
	Total	Complete	Incomplete	Evaluation	Admitted	Denied	Enrolled
CDDE_BA	9	5	4	0	5	0	3
CDDE_BS	28	26	2	0	26	0	21
DECE_BA	1	1	0	0	1	0	0
ECED_BS	1	1	0	0	1	0	0
ECED_PPRU	14	11	3	0	9	2	7
EEDE_BS	1	1	0	0	1	0	1
EEEC_BS	1	1	0	0	1	0	1
EESE_BA	1	1	0	0	1	0	0
ELED_MED	1	1	0	0	1	0	1
ELED_PPRU	47	40	7	0	38	2	19
FACS_PPRU	2	2	0	0	1	1	2
FCHD_PPRU	15	14	1	1	13	0	10
HESP_PPRU	7	6	1	0	5	1	2
ITDS_ED_BA	1	1	0	0	1	0	1
PHED_BS	8	8	0	0	8	0	6
PSTE_BA	1	0	1	0	0	0	0
PSTE_BS	1	0	1	0	0	0	0
PSYC_BA	1	1	0	0	1	0	0
PSYC_PPRU	27	20	7	0	20	0	9
SECE_BA	4	4	0	0	4	0	3
SECE_BS	3	3	0	0	3	0	0
SEEC_BS	1	1	0	1	0	0	1
SPEC_BS	1	1	0	0	1	0	1
SPEC_PPRU	15	13	2	0	13	0	8
SPEE_CERU	1	1	0	0	1	0	1
SPSE_BA	3	3	0	0	2	1	1
SPSE_BS	1	1	0	0	1	0	0
SSCT_PPRU	2	2	0	0	2	0	1
TCHR_BS	4	4	0	1	3	0	3

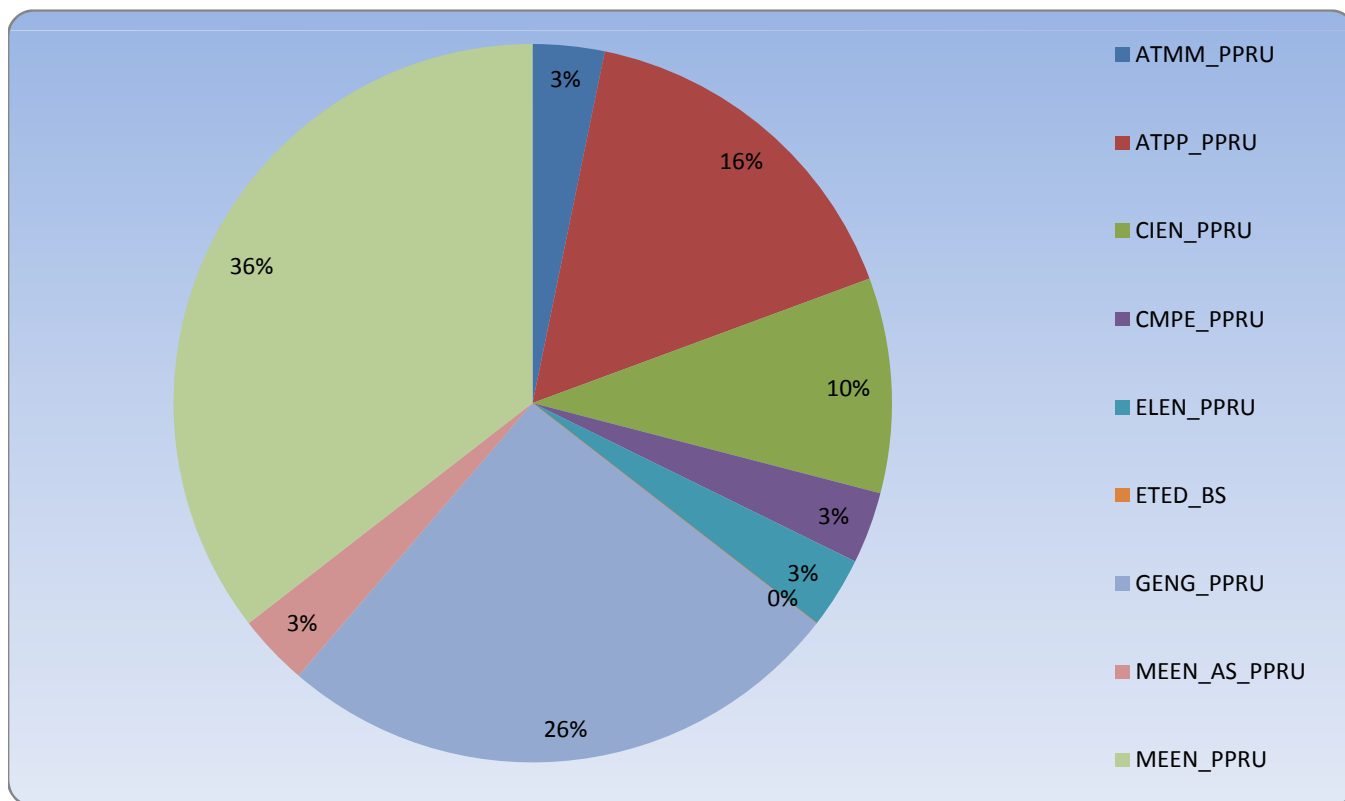


College of Engineering

July 27, 2007

Summer 2007

	Summer 2007						
	Total	Complete	Incomplete	Evaluation	Admitted	Denied	Enrolled
ATMM_PPRU	3	3	0	0	3	0	1
ATPP_PPRU	10	8	2	0	8	0	5
CIEN_PPRU	5	5	0	0	5	0	3
CMPE_PPRU	2	2	0	0	2	0	1
ELEN_PPRU	3	2	1	0	2	0	1
ETED_BS	4	3	1	0	3	0	0
GENG_PPRU	15	14	1	0	14	0	8
MEEN_AS_PPRU	2	2	0	0	1	1	1
MEEN_PPRU	26	21	5	0	20	1	11

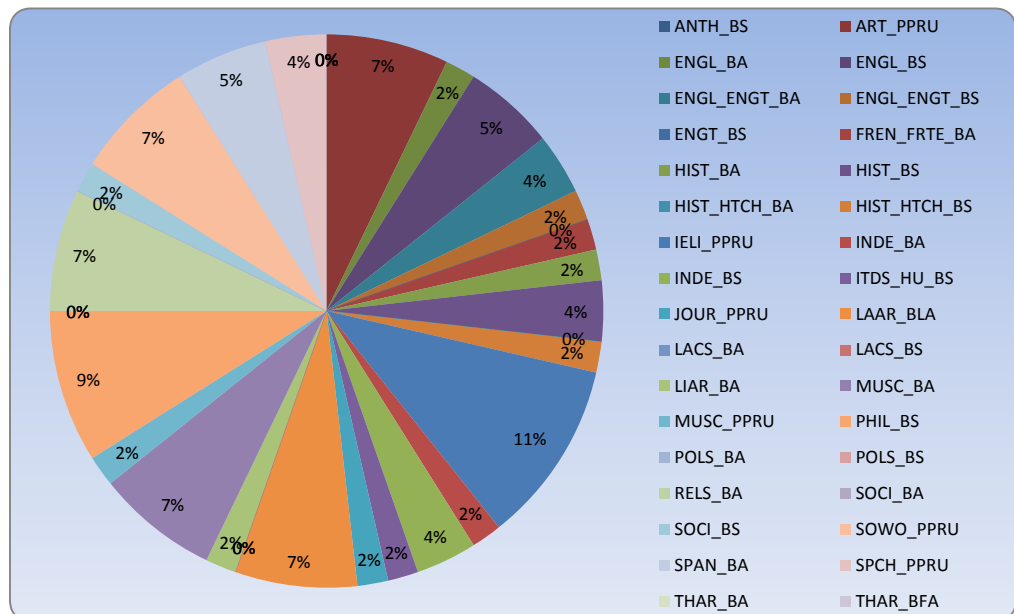


College of Humanities, Arts, and Social Sciences

July 27, 2007

Summer 2007

	Summer 2007						
	Total	Complete	Incomplete	Evaluation	Admitted	Denied	Enrolled
ANTH_BS	3	3	0	0	3	0	0
ART_PPRU	9	8	1	0	8	0	4
ENGL_BA	4	1	3	0	1	0	1
ENGL_BS	4	3	1	0	3	0	3
ENGL_ENGT_BA	4	3	1	1	2	0	2
ENGL_ENGT_BS	1	1	0	0	1	0	1
ENGT_BS	1	1	0	0	1	0	0
FREN_FRTE_BA	1	1	0	0	1	0	1
HIST_BA	6	3	3	0	3	0	1
HIST_BS	3	3	0	0	3	0	2
HIST_HTCH_BA	1	1	0	0	1	0	0
HIST_HTCH_BS	2	2	0	0	2	0	1
IELI_PPRU	15	14	1	0	14	0	6
INDE_BA	5	5	0	0	5	0	1
INDE_BS	3	3	0	0	3	0	2
ITDS_HU_BS	4	4	0	0	4	0	1
JOUR_PPRU	4	4	0	0	4	0	1
LAAR_BLA	4	4	0	0	4	0	4
LACS_BA	1	1	0	0	1	0	0
LACS_BS	2	1	1	0	1	0	0
LIAR_BA	8	7	1	0	7	0	1
MUSC_BA	1	1	0	0	1	0	4
MUSC_PPRU	9	9	0	0	9	0	1
PHIL_BS	1	1	0	0	1	0	5
POLS_BA	1	1	0	0	1	0	0
POLS_BS	6	6	0	0	6	0	0
RELS_BA	1	1	0	0	1	0	4
SOCI_BA	1	1	0	0	1	0	0
SOCI_BS	7	7	0	0	7	0	1
SOWO_PPRU	9	7	2	0	7	0	4
SPAN_BA	3	3	0	0	2	1	3
SPCH_PPRU	1	1	0	0	1	0	2
THAR_BA	1	1	0	0	1	0	0
THAR_BFA	1	1	0	1	0	0	0

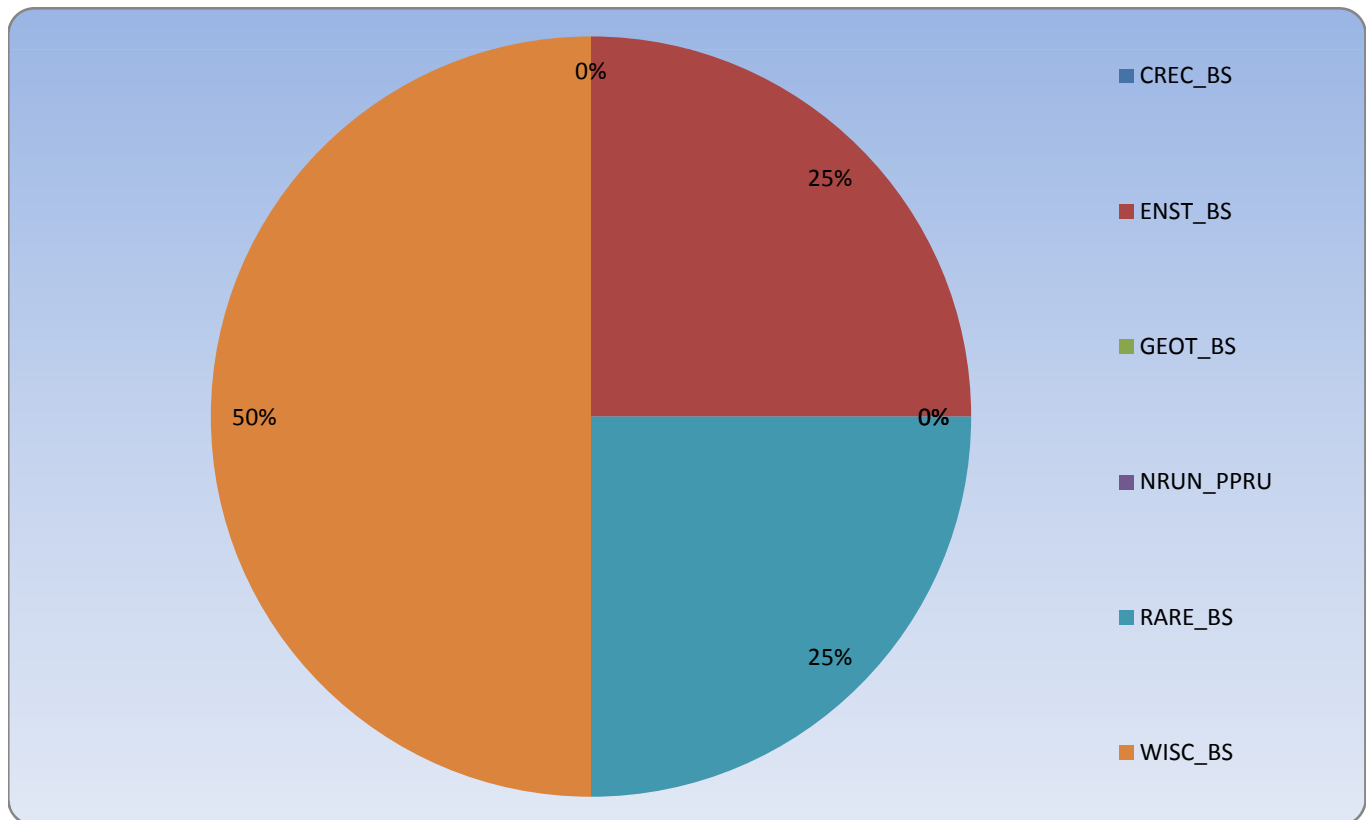


College of Natural Resources

July 27, 2007

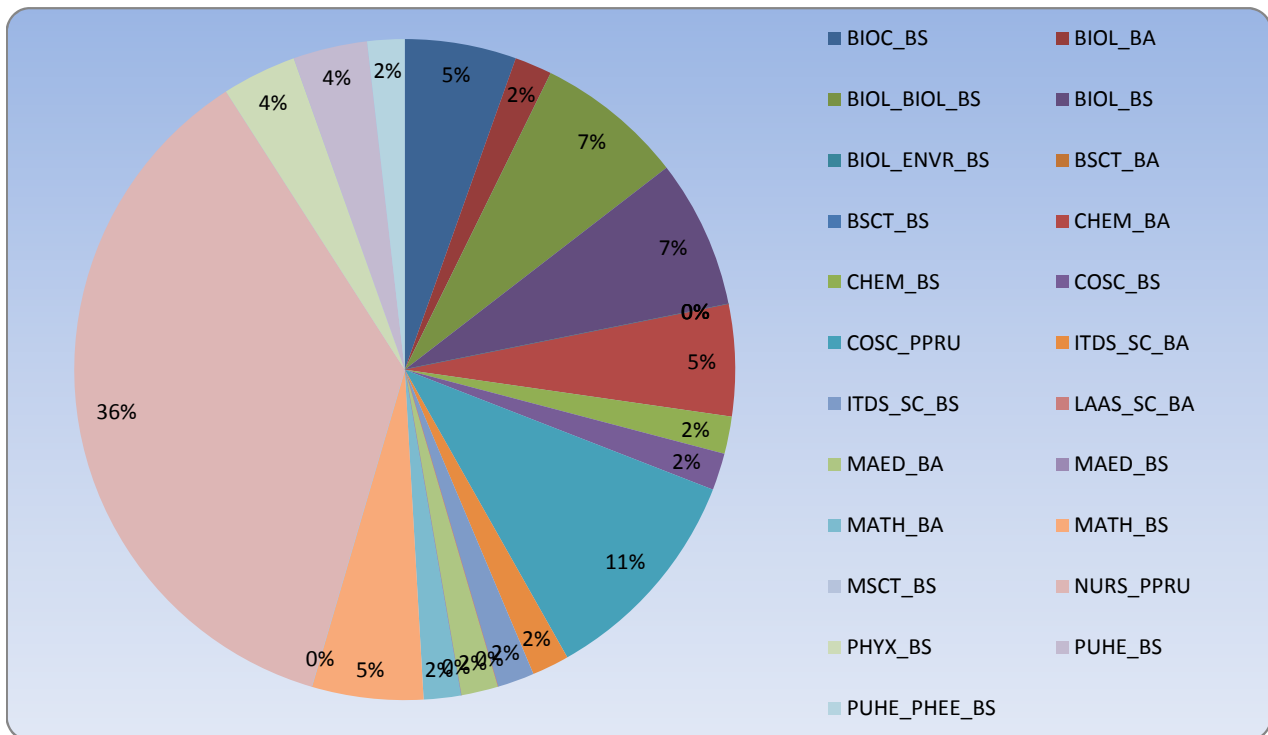
Summer 2007

	Summer 2007						
	Total	Complete	Incomplete	Evaluation	Admitted	Denied	Enrolled
CREC_BS	1	1	0	0	1	0	0
ENST_BS	1	1	0	0	1	0	1
GEOT_BS	1	1	0	0	1	0	0
NRUN_PPRU	1	1	0	0	1	0	0
RARE_BS	1	1	0	0	1	0	1
WISC_BS	4	1	3	0	0	1	2



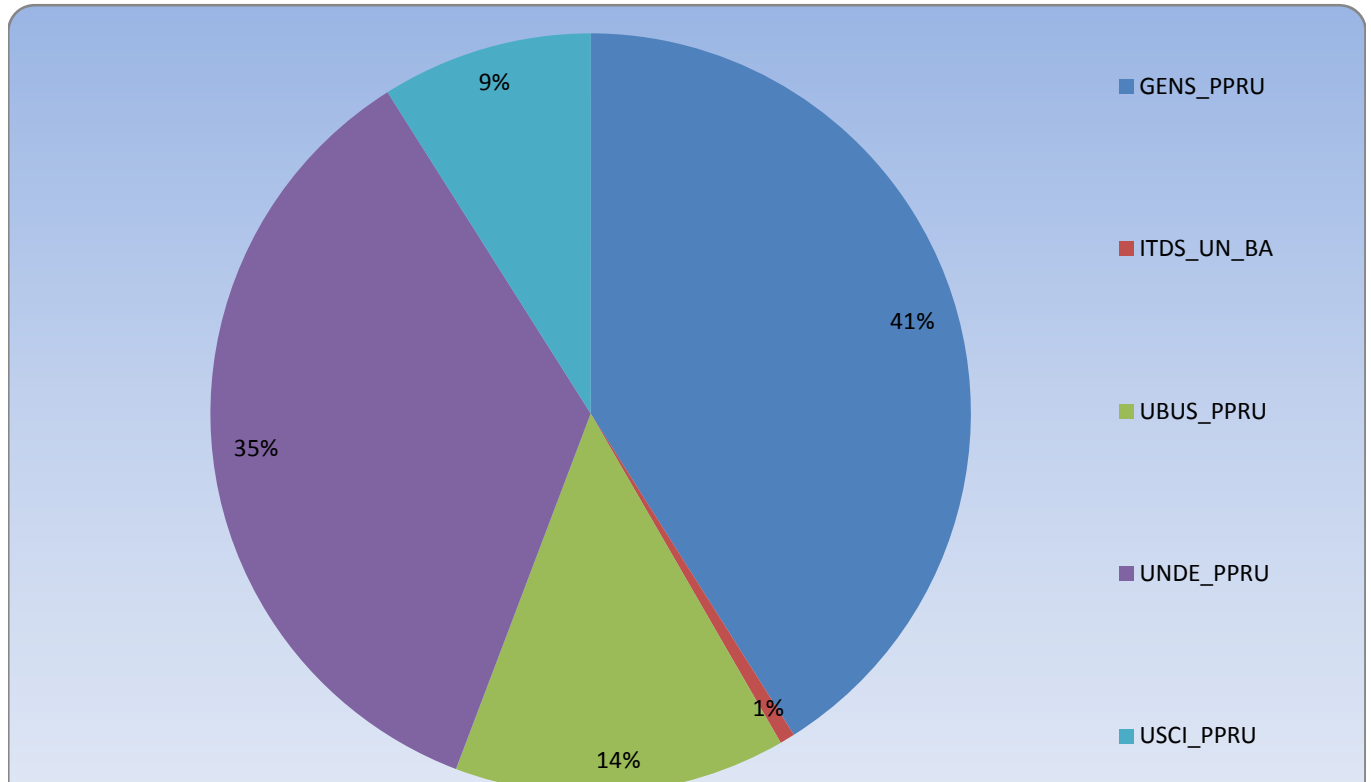
College of Science
July 27, 2007
Summer 2007

	Summer 2007						
	Total						
	Total	Complete	Incomplete	Evaluation	Admitted	Denied	Enrolled
BIOC_BS	4	4	0	0	4	0	3
BIOL_BA	1	1	0	0	1	0	1
BIOL_BIOL_BS	9	8	1	0	7	1	4
BIOL_BS	5	4	1	0	4	0	4
BIOL_ENVR_BS	1	1	0	0	1	0	0
BSCT_BA	1	1	0	0	1	0	0
BSCT_BS	2	1	1	0	1	0	0
CHEM_BA	3	2	1	0	2	0	3
CHEM_BS	3	3	0	0	3	0	1
COSC_BS	1	1	0	0	1	0	1
COSC_PPRU	16	15	1	0	15	0	6
ITDS_SC_BA	1	1	0	0	1	0	1
ITDS_SC_BS	2	2	0	0	2	0	1
LAAS_SC_BA	1	1	0	0	1	0	0
MAED_BA	1	1	0	0	1	0	1
MAED_BS	1	0	1	0	0	0	0
MATH_BA	1	1	0	0	1	0	1
MATH_BS	4	3	1	0	3	0	3
MSCT_BS	1	0	1	0	0	0	0
NURS_PPRU	39	30	9	2	28	0	20
PHYX_BS	3	2	1	0	2	0	2
PUHE_BS	2	2	0	0	2	0	2
PUHE_PHEE_BS	3	1	2	0	1	0	1



University Studies July 27, 2007 Summer 2007

Summer 2007 Total							
	Total	Complete	Incomplete	Evaluation	Admitted	Denied	Enrolled
GENS_PPRU	125	110	15	3	93	14	64
ITDS_UN_BA	1	1	0	0	1	0	1
UBUS_PPRU	59	57	2	0	57	0	22
UNDE_PPRU	129	98	31	5	88	5	55
USCI_PPRU	24	23	1	1	22	0	14



GLOSSARY

Total	All applications received for particular student type. Sum of incomplete, evaluation, admitted, and denied.	
Incomplete	Applications that have not been evaluated and are missing checklist items.	
Evaluation	Complete applications that do not have a decision and are being evaluated by processor, referral, or committee.	
Admitted	Students who have been offered acceptance to the university.	
Denied	Students not accepted to USU main campus.	
Complete Applications	Applications that have are able to have a decision made. Sum of evaluation, admitted, and denied.	
Enrolled	Students who are enrolled for any number of credits above zero.	
Resident	Students who have been determined to have Utah residency for tuition purposes.	
Non-resident	Students who have been determined to have out-of-state residency for tuition purposes.	
Undetermined	Students who have not had a residency evaluation for tuition purposes.	
International	Students who have been determined to have international residency for tuition purposes.	
Incomplete Rate	$\text{Incomplete} / \text{Total}$	Percent of incomplete applications from total applications.
Evaluation Rate	$\text{Evaluation} / \text{Complete Applications}$	Percent of applications in evaluations from complete applications.
Admitted Rate	$\text{Admitted} / \text{Complete Applications}$	Percent of admitted applications from complete applications.
Denied Rate	$\text{Denied} / \text{Complete Applications}$	Percent of denied applications from complete applications.
Complete Applications Rate	$\text{Complete Applications} / \text{Total}$	Percent of complete applications from total applications.
Yield (Enrolled Rate)	$\text{Enrolled} / \text{Admitted}$	Percent of enrolled students from admitted applications.