

# Society for Range Management



## Utah Section Newsletter

Spring 2010

<http://www.usu.edu/range/index.htm>

*SRM Utah Section Newsletter*

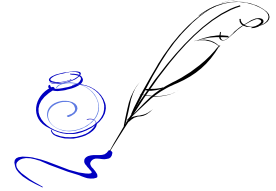
*Maxine Deeter Editor*

Chad Reid	President
Jeff Barnes	President Elect
Randy Russell	Past President
Ron Torgerson	Treasurer
Maxine Deeter	Secretary
Karl Ivory	Director
Mike Gates	Director
Burke Davenport	Director
Joe Jensen	So. Chapter President
Chad Horman	So. Chapter Pres-Elect
Linden Greenhalgh	No. Chapter President
Daniel Cook	No. Chapter Pres-Elect
	BYU Chapter President
Janessa Chew	USU Chapter Pres.
Mike Ralphs	Historian
Dana Truman	Information & Education
John Malechek	Membership
Jeff Barnes	Scholarship
Seth Ohms	Student Affairs
Bob Campbell	Range Excellence
Steve Monson	Awards
George Cook	Ut Ntl Rcrrs Field School
Jim Brown	Fund Raising Chair
Sherel Goodrich	Range Reference & Natural Areas



## Notes from the President

Chad Reid



It's a great privilege to serve as President of the Utah section; I hope I am up for the task. I am pleased to welcome Maxine Deeter as our new secretary. She has big shoes to fill following Ross Wright, however, she is off to a great start and is a pleasure to work with. I just returned from a very enjoyable International SRM meeting in Denver. It is always nice to rub shoulders with members of the society and take advantage of all the knowledge that is represented at the annual meeting. There was good news in Denver, the number of members in the parent society actually increased by 500. This is the first time in many years that membership has increased. The attendance at the meeting was also impressive with about 2,500 attending the joint SRM/Weed Science Society of America meeting. Utah was well represented at the meeting with many of our members in attendance. We were also spectacularly represented in the Awards ceremony with Dr. Jim Bowns receiving the Sustained Life Time Achievement Award, Dr. Bruce Roundy receiving the Outstanding Achievement Award and Dr. Tom Monaco receiving the Outstanding Young Professional Award. Congratulations to all, you make us all very proud to be members of the Utah Section.



The Utah section put in a bid for the 2014 annual meeting. However, we were beat out by the Florida section who will host the meeting in Orlando with help from the Southern section. It will be great to return to Orlando after a long absence, as the meeting was last held there in 1986. We are, however, in consideration for hosting the 2015 meeting; we plan on talking about this in depth at our Section Summer Meeting in Kanab in June. If you have comments about this or any other section business feel free to contact me by email at [chad.reid@usu.edu](mailto:chad.reid@usu.edu).

I am happy to report our section is in great shape with our finances in order and all of our committees functioning. However, we could always use more members, so please continue to extol the advantages of membership to your friends and colleagues.

Looking forward to a great year,

Chad

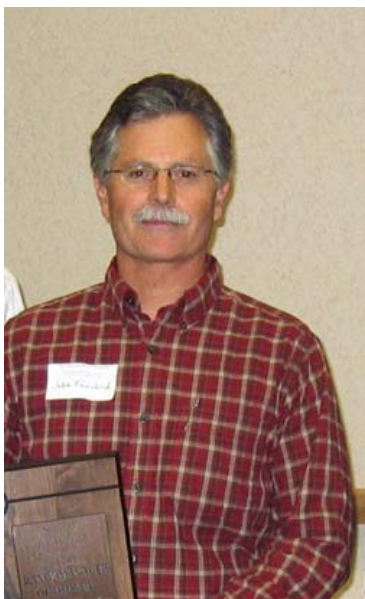


## RANGE MANAGER OF THE YEAR

### John Fairchild

John has earned three college degrees, a B.S. in Wildlife Science from Utah State University (1976), and M.S. (1978) and Doctorate Degrees (1991) from BYU in Wildlife and Range Resources.

John has spent his entire professional career employed with the Utah Division of Wildlife Resources. He began with the Division in 1978 as a biologist in Duchesne and later Salt Lake City focused on habitat restoration and implementing projects throughout the state. He next filled the post of habitat program manager in the Division's Central Region office in Springville. With this position he was integral in coordinating habitat restoration efforts throughout



the region and in managing over 100,000 acres of state wildlife management area's within the region. John went back to the Division's headquarters in Salt Lake City in 1998 to fill the role of the Division's Habitat Conservation Coordinator where he oversaw the Division's Great Basin Research Center and the Utah Big Game Range Trend Studies projects. John is currently the Regional Supervisor for the Division's Central Region office in Springville.

John's entire professional career has been devoted to range restoration, management, and conservation. Perhaps his greatest legacy is the integral role he played in acquiring support and funding to relocate and expand the Division's Great Basin Research Center in Ephraim while employed as the Habitat Conservation Coordinator in the Salt Lake City office. John's vision and persistence ultimately led to the Division constructing the GBRC which has allowed state and federal agencies, private landowners, and other partners to start and maintain the Watershed Restoration Initiative. From it's initial beginnings in the early 2000's to the present time, hundreds of thousands of acres of degraded, unproductive rangelands have been improved and restored through partnerships built as part of Utah's Watershed Restoration Initiative. The GBRC, which houses the Division's seed inventory warehouse and restoration equipment, makes the Watershed Restoration Initiative possible, and without John, we wouldn't have it. John also spent many years implementing restoration projects throughout Utah to improve rangeland health and wildlife habitat.

John has provided the Utah Division of Wildlife Resources and it's partners much needed leadership in developing and maintaining range management programs within their respective agencies. John has filled several management positions within DWR to oversee and expand programs integral to range management, watershed, and wildlife habitat improvement and conservation. John is a firm believer in good management of our natural resources, and has worked to build numerous partnerships with other agencies and the private sector to ensure good range management principles are practiced in the real world. Professionally, John has put into practice good range management principles as a habitat program manager in the Central Region and as the Habitat Conservation Coordinator at headquarters in Salt Lake City. John has been a leader in promoting range management as an applied science in Utah as evidenced by his role with the GBRC as described above.



*You cannot unsay a cruel word*



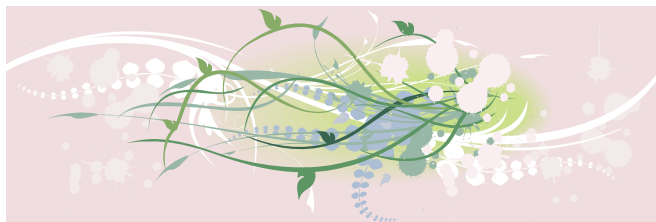
## OUTSTANDING YOUNG RANGE PROFESSIONAL

### Dana Truman

Education: Bachelors of Science in Wildlife Biology, minor in Rangeland Ecology (1999), Colorado State University. Dana is "outstanding" in her capacity to outreach in her professional activities. In a mere short time she has held 4 professional positions that put her the direct line of servicing those who depend on rangelands. These positions have sharpened her professional skills to solve rangelands problems and improve the livelihood and land-owners, and the health of critical rangeland natural resources. Dana has a diverse background in ecological processes. She applies scientific information to daily range management activities. She is currently working on a scientific study involving broom snakeweed—an excellent example of her desire to expand our current knowledge and share this with the public. Dana works well with other resource specialists in coming to a consensus or decision when it involves resource management. She enjoys applying her ecological knowledge to issues that may arise in the day-to-day administration of federal lands within the Price Field Office. She does not hesitate to "find the answer" from the experts. She has a good working relationship with other resource professionals throughout the western U.S.



Dana has been an active member of SRM since 1997. She regularly attends the National Annual Meetings and the Section Meetings. She has attended Advisory Council Meetings when section Presidents could not attend. She presented a poster at a national meeting showcasing the research and management projects she had led. Dana is actively engaged in the Utah section. For example she single-handedly served as the local arrangements coordinator for 2007 annual section meeting in Price, Utah. Dana also serves as Chair for the I&E committee. She played an active role in the development of the new website and electronic distribution of the quarterly section newsletter. Dana attends all important section meetings and offers helpful insights when dealing with important section business.



Good judgment comes from experience, and a lotta that comes from bad judgment



## RANCHER OF THE YEAR

### Willis and Sophia Hall

LAND RESOURCES (ACRES) - Native range: Private 8,500 State Trust Lands 8,000 BLM 85,000 - 90,000 Total Acreage 106,500. LIVESTOCK NUMBERS - 423 head of cattle.

COMMUNITY ACTIVITIES - Both Willis and Sophia are very active in the local community, serving as the Western Iron County, Iron County Cattleman's Representatives, Sophia currently serves on the Farm Service Agency County Committee and has completed her term on the Iron County Planning Commission. Willis is currently serving on the Western Iron County Coordinating Council. Both are members of the Southwest Adaptive Resource Management Committee which is our Sage Grouse Committee, As their lands contain the largest populations of Sage Grouse in Iron County they have been very important part of this committee. They have hosted numerous tours of their operation for SWARM and other groups interested in Sage Grouse conservation. Because of their strong conservation efforts Willis and Sophia were awarded Cooperator of the Year by the Enterprise and Iron Conservation District.



LAND MANAGMENT - The Hall's have made and continue to improve their land. They have treated many acres of their operation with Spike and have seeded many more acres. They have had great success seeding after wildfires in the area. Leading Willis to make the statement he has never met a fire that he didn't like. In addition to land treatment they have put great effort into their grazing management. They have worked hard to improve distribution of their animals by fencing, water development and livestock management. This year alone they have built four miles of fence put in a well and tapped into an existing spring development to better improve grazing distribution. They plan to build two more miles of fence in the near future. They believe in intense grazing for short periods followed by long rest periods to maintain and improve plant diversity and production. They are always looking for ways to better manage their operation. This year they became aware of the large rubber tire water troughs used extensively in Wyoming, they have already installed three on their operation plus one for a neighbor. They are so impressed with these troughs they plan to become a distributor in this area. All of these efforts have paid off in very productive and diverse rangelands that produce a good calf crop and lots of wildlife. Their ground has consistently supports deer, elk and other wildlife and has the largest population of Sage Grouse in Iron County testifying to their good management.

#### LIVESTOCK MANAGEMENT

Hall's practice a strong cross breeding program with their cattle. They prefer to cross Hereford bulls on Red Angus or Black Angus females. They believe that Hereford cattle have many positive traits although Herefords are getting harder to find. They like the beefiness of the Red Angus breed and also believe Black Angus have good genetics if you pick the right lines. They did use some Saler genetics early on to address some issues with Cancer eye in their cattle herd. Hall's are strong believers that home raised replacement heifers are best therefore they pull their best heifers for replacements in their cow herd, and will spend all summer watching these heifers to make sure they get the best replacements. They market their cattle through video auction; they stated this takes the pressure off of them to do the marketing allowing them to concentrate on other management activities. This also exposes their cattle to a wide range of buyers insuring them at top price. Their vaccination program is certified by the video auction making sure of strong acceptance of their cattle by buyers.

#### INNOVATIVE PRACTICES

The Halls have used solar well pumps to their great advantage. This new technology provides consistent water flow with low labor requirement. They put in another well with this technology just this year and commented it is working even better than they hoped.

## RANGE EXCELLENCE AWARD

The Utah Section's 2009 Range Excellence Award was presented to Preston Nutter Ranch of Carbon County, Utah owned by Hunt Oil Company with Blair and Kresha Eastman, Ranch Managers. The recognition was for improving and sustaining diverse rangelands and promoting healthy wildlife habitat through excellent management and treatments including fire, seeding, and integrated weed control.

Karl Ivory brought this nomination forward and did a great job. Two other tentative nominations were available for consideration because of the efforts of Steve Mosen and Chad Horman.

The Preston Nutter Ranch was established in 1902 by Preston Nutter on the West Tavaputs Plateau in Carbon County, Utah. The Preston Nutter Ranch was purchased by Hunt Oil Company in 1992. Ranch managers are Blair and Kresha Eastman.

The Nutter Ranch operation encompasses over 200,000 acres of rangeland, forest land, riparian areas, and farm land including 21,000 acres of deeded land, 7,000 acres of leased state land and 175,000 acres of BLM land within the Green River and Water Canyon grazing allotments managed by the BLM Green River District. The Green River allotment is divided into nine (9) pastures that include federal, state and deeded land. Cattle are able to move through these pastures starting in late winter and ending in early fall. Recent assessments show that the rangeland health standards are being met on over 90% of the federal lands. State and private lands are also in good range condition.

Over the last eight years, approximately 4,000 acres have been enhanced by way of sagebrush removal and fire rehabilitation and restoration. Large areas of the ranch received land treatments to enhance the critical sage grouse habitat found at the mid and high elevations of the ranch. The salvage logging of burned timber followed by seeding of the burned area was completed with great success. The ranch is specifically managed to sustain prime elk habitat within the ranch boundary.

A mix of land uses (livestock grazing, wildlife habitat, recreation, etc.) demonstrates diversified and sustained benefits. The ranch has the capacity for a large (1,000+) cattle operation. Currently, 250 cattle use the ranch on a year-round basis. A large elk herd is also sustained year-round on the ranch including BLM winter and spring range and summer and fall range on the higher elevation deeded land. The Nutter Ranch is managed as a Cooperative Wildlife Management Unit for big game hunting. The Range Creek wild horse herd management area (HMA) is within the ranch boundary on federal land with a herd size ranging from 75 - 150 horses. Periodic wild horse gathers help control herd size and help maintain good range condition.

The Nutter Ranch operation demonstrates both intensive and extensive management systems on forest land and mountain, foothill and riparian range types. Blair and Kresha have taken an aggressive role in noxious weed control. Coordination with the local Skyline Cooperative Weed Management Area has enabled the ranch to remain virtually noxious weed free. Small infestations of musk thistle and Canada thistle have been controlled through an integrated management approach using biological, mechanical and chemical control.

Blair and Kresha promote the use of range management principles and encouraged and supported their son Clint's participation in the Section's range summer camp in 2003 and 2004.

These are a few of the reasons that the Utah Section of the Society for Range Management recognized and congratulated Hunt Oil Company and Blair and Kresha Eastman, Ranch Managers, for excellence in range management.





## Cedar City BLM Specialist Receives Rangeland Management Specialist Recognition Award

Cedar City Field Office Rangeland Specialist, Dan Fletcher, has received Utah's nomination for the BLM's Rangeland Management Specialist Recognition Award. Each state nominates one individual and all nominees were recognized at the Society for Range Management International meeting in Denver in February 2010. Fletcher's award recognizes a host of accomplishments in the BLM range program including; work with permittees, fire rehabilitation, rangeland monitoring and mentoring. Support for the nomination came from all levels of BLM.



Dan has been a dedicated Rangeland Management Specialist for the BLM for nine years, four of which he has been the lead RMS for the Cedar City Field Office. In his role, he is recognized for his constant commitment to and enthusiasm for his profession by his peers, supervisors, and colleagues at all levels of the organization. Dan demonstrates his extraordinary skills and qualities in multiple arenas including: working with livestock grazing permittees, fire rehabilitation, monitoring, and mentoring of new employees; all of which have had a positive effect on range management in Utah. Dan has set an example of working with permittees on rangeland issues on a multitude of topics, as well as aligning comprehensive range management with mentoring of new rangeland management specialists.



Dan has been very energetic and capable in moving forward the term grazing permit renewal effort in the Cedar City Field Office. His energy and expertise have created an environment where the other range staff on his team, many of them new and inexperienced, have been able to follow his lead and

meet very ambitious and difficult term grazing permit renewal targets.

Dan's range management expertise and understanding were recently exhibited as he helped lead the effort to rehab and monitor the southern half of the Milford Flat Fire. This fire was the largest fire in recorded Utah history and presented a myriad of extreme logistic, technical, and environmental challenges.

His nomination form concluded with this statement: "With his dedication to his work, professional pride rather than personal pride, and consideration for his colleagues, Dan demonstrates exemplary qualities, skills, and true accomplishments which make him a natural choice for the Range Management Specialist Recognition Award."



# Student Activities

## Fall Section Meeting - November Cedar City



Britney Bosshardt with her father Dave as she receives recognition from George Cook, as the 2009 Top individual from the Utah Natural Resources Field School. The Utah SRM Section sponsored Britney's attendance at the international meeting in Denver in February. Other winners from range camp this year were Calli Covington and Angela Yardley



Combined Score winners Kassie Pucket, Kevin Costa and Daniel Zvirzdin

At right: Scholarship winners  
Chris Jorgansen and Levi Bennington  
Both of Utah State University  
Each award is for \$1,500  
There were seven applicants for the scholarships



Student Awards, Fall 2009		
PLANT ID COMPETITION	URME COMPETITION	OVERALL COMBINED SCORES
Top Individuals:	Top Individuals:	Individual:
1. Daniel Zvirzdin	1. Dan Zvirzdin	1. Dan Zvirzdin
2. Kevin Costa	2. Kevin Costa	2. Kevin Costa
Jordan Bybee	Chris Jorgenson	Kassie Puckett
Top Teams	Top Team:	Team:
1. BYU	1. BYU	1. BYU
2. UVU	2. USU	2. USU
3. USU		

---

## *Good-bye to Ross and Mary Jo Wight*



After many years of tireless service, this dynamic duo is retiring from the secretarial position of the Utah Section. Ross has kept the section and its leaders on track while Mary Jo recorded meeting minutes and handled other paperwork items. Their tireless service and wonderful organizational skills will be greatly missed—especially by the new secretary who will be vainly trying to fill those really big shoes. The Utah Section wishes Ross and Mary Jo the best in their “retirement”. We expect to see you at the meetings cheering everyone on!

Once more we give you a big THANK YOU!



---

## *The Changing of the Reins*



Outgoing President Randy Russell hands over the Utah Section “Reins” to new President Chad Reid as Past President Tom Monaco looks on.



Outgoing President Randy Russell (right) receives plaque for his service as Utah Section President from new President Chad Reid.



**UTAH SECTION SRM 2009 SUMMER FIELD TRIP REGISTRATION FORM**

June 3<sup>th</sup> and 4<sup>th</sup>, 2010, Kanab, Utah

Meet at the junction to Alton, UT on Highway 89 on June 3 at 10:00 AM

For those staying in Kanab we will leave at 9:00AM

Kanab Field Office area - Tour of vegetative treatments

Lunch and chuck wagon dinner on June 3 (included in registration)

June 4 Grand Staircase Escalante National Monument vegetative treatments

Name: \_\_\_\_\_ Member Non-Member (circle one)

Additional Spouse or Guest Name(s): \_\_\_\_\_

Address: \_\_\_\_\_  
Street City Zip Code

Phone Number or Email:

- Registration: \*\$40 per person (**Registration fees must be received by May 26, 2009**)
- \*\$30 Student Registration
- \$30 Later Registration and Day of Tour (**No Meals**)
- \*Includes lunch and chuck wagon dinner on June 3<sup>th</sup>.

Send registration form and payment to:

Ron Torgerson  
Trust Land Administration  
130 N Main  
Richfield, UT 84701

Make Checks payable to: Society for Range Management. Sorry no Credit Cards

Questions or suggestions please email Joe Jenson at [josephjenson@q.com](mailto:josephjenson@q.com)

Rooms at the Comfort Inn, (815 East Highway 89, Kanab, Utah 84741, Phone: (435) 644-8888), are reserved until May 19, 2010. Under SRM or Range Conference.





## Student Activities at International Meeting

### Brigham Young University Student Top Competitor in Denver

Daniel L. Zvirzdin took top honors in Denver in both URME and combined plant ID/URME. With a score of 232, Daniel placed first out of 209 participants in URME. He also placed first in the combined plant ID/URME competition.

The BYU team placed first out of 24 teams in the URME competition.



### Utah State University Club Does Well In Competitions in Denver

by

Janessa Chew

USU Range Club President 09-10

Utah State University did exceptionally well in competitions at the SRM meeting. The Plant ID team took 4th place, with team members: Kyler McCarrel, Elizabeth Goss, Makeda Trujillo, Jenny Addy, Steven Cox, and Spencer Ellison. Kyler placed 10th out of 109 contestants. The Rangeland Cup team took second place, with team members Larry Johnson, Makeda Trujillo, Jenny Addy and Halley Kartchner. There were eleven club members that took the URME test- Janessa Chew, Cari Forsgren, Laura Hansen, Levi Bennington, Larry Johnson, Chris Jorgensen, Casey Addy, Trent Staheli, Jeff Reese, Kyler McCarrel and Ailina Smith. Levi placed 16th out of 180 contestants. Chris Call and Fee Busby coached the teams.



If you find yourself in a hole, the first thing to do is stop diggin'!



## *National Awards*

### **Sustained Lifetime Achievement**

Awarded to

**Dr. James E. Bowns**



If there ever existed a position called “Mr. Range Management”, Dr. James E. Bowns would certainly wear that title. He has spent a long and exceptionally productive career teaching and inspiring students, assisting and educating ranchers and professional range managers through his extension work, conducting research on Utah’s rangelands, and providing expert advice and testimony to the U.S. Congress and several national task forces on a variety of vexing rangeland issues. The scope and significance of his contributions to any one of these would be considered a major career accomplishment for most of us. That he has been able to do so much in so many areas continues to amaze and astonish us who know and work with him.

Dr. Bowns has not simply taught range management; he has convinced generations of students that this is the career they were destined to follow. His artful teaching of plant taxonomy has made life-long “plant freaks” of many of them. Ranchers and managers who have benefited from his judgements and advice – and not always what they wanted to hear – return again and again for his aid. He unfailingly gives it with honesty, clarity and good humor.

Somehow, Dr. Bowns also finds time and energy to contribute substantially to his civic community through service on local hospital and livestock show boards, nature instruction of grade schoolers, and Bryce Canyon National Park Natural History Association.



### **Outstanding Achievement Award – Research and Academia**

Awarded to

**Dr. Bruce A. Roundy**

Dr. Bruce A. Roundy is a model of exceptional performance and balance in his profession as a university Professor of Range Management. Bruce has had great impact on many students over his career. As a faculty member of ten years at the University of Arizona and the last fifteen years at Brigham Young University, he has taught hundreds of undergraduates in range management related courses. Students regularly comment on the fact that Bruce is extremely well-grounded in his subject matters, often being a leading publisher in his field. His teaching prowess was recognized nationally in 2000 by SRM and RESC as he was awarded the Outstanding Undergraduate Teaching Award.

Bruce is also an accomplished researcher. He is widely known for his work with invasive weed species and rangeland restoration. He publishes regularly, averaging more than two peer-reviewed publication and generally five or more presentations each year. He has mentored and published with nearly 40 graduate students. His research program is well recognized nationally and his external research funding is an evidence of his reputation, having generated nearly \$3 million in external research funding over the past five years oriented to restoration of arid lands devastated by wildfire.

Bruce has always carried a heavy citizenship load. He has chaired the Department of Botany and Range Science at BYU, served on many other academic and service accreditation committees, Salt Lake City Annual Meeting Program Chair and many other professional group committees. For his outstanding achievement in teaching, research and service, SRM recognized Bruce A. Roundy.



## National Awards

### Outstanding Young Range Professional

Awarded to

#### Dr. Thomas A. Monaco

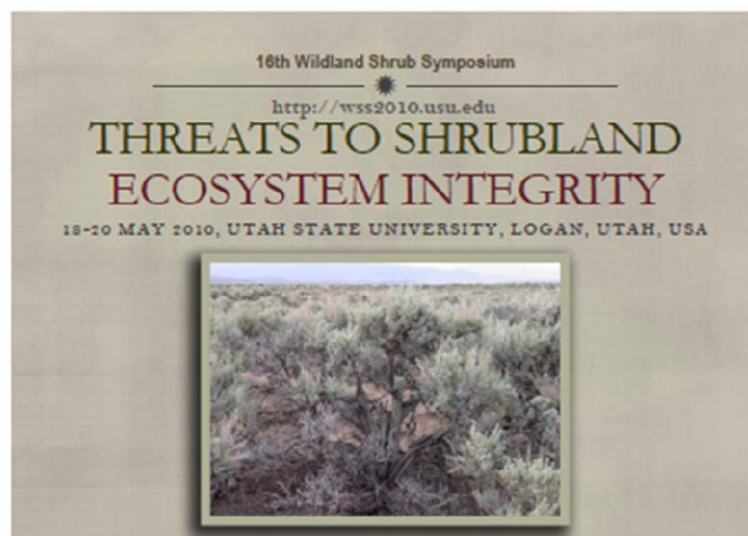
Dr. Thomas A. Monaco has made major advancements in our understanding of the physiological functions of rangeland plants in his position as range ecologist at the USDA-ARS Forage and Range Research Lab at Logan, UT. He used this knowledge to develop conceptual and quantitative models that linked impacts of physiological trait variation with ecosystem processes and properties. These approaches are useful for understanding how rangeland ecosystems can be managed to sustain ecosystem function, and how function can be restored in degraded, weed-infested systems. This framework is beneficial for improving community stability, invasion resistance, and soil protection on rangelands in the Intermountain West.



He is frequently sought after for his expert advice and collaboration, and has given numerous invited presentations during the last five years. He currently collaborates on two comprehensive research and demonstration programs (USDA-IFAFS and USDA-ARS Area Wide Program) across a four-state area. This work examines methods and plant materials to repair degraded rangelands dominated by invasive plants.

Dr. Monaco served as President of the SRM Utah Section and was on the Editorial Board of *Rangelands*. He organized symposia, made presentations, and judged graduate student competitions at SRM annual meetings. He is currently Chair of the SRM Rangeland Invasive Species Committee and Chair of the 2010 Wildland Shrub Symposium, which will be held in Logan, UT. His comprehensive research activities and active outreach efforts are clear reflections of his widely recognized contributions in the field of range ecology. Dr. Monaco is truly one of SRM's outstanding Young Range Professionals.

## Upcoming Event



For more information go to <http://wss2010.usu.edu>



## Range Camp 2010

It's time to start spreading the word about the 2010 Range Camp!

Range Camp is an intensive 4-day camp held at the Gooseberry Forest Service Campground in Salina Canyon. This year's camp will be held August 2-5, 2010. The cost of the camp is just \$100, which includes meals and materials. The camp is open to 25 high school students age 15 and older. The top two individuals will receive an expense paid trip to the International Society for Range Management Convention which will be held in early February 2011 in Billings, Montana. There they will have the opportunity to participate in the High School Youth Forum with other students from around the country.

The Field School offers students a background in ecological principles and the tools used to measure the health of our rangelands, as well as an understanding of the resource management process. A great deal of time is spent in learning and discussing the roles of humans in natural resources, with special attention given to the process of resolving conflict. The Field School includes a balance of outdoor activities, hikes, and classroom study.

Instructors for the school are Society for Range Management members from University faculty, agency professionals, and private industry from around the state.

Sponsorships are available through various county and state agencies, such as Conservation District Boards, Farm Bureau, school districts, FFA chapters, and others involved in conservation of our Natural Resources.

For more information, Contact George Cook, PO Box 505, Wellington, UT 84542 Phone: 435 537-0937, Cell: 435 820-0056, email: [gscook@emerytelcom.net](mailto:gscook@emerytelcom.net). More information, including applications, can be found at the Utah SRM webpage at:

<http://www.usu.edu/range/upcomingevents/unrfs.htm>





Check out our Utah Section website!



**Society for Range Management - UTAH SECTION**

HOME NEWS UPCOMING EVENTS OFFICERS COMMITTEES LINKS ABOUT SRM

Current News  
Past Newsletters

**Welcome to the Utah Section of  
The Society for Range Management**

The Society for Range Management is the professional society dedicated to supporting persons who work with rangelands and have a commitment to their sustainable use. Rangelands comprise almost one-half of all the lands in the world. They are extremely important to society for the goods and services they provide. SRM is dedicated to the conservation and sustainable management of rangelands for the benefit of current societies and for future generations.

<http://www.usu.edu/range/index.htm>



## Membership Information

Membership in the Society for Range Management is open to anyone engaged in or interested in any aspect of the study, management, or use of rangelands. Membership rights and privileges include: voting, committee service, nomination and election to offices, subscription to *Rangelands* journal and the *Rangeland News* (formerly Member Resource News), discounted prices for publications, meeting registration fees, page charges and certification fees. For more information on membership in SRM, or to request a Membership Application, please contact Lesley Radtke, Director of Membership, 303-986-3309, or email [LRadtke@rangelands.org](mailto:LRadtke@rangelands.org).

### Membership Applications Forms:

[Online Membership Application](#)

[Printable New Member Application \(pdf\)](#)

[Printable New Member Student Application \(pdf\)](#) - The New Member Application with the Student Verification Form

[Student Verification Form \(pdf\)](#)

[Printable International Application \(pdf\)](#)

[Printable International Application Country List \(pdf\)](#)