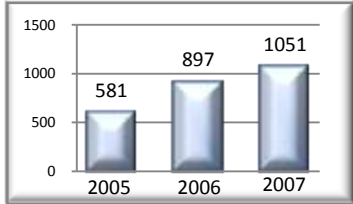
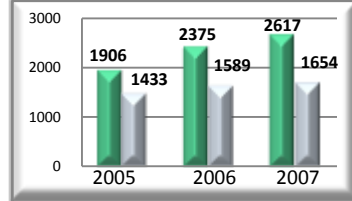


Retention & First-Year Experience -- Dashboard Data (June 2008)

Parents attending orientation

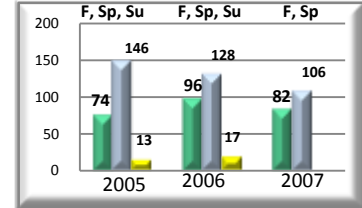


Total first-year students attending Connections

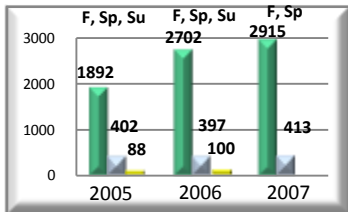


■ First-year students
■ Number of first-year students enrolled in all sections of Connections

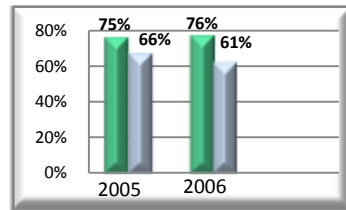
Number of students suspended



Students attending SOAR

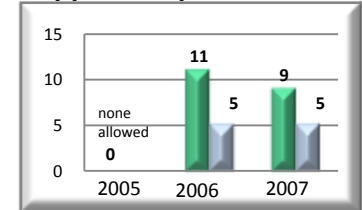


Retention rate for students who completed Connections



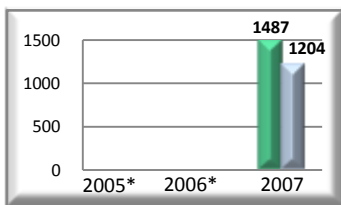
■ Students who completed Connections
■ Students who did not complete Connections

Number of students who appeal suspension



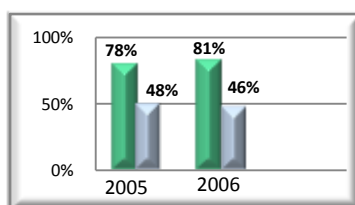
■ Appeals submitted
■ Appeals granted

Students returning from leave of absence



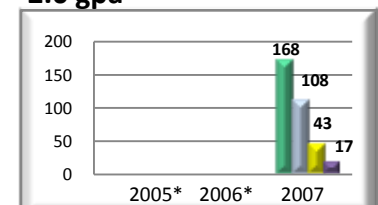
■ Students who were expected to return in 2007
■ Students who actually returned in 2007

Connections GPA retention rate



■ Rate for students who received a B or higher in Connections
■ Rate for students who received a B- or lower in Connections

Student who were readmitted with less than 2.0 gpa



■ Number of admits
■ Students in good standing
■ Students who broke contract
■ Students never enrolled

*data not available

