



**McMillan Spring Stewardship
Henry Mountains
Utah BLM
Project Summary**

Funded through the American Recovery and Reinvestment Act of 2009 (ARRA), the McMillan Spring Stewardship project will treat up to 1,200 acres of Public Lands on the Henry Mountains with the primary purposes of “forest and ecosystem health.” Project objectives include: reduce the risk of uncharacteristic and extreme-behavior wildfire; reduce stand densities in ponderosa pine, mixed conifer, and pinyon-juniper forest types; and improve wildlife habitat through the above vegetation management activities. The project is to be implemented with a stand-alone IDIQ (indefinite delivery, indefinite quantity) stewardship contract. Three years of task orders have been identified.

Silvicultural prescriptions were developed for the various species groups located within the project area. BLM crews laid out treatment units for the base-year task order in fall of 2009. Commercial sawtimber trees were marked and 100% cruised. Option-year treatments will be laid out in spring/early summer 2010. Designation-by-description prescriptions are being used for pre-commercial thinning in ponderosa pine sub-sawtimber groups, aspen, and pinyon-juniper. A summary of the marking guidelines follows.

**Ponderosa pine seedling / sapling groups – Keen Class 1
(trees less than 8” dbh).**

Where pockets of ponderosa pine seedling/saplings are found, ponderosa pine trees will be thinned to a spacing of 16 to 20 feet between trees. Best trees will be retained: these will be dominant trees, free of obvious defect and deformity. Trees with dwarf mistletoe will be cut. Slash will be lopped and scattered per contract provisions away from leave trees. The contractor will be responsible to identify cut and leave trees in this category – trees will not be marked.





Ponderosa pine pole and small sawtimber groups – Keen Classes 2 and 3 (“blackjack” pine).

These are trees generally between 8” and 16” dbh and still have vigorously growing tops. These may be considered merchantable sawtimber. Trees in this category will be thinned to approximately 60 square feet of basal area to alleviate crown competition. The best trees should be retained; these should be trees in the dominant and co-dominant classes, free of obvious defect and deformity. Trees with dwarf mistletoe in excess of 2 will be cut unless there are no other ponderosa pine within 60 feet of the tree. Small groups of 2-4 trees with interlocking crowns may retained where all trees are co-dominant or dominant class trees. Merchantable material shall be removed. Slash will be lopped and scattered to contract specifications well away from leave trees. All trees to be cut in this category will be marked with blue paint. All marked trees will be cruised to determine volume.

Ponderosa pine, mature and old – Keen Class 4 (“yellowpine”).

These are trees that show the characteristics of old trees: yellow/orange plated bark; rounded or flat topped crowns. In general all trees in this category will be retained unless they pose a hazard to a developed or dispersed recreation site. Any tree to be cut will be marked with blue paint and cruised as described in the previous category. Slash will be treated as described above.

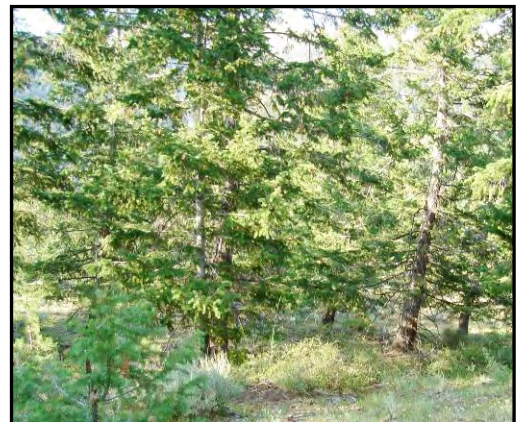


All ponderosa pine, including scattered trees.

Competing and ladder-fuel vegetation, such as pinyon pine, juniper, and mahogany will be cut. This will include all woody vegetation (aspen and oak excluded) that is within 1½ tree heights from the bole of the ponderosa pine. Merchantable material will be removed and slash will be lopped and scattered to contract specifications well away from the ponderosa pine.

Mixed Conifer.

Mixed conifer stands will be cut-tree marked with blue paint and cruised as described above. The desirable residual basal area is 80 square feet or less. The best trees of all species in the dominant and co-dominant classes will be retained. Species preference (for leave trees) will take the following order: ponderosa pine > limber pine > Douglas-fir > spruce > subalpine fir > white fir. Aspen are not to be cut. The general guidelines listed above for cutting of ponderosa pine and slash treatment also apply in these stands.





Aspen.

Within identified aspen stands, all conifers less than 8” dbh are to be cut, lopped, and scattered. No merchantable volume is expected. The contractor will be responsible to identify cut and leave trees in this unit – trees will not be marked.

Pinyon-Juniper.

Thin perennial pinyon-juniper stands to a residual stand density index (SDI) of 15% of maximum using an uneven-aged target. The contractor will be responsible for selection of cut and leave trees in this vegetation type. Contract provision 5.2.5 describes the selection of desirable leave trees, target diameter distribution, number of leave trees by diameter class, and provides spacing guidelines (see table below).



SPACING GUIDES FOR PJ TREES OF LIKE SIZE		
Diameter at Root Collar (DRC) [size class]	Spacing Between Trees of Like Size	Target Trees Per Acre (after treatment)
<8 inches [small]	22 feet	30
8 – 18 inches [medium]	42 feet	8
>18 inches [large]	60 feet	6

SPACING GUIDES FOR PJ TREES OF UNLIKE SIZE	
Size Classes	Spacing Between Trees of Unlike Size
Small - Medium	32 feet
Small – Large	41 feet
Medium - Large	51 feet

McMillan Spring Stewardship General Location

