

# *Orientation Updates*



Student Orientation & Transition Services



UtahStateUniversity

# SOTS OVERALL MISSION



- **JUST CAUSE (THE WHY):** We provide premier support and minimize barriers for students and parents as they transition to college.
- **VISION (WHERE WE ARE HEADED):** 100% of students (and parents) say that their onboarding was helpful/adequate.

## ORIENTATION

- Online orientation
- In-person events
- Social media
- Campus outreach

## ONBOARDING

- Student outreach (texting, emails, etc.)
- Caseload management
- Student appointments

## PARENTS

- Newsletter
- Parent appointments
- In-person events

## CONNECTIONS

- Peer mentoring
- Scheduling
- Event logistics
- Activities
- Committee input

# ORIENTATION UPDATES

- New orientation platform with added accessibility
- Consolidated and reorganized slides
- Additional member groups

[Module Map](#)



# WHO IS REQUIRED TO DO ORIENTATION?

All incoming students are now required to do orientation and will have an orientation hold.

## Admit Codes

Admit Codes Oriented through SOTS				
ZB	Second Bachelor	REQUIRED if havent attended USU in 3 years	No-OR hold only	Post-Grad
3B	Third Bachelor	REQUIRED if havent attended USU in 3 years	No-OR hold only	Post-Grad
AA	Returning Academic Action	REQUIRED	No-OR hold only	Returning (Z00 gets OTR)
AU	Audit	REQUIRED if havent attended USU in 3 years	No-OR hold only	Nonmatriculated
EA	Early Admission	REQUIRED	Yes-OT hold in addition to OR hold	Assorted First-Year
EC	Extension Continuing	REQUIRED	Yes-OT hold in addition to OR hold	Returning
ER	Extension Returning	REQUIRED	Yes-OT hold in addition to OR hold	Returning
FG	First Time UG (HS 1yr+)	REQUIRED	Yes-OT hold in addition to OR hold	Assorted First-Year
I2	International 2nd Bachelor	REQUIRED if havent attended USU in 3 years	No-OR hold only	Logan International
I3	International 3rd Bachelor	REQUIRED if havent attended USU in 3 years	No-OR hold only	Logan International
IC	International Continuing	REQUIRED	No-OR hold only	Logan International
IF	Intl First Time UG (HS 1yr+)	REQUIRED	Yes-OT hold in addition to OR hold	Logan International
IN	Intl First Time UG (just grad)	REQUIRED	Yes-OT hold in addition to OR hold	Logan International
IP	Intl. Student Exchange Program	REQUIRED	No-OR hold only, but does get FNSS fee after registering	Study Abroad
IR	International Returning	REQUIRED	No-OR hold only	Logan International
IT	International Transfer Out-US	REQUIRED	Yes-OT hold in addition to OR hold	Logan International
IU	International Transfer US	REQUIRED	Yes-OT hold in addition to OR hold	Logan International
NE	National Student Exchange	REQUIRED	No-OR hold only, but does get FNSS fee after registering	Study Abroad
NF	First Time UG (HS 1yr+)	REQUIRED	Yes-OT hold in addition to OR hold	Assorted First-Year
PB	Post Bachelor Certificate/Asso	REQUIRED if havent attended USU in 3 years	No-OR hold only	Post-Grad
PP	Post Profnl Degree Undergrad	REQUIRED if havent attended USU in 3 years	No-OR hold only	Post-Grad
RG	Returning	REQUIRED if havent attended USU in 3 years	No-OR hold only	Returning (Z00 gets OTR)
RT	Returning Transfer	REQUIRED if havent attended USU in 3 years	No-OR hold only	Returning (Z00 gets OTR)
SA	Senior Citizen Audit	REQUIRED if havent attended USU in 3 years	No-OR hold only	Nonmatriculated
SB	Study Abroad	REQUIRED if havent attended USU in 3 years	No-OR hold only	Nonmatriculated
TL	Transfer less than 24	REQUIRED	Yes-OT hold in addition to OR hold	Assorted Transfer
TM	Transfer 24 or more	REQUIRED	Yes-OT hold in addition to OR hold	Assorted Transfer
UN	Undergraduate Non Matriculated	REQUIRED if havent attended USU in 3 years	No-OR hold only	Nonmatriculated
GN	Graduate Non Matriculated	REQUIRED if havent attended USU in 3 years	No-OR hold only	Nonmatriculated
YT	China Transfer	REQUIRED	No-OR hold only	Logan International

# NEW STUDENT ORIENTATION

- First year, transfers, international students: 4 module orientation
- Returning students, post graduate, technical education, non-matriculated: 2 module orientation

## Module 1: Pre-Registration

This module helps you prepare for your next steps at Utah State University. You'll learn how to complete the FASFA and explore financial aid, scholarships, and payment options. You'll also get guidance on setting up housing, choosing a meal plan, and understanding deferment.

Plus, you'll learn how to use the MyUSU Portal, submit your transcripts, connect with academic advising, and find a job on campus so you can start your Aggie experience feeling confident and prepared.

## Module 2: Registration

Learn everything you need to register for classes at Utah State University, from setting up your USU email and Multifactor Authentication to accessing the Banner system. You'll see how your previous credits apply at USU, find out how and when to register, learn about USU 1010 Connections, and review important dates and deadlines so you're ready for your first semester as an Aggie.

## Module 3: Aggie Orientation

You'll learn about important campus resources like academic support, testing services, health and wellness, campus recreation, student involvement opportunities and how Aggie Orientation helps you start strong at Utah State University.

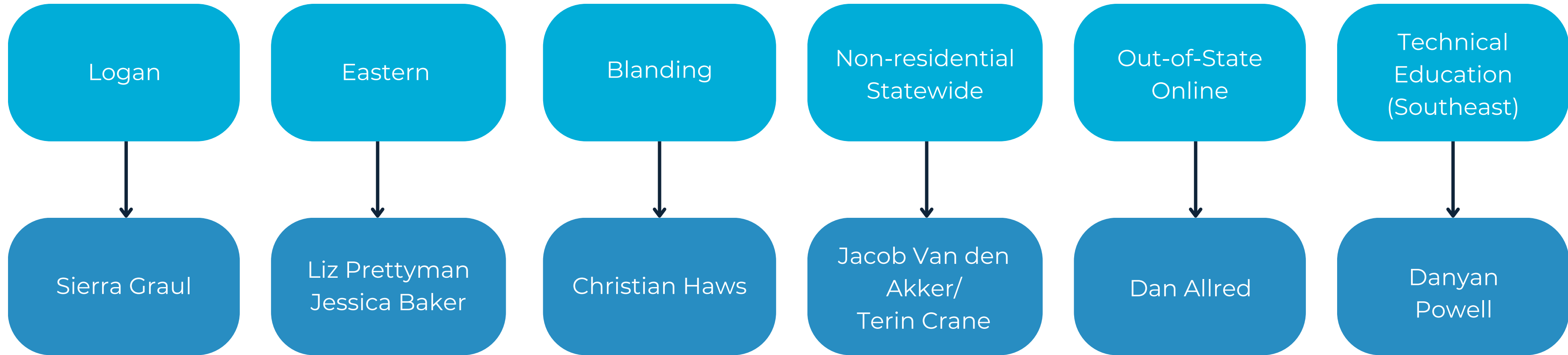
You'll also get information on how financial aid is disbursed, how to set up your USU ID, parking and transportation options, and how to stay connected through USU's social media - giving you the tools you need to succeed.

## Module 4: Pre-Semester

Get ready for the final details you need before the semester begins, including required campus safety trainings for all incoming students. You'll learn how to communicate with professors and roommates, sign up for Aggie Alerts, and understand key campus safety and cybersecurity practices.

You'll also review USU's drug and alcohol policy, explore mental health support resources, learn about campus traditions, and understand your options for notification of leave.

# STATEWIDE REPS



The Logan orientation office oversees the modules and makes edits. Campus representatives inform content and ensure the orientation is effective for their populations. They oversee orientation for their populations, answer questions, and help incoming students navigate the modules.

# ORIENTATION FEEDBACK

- We are asking for anyone who can to go through the orientation modules as a student and give us feedback.
- Please send any edits or suggestions to **orientation@usu.edu** or to your campus rep.
- If needed, we will consult with our statewide or departmental reps before making edits.

[Staff Login](#)



# Thank you!



Student Orientation & Transition Services



UtahStateUniversity