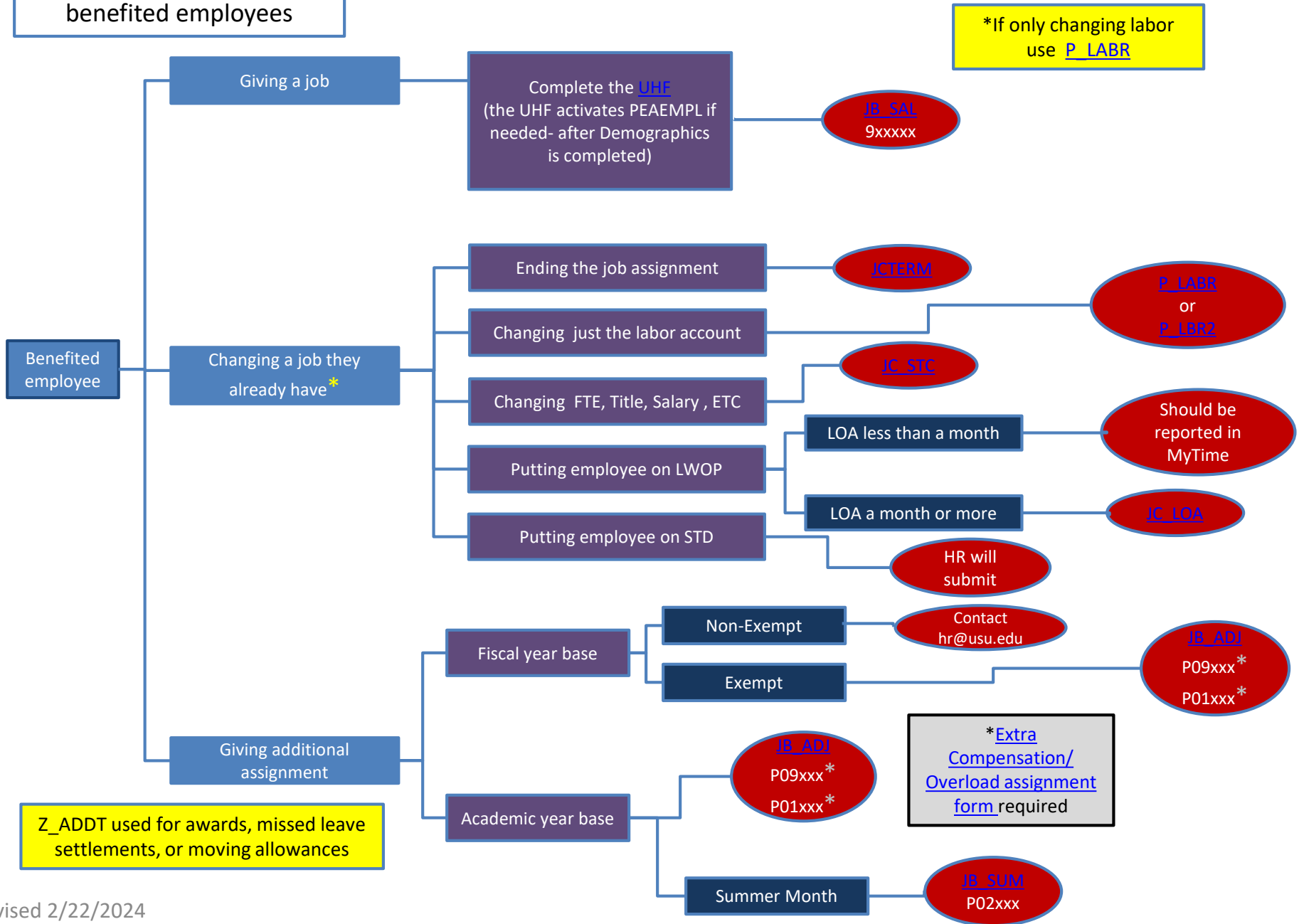


Decision Tree #1 used for benefited employees

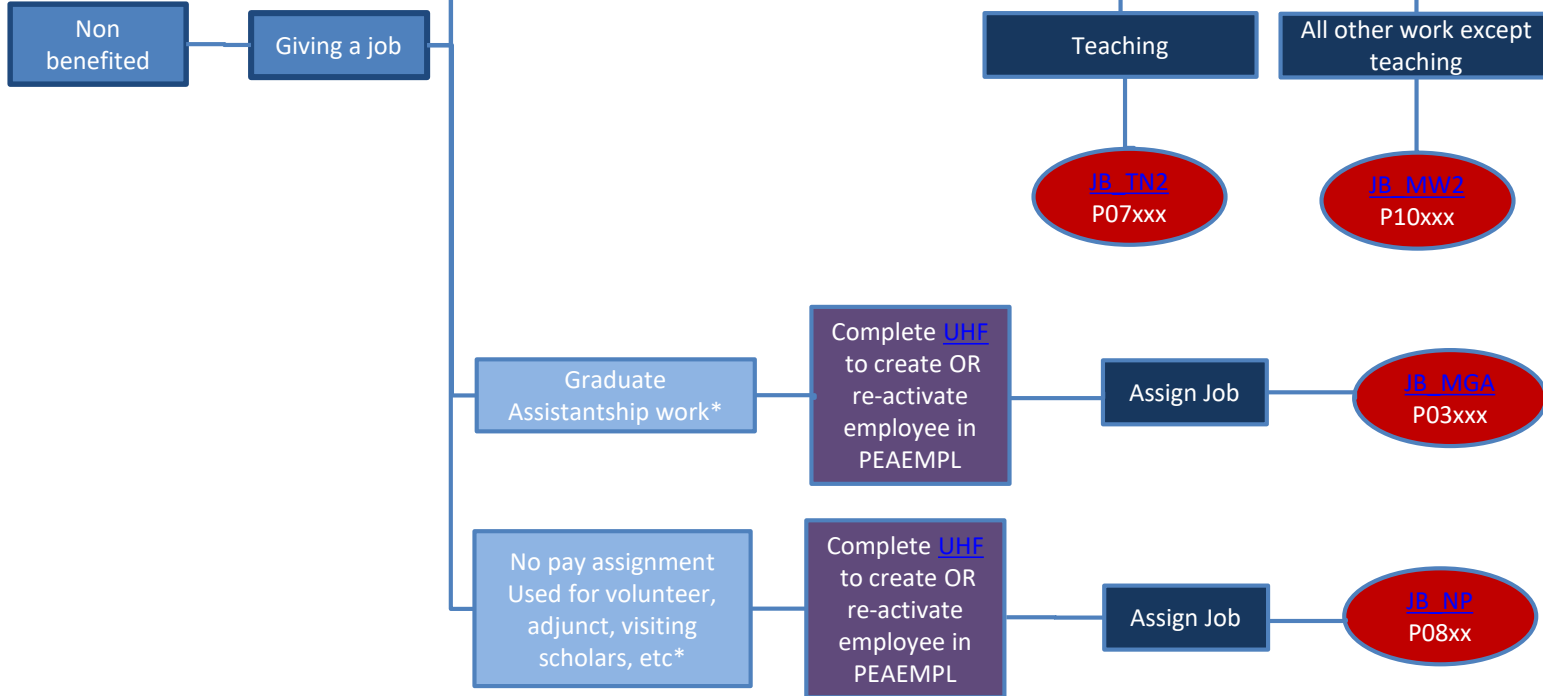


*If only changing labor use P_LABR

Z_ADDT used for awards, missed leave settlements, or moving allowances

*Extra Compensation/
Overload assignment
form required

Decision Tree #2
used for non-
benefited
employees



Decision Tree #3
used for non-
benefited
employees

Non benefited Changing a job they already have*

*If only changing labor use [P LABR](#) except on workstudy. Then use [WS LBR](#).

