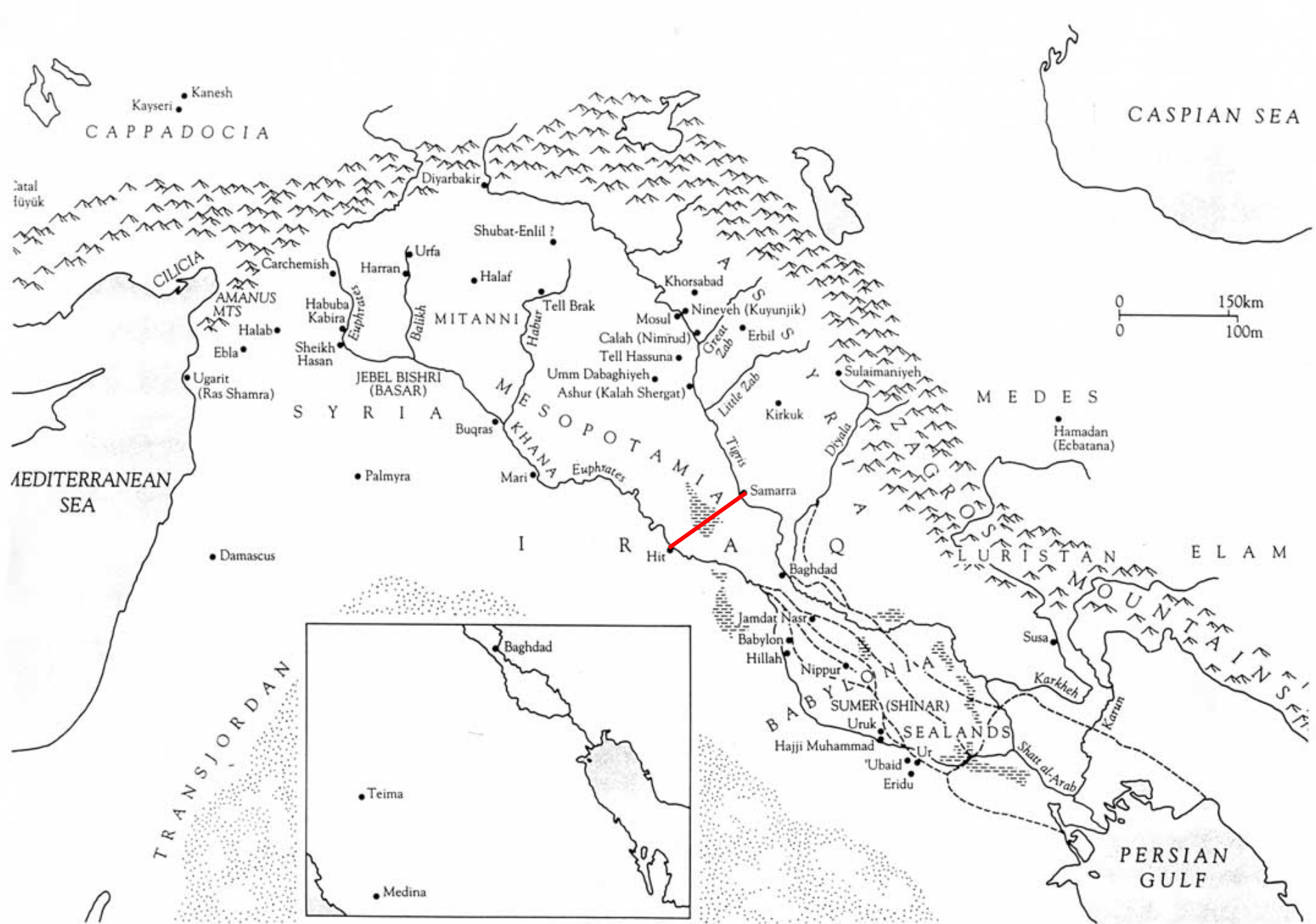


# The Ancient Near East



# Mountains of Northern Mesopotamia



# Contour Map: Southern Mesopotamia



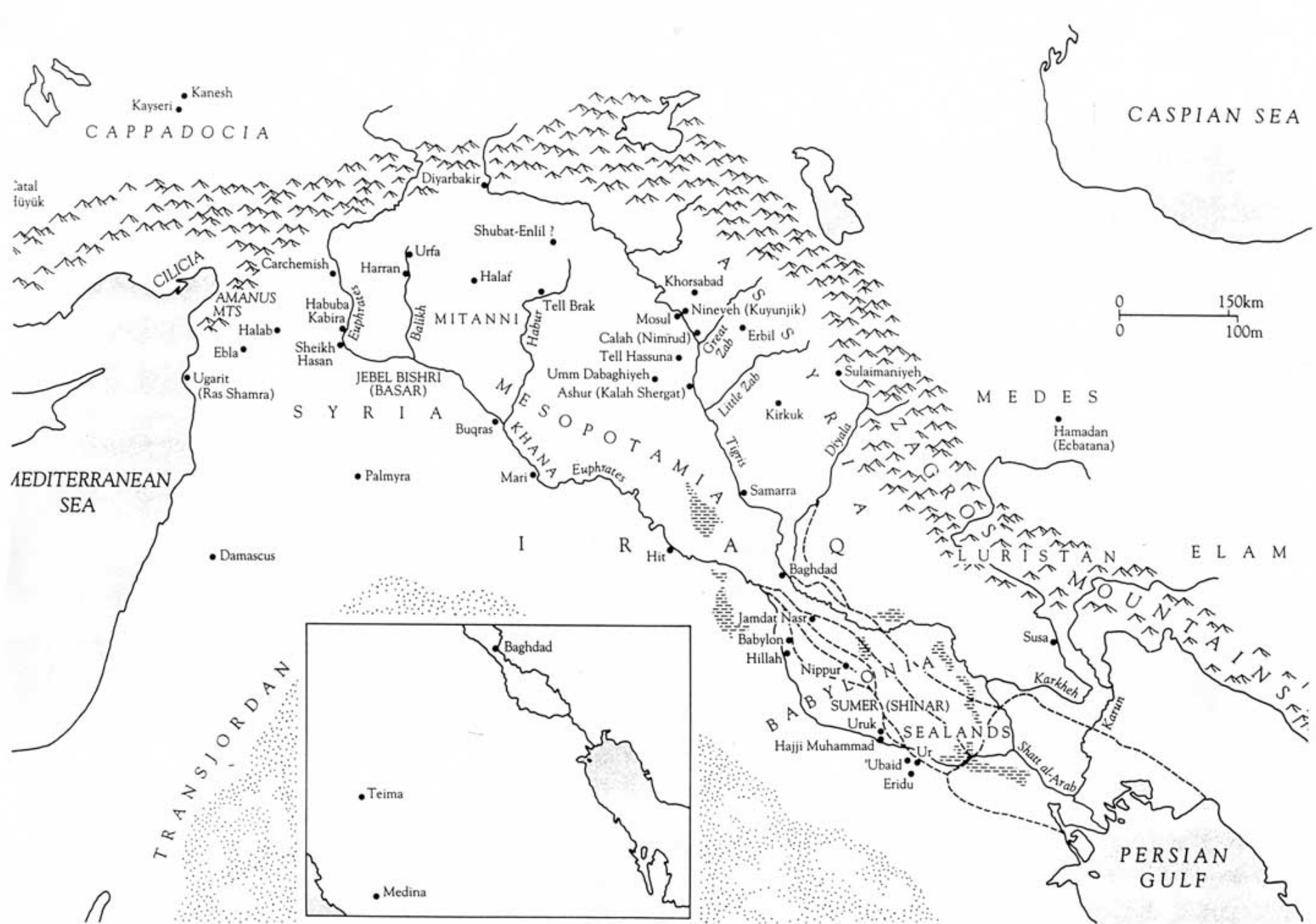
# The Delta of the Tigris and Euphrates Rivers in Southern Mesopotamia



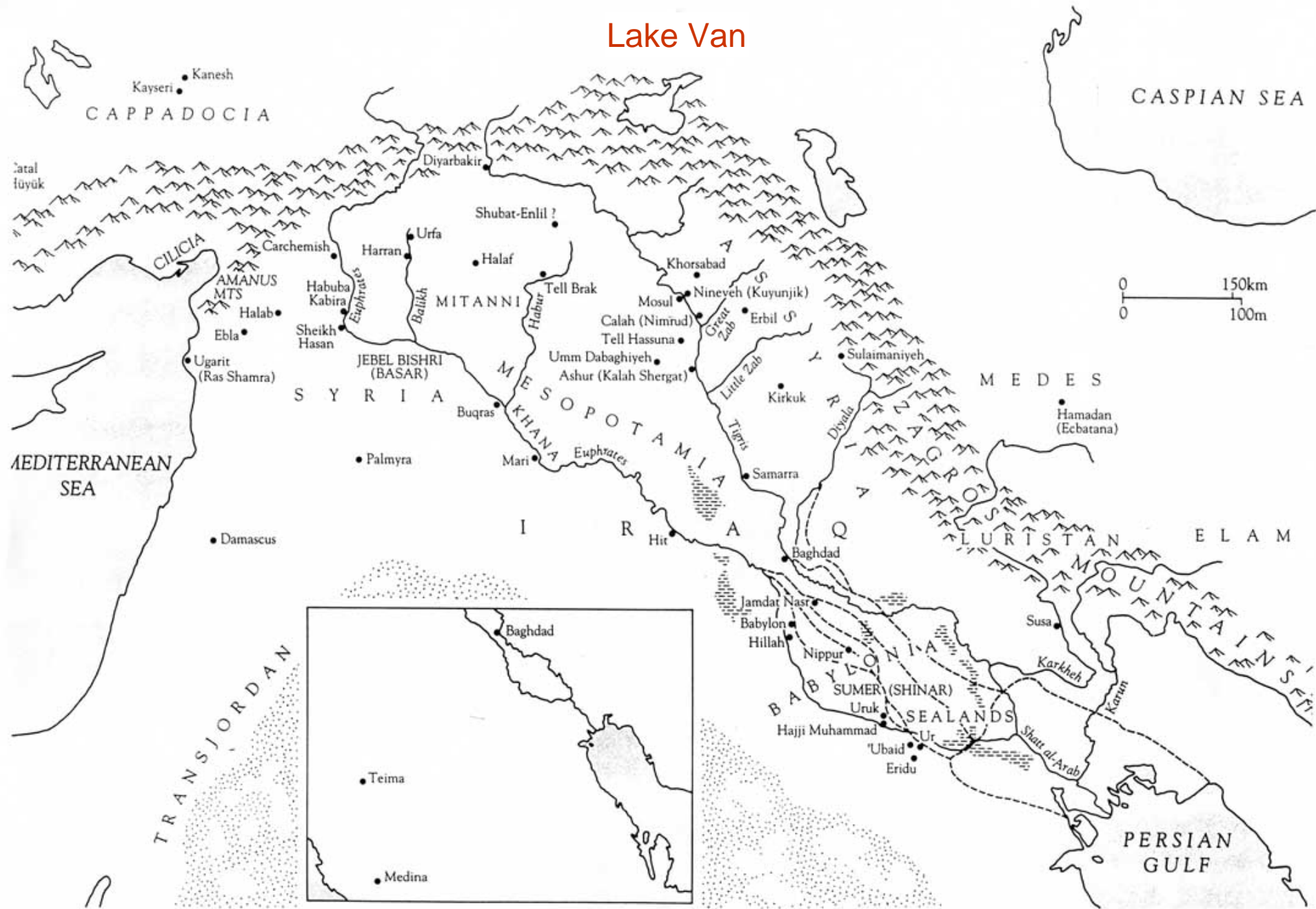
# The Delta of the Tigris and Euphrates Rivers

(as seen from  
space)





# Lake Van



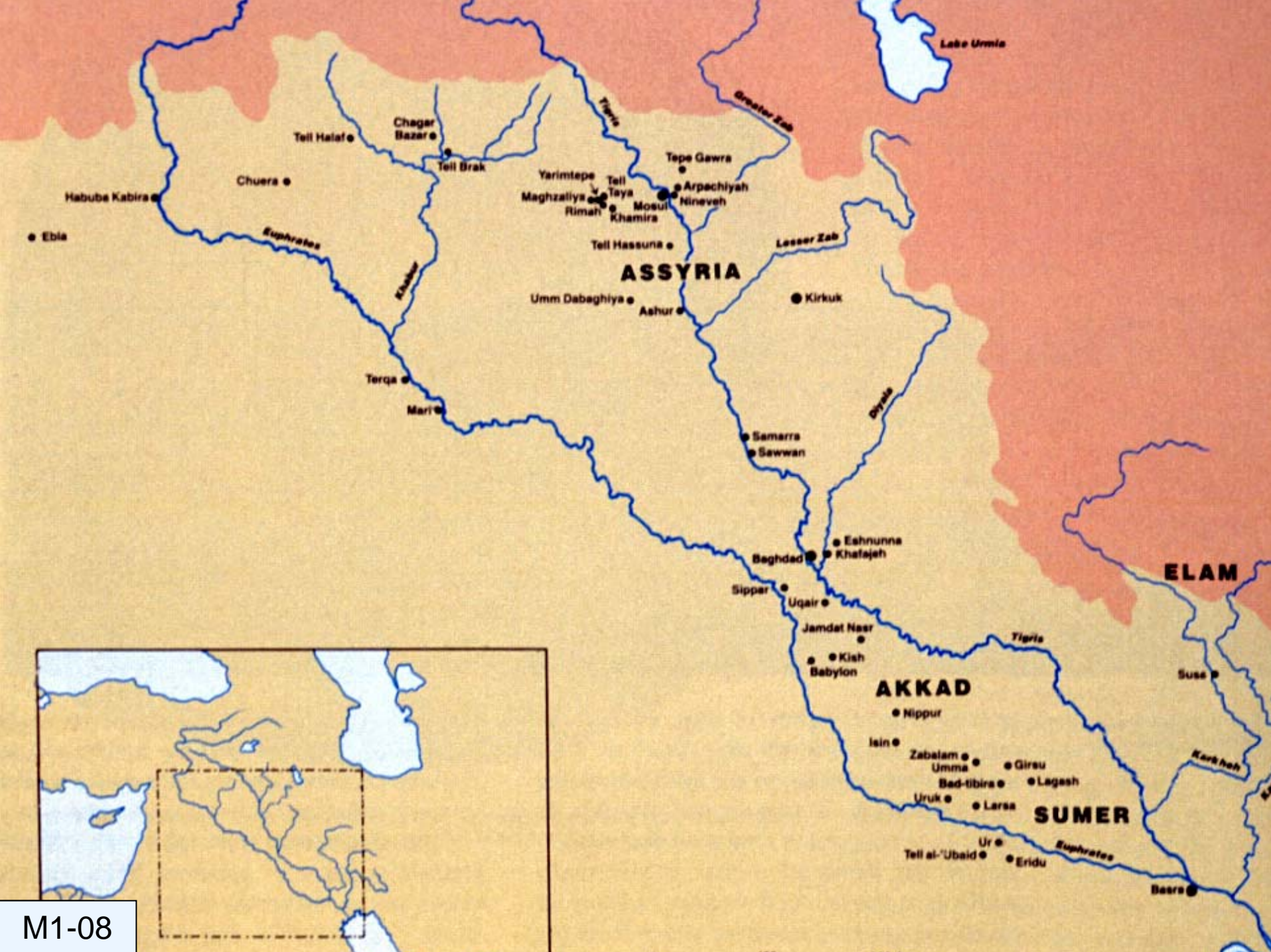


3 The Shatt al-Arab at the junction of the Euphrates and Tigris rivers. In local tradition this was the site of the Garden of Eden.

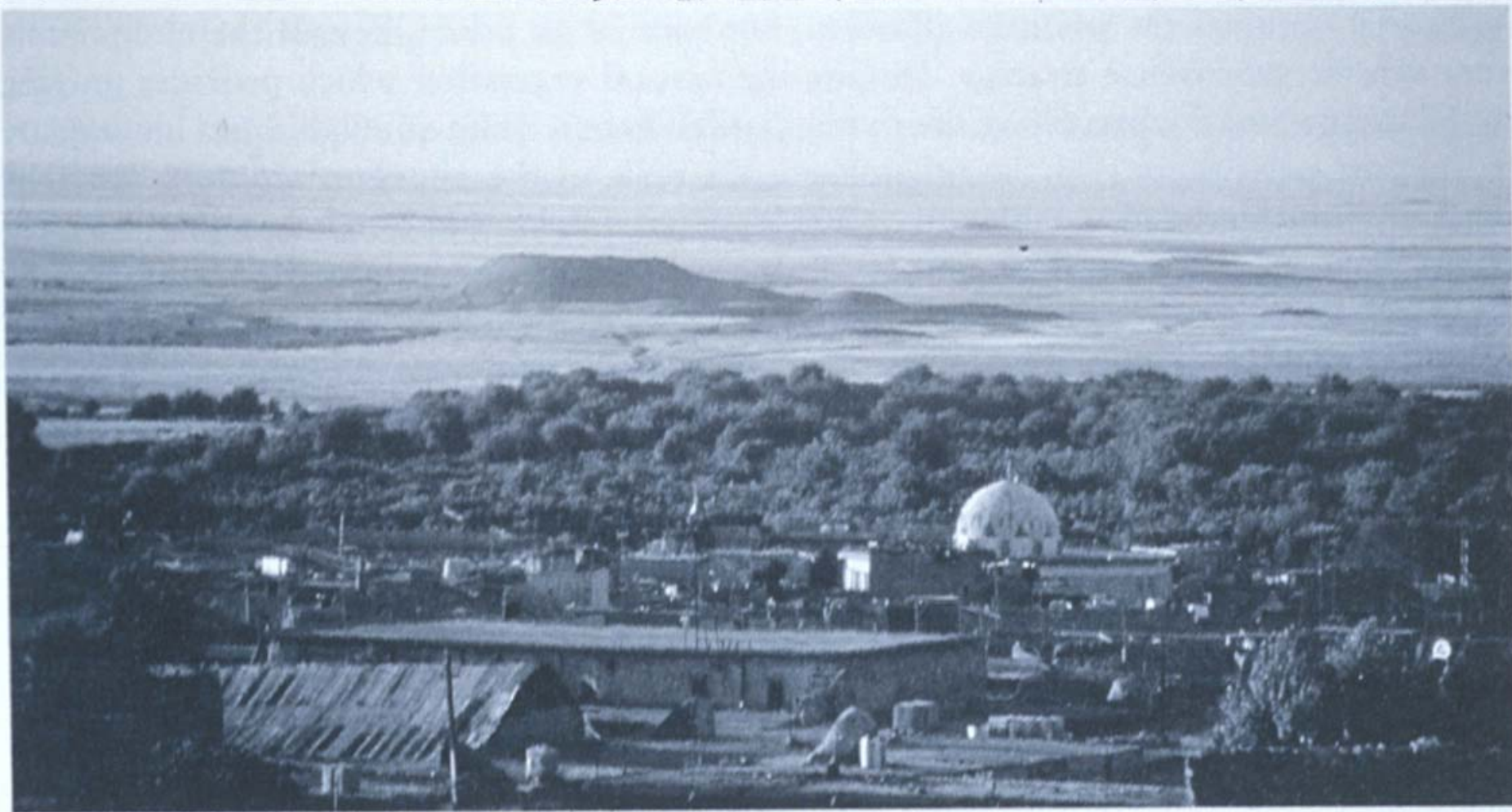
# Flooded Field

in Southern  
Mesopotamia





M1-08



*Figure 1:8* Ancient mounds in the jazirah between the Tigris and Sinjar: view south from the modern citadel at Tell Afar. (Photo: courtesy David Connolly)

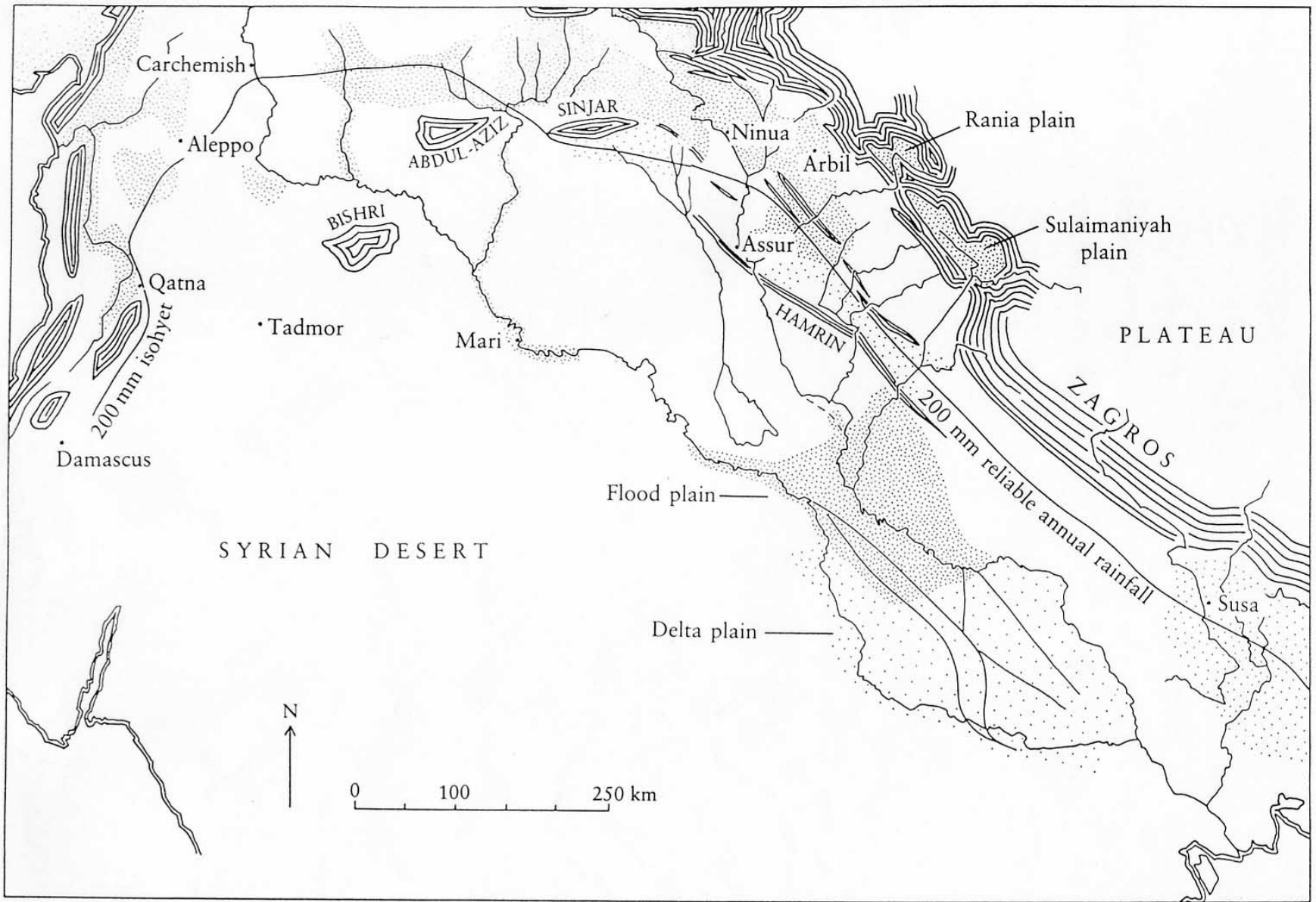


Figure 1:7 Mesopotamia and Syria: relief and soils, showing best areas for irrigation and rainfall agriculture. (Based partly on Buringh 1960 and Wirth 1971)



## Drawing of a storm on the Euphrates River

# Irrigated Fields in the Tigris Valley



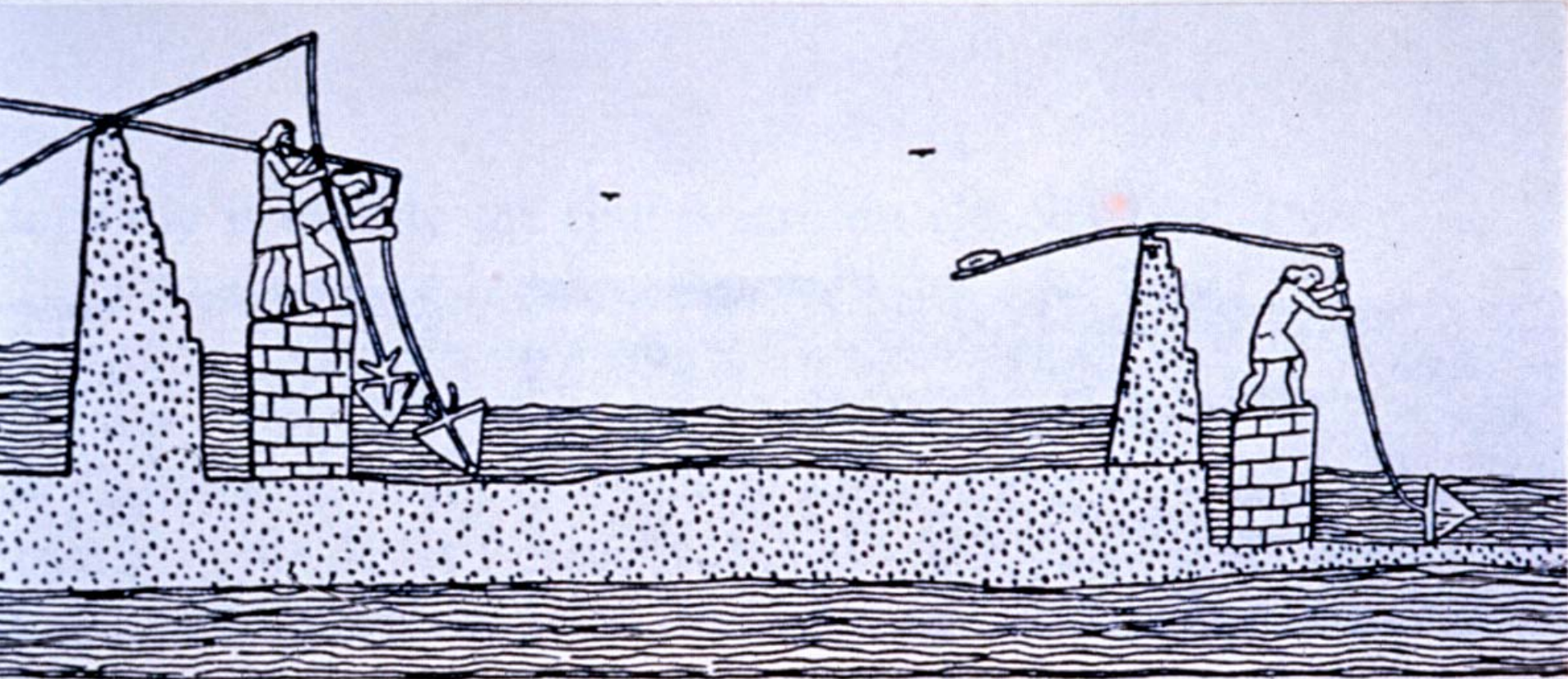
# Irrigated Fields



# Relief: Worker Using a *Shaduf*



# Diagram: Ancient Methods of Irrigation



ANCIENT ASSYRIANS USING EGYPTIAN METHOD OF IRRIGATION

# Remains of an Ancient Canal



*Figure 9:3* Disused canal in southern Iraq to show height of banks of spoil each side.

# Remains of Parallel Canals

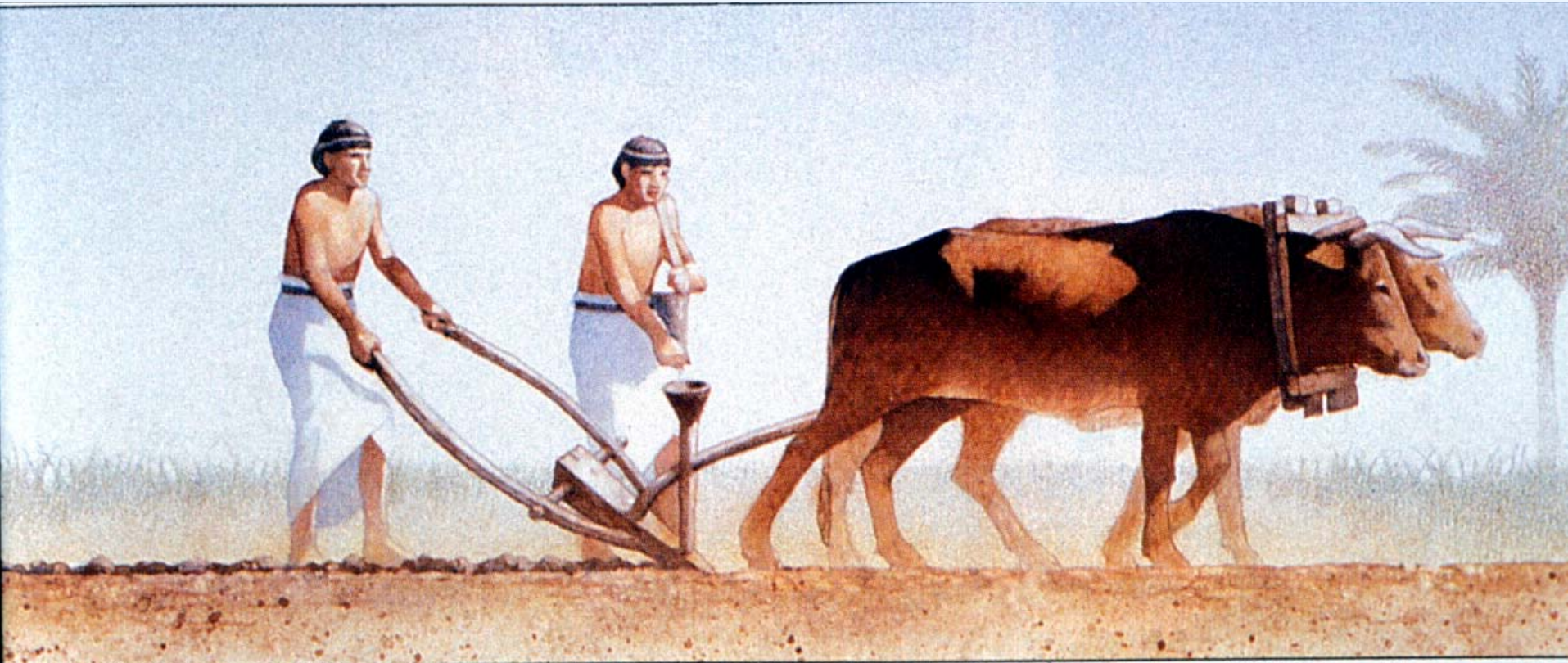


# The Impact of Salinization



*Figure 9:4* Saline soil in southern Iraq today.

# Plow, with Seed Funnel

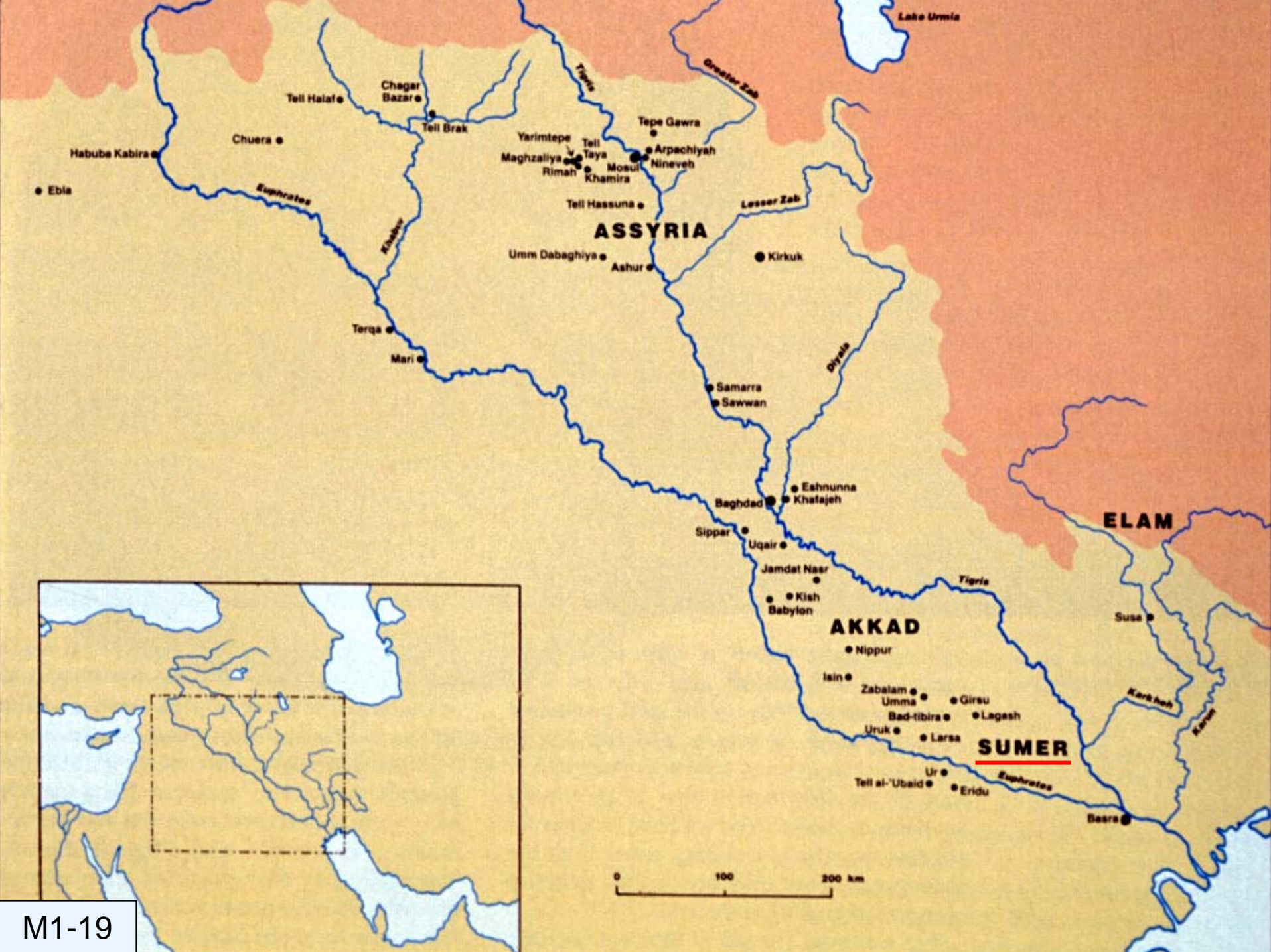


# The Desert to the West of Babylon







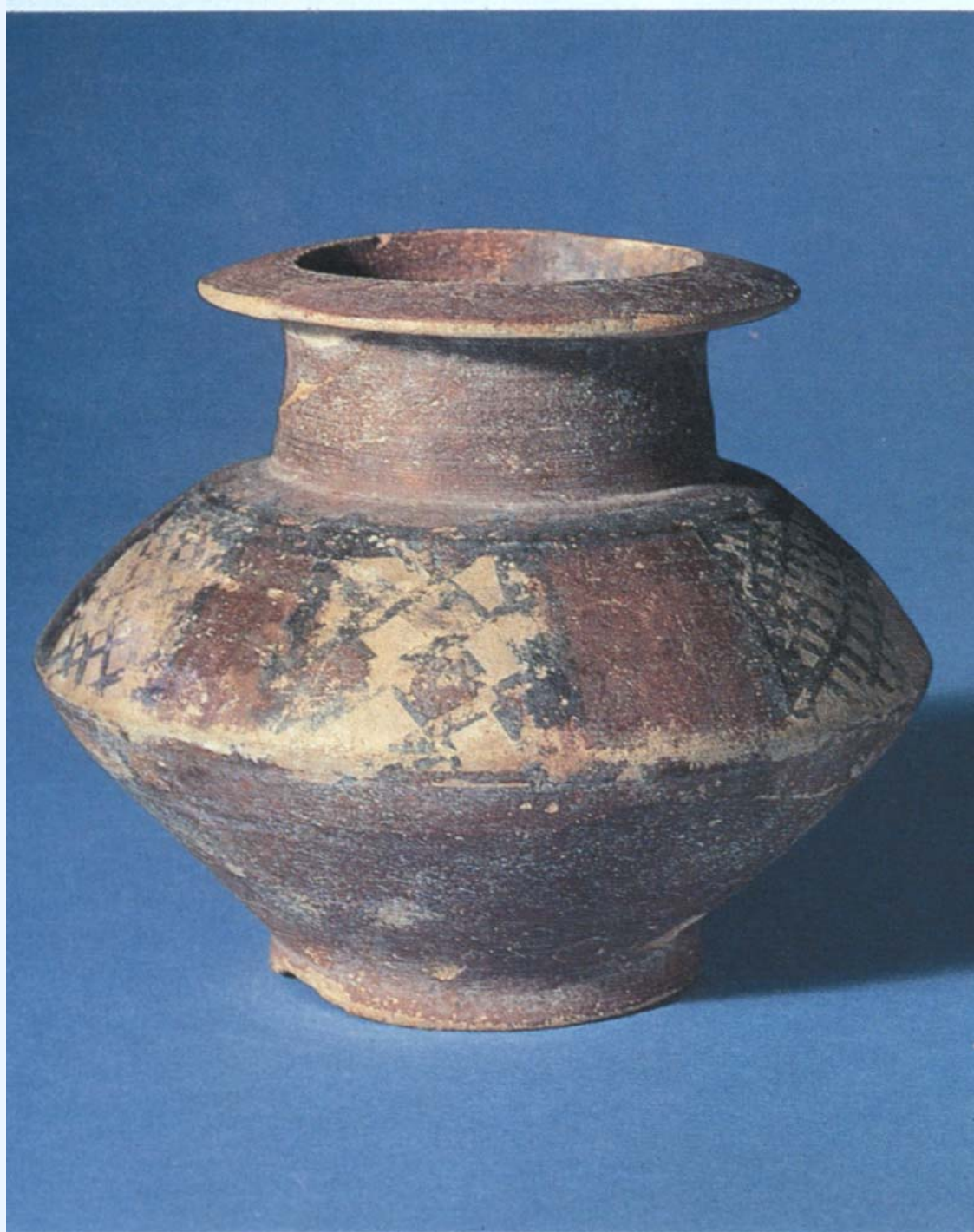


# Archaeologists at work



# Mesopotamian Pot

(ca. 3000 BCE)



# Cylinder Seal



4.3 cm.

c. Modern impression of the Early Dynastic III lapis lazuli seal of Pu-abi found in her grave in the Royal Cemetery at Ur (c. 2600 BC). It depicts a banquet scene in two registers reminiscent of the banquet on the Royal Standard (see Fig. 50b) except that one of the principal banqueters is a lady, perhaps Pu-abi herself as her name and title appear in the cuneiform inscription behind her. She is attended by two women whereas the man facing her and the two men on the lower register have male attendants. There is a leg of meat on a stand beside the lower banqueters. Ht 4.9 cm.