

- ⊥ not known to have survived after this time
- ↓ survived after this time
- | descended from or related to

Figure 2.9 Chart of the principal languages of the ancient Near East with their geographical base and genetic relationships.



The Ancient Near East

# Hurrian Vase



M5-02

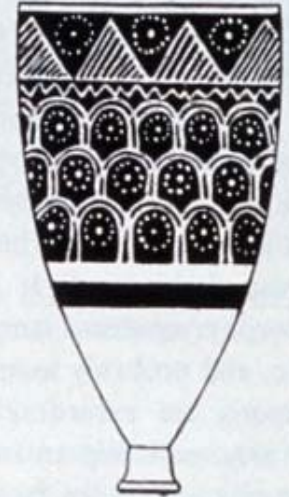
# Diagram of Mitannian pottery



1



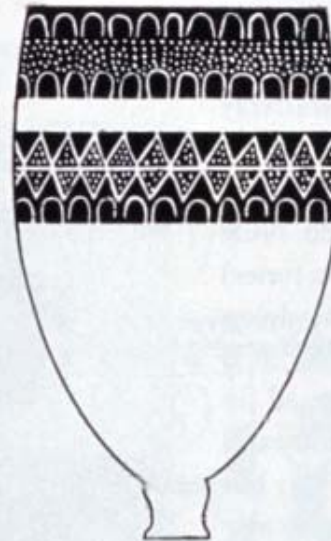
2



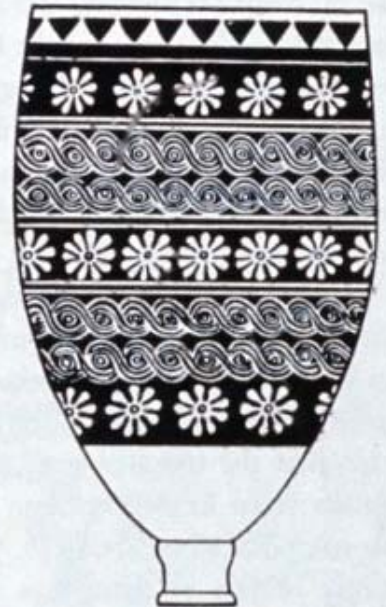
3



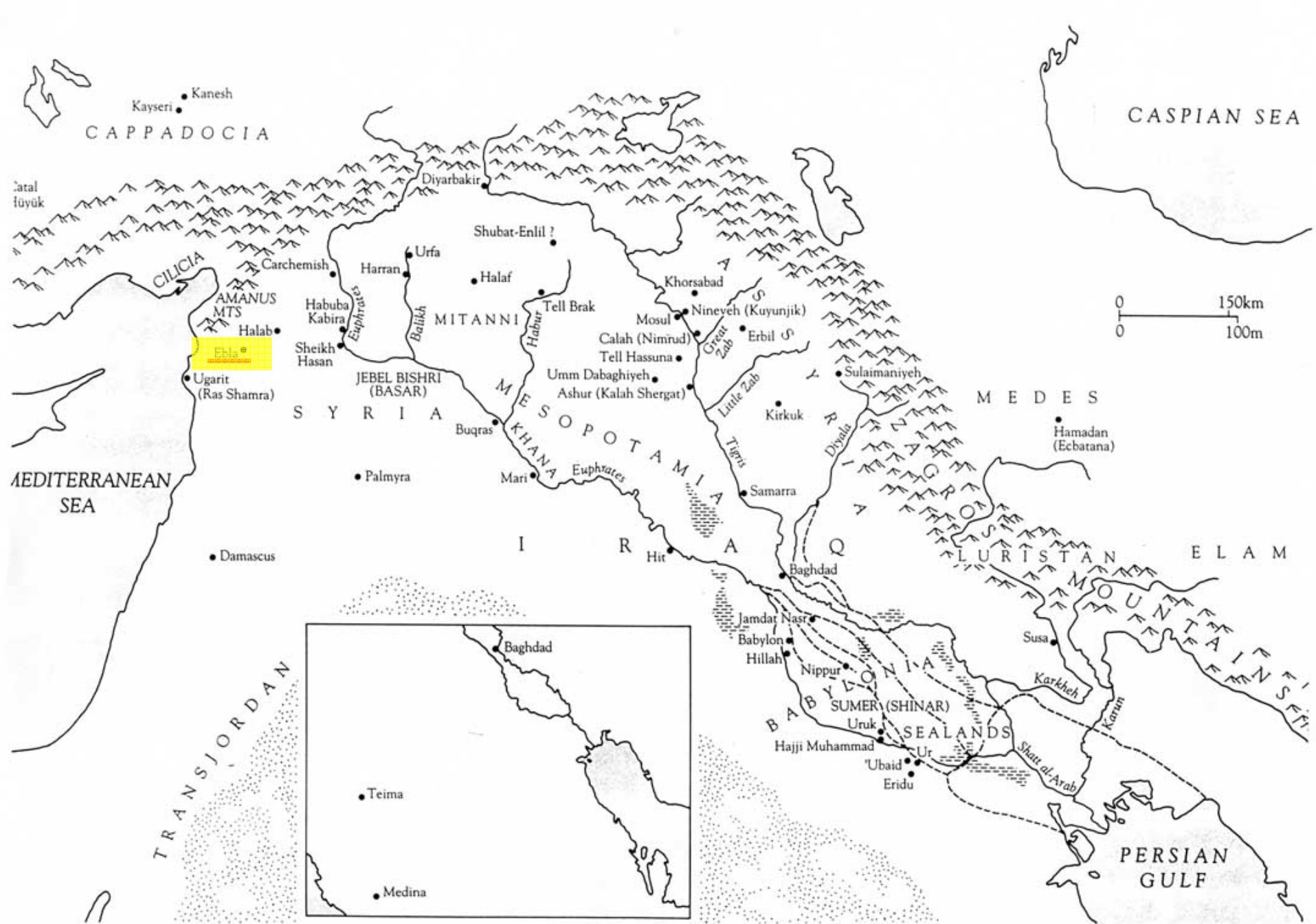
4



5



6

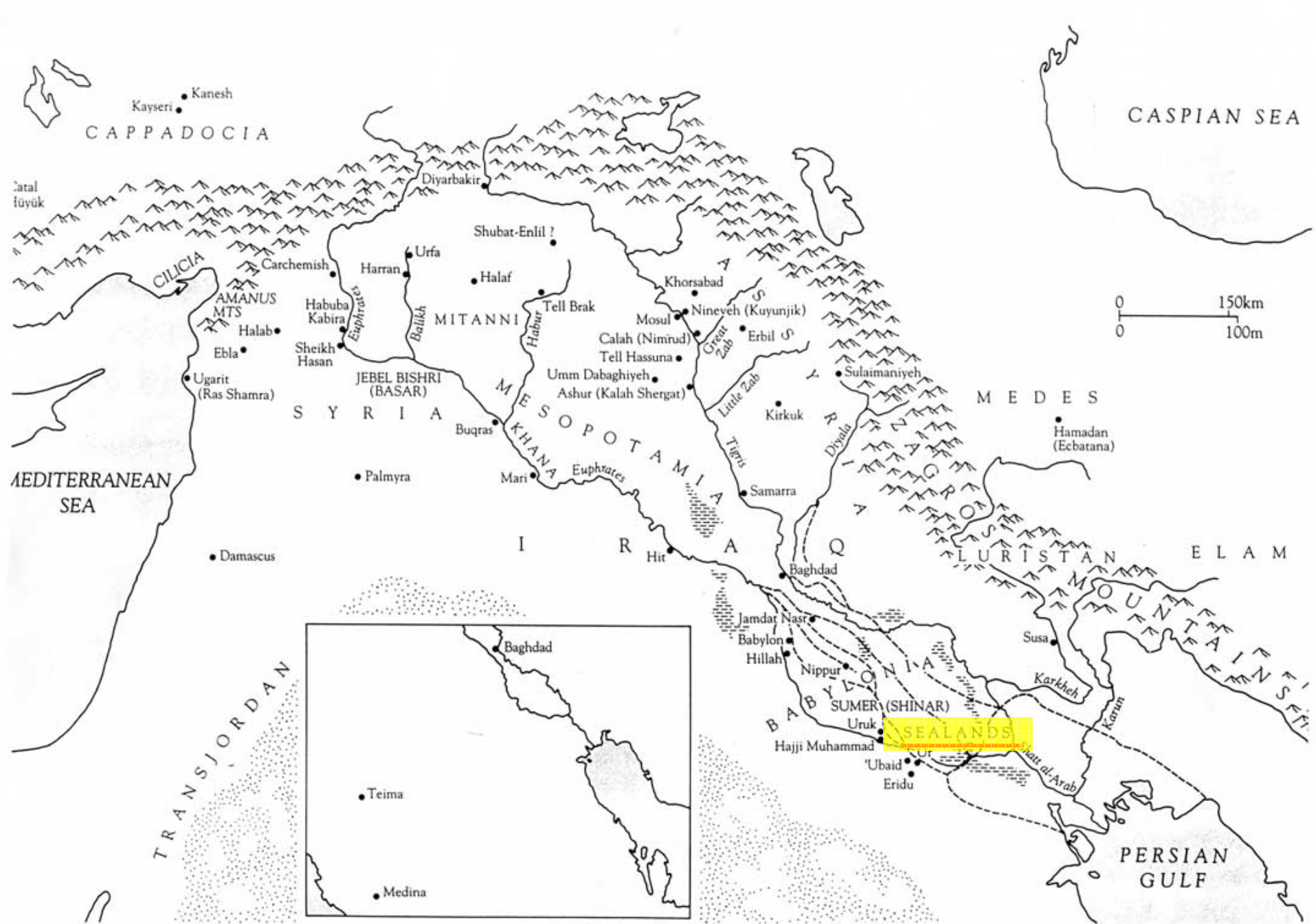




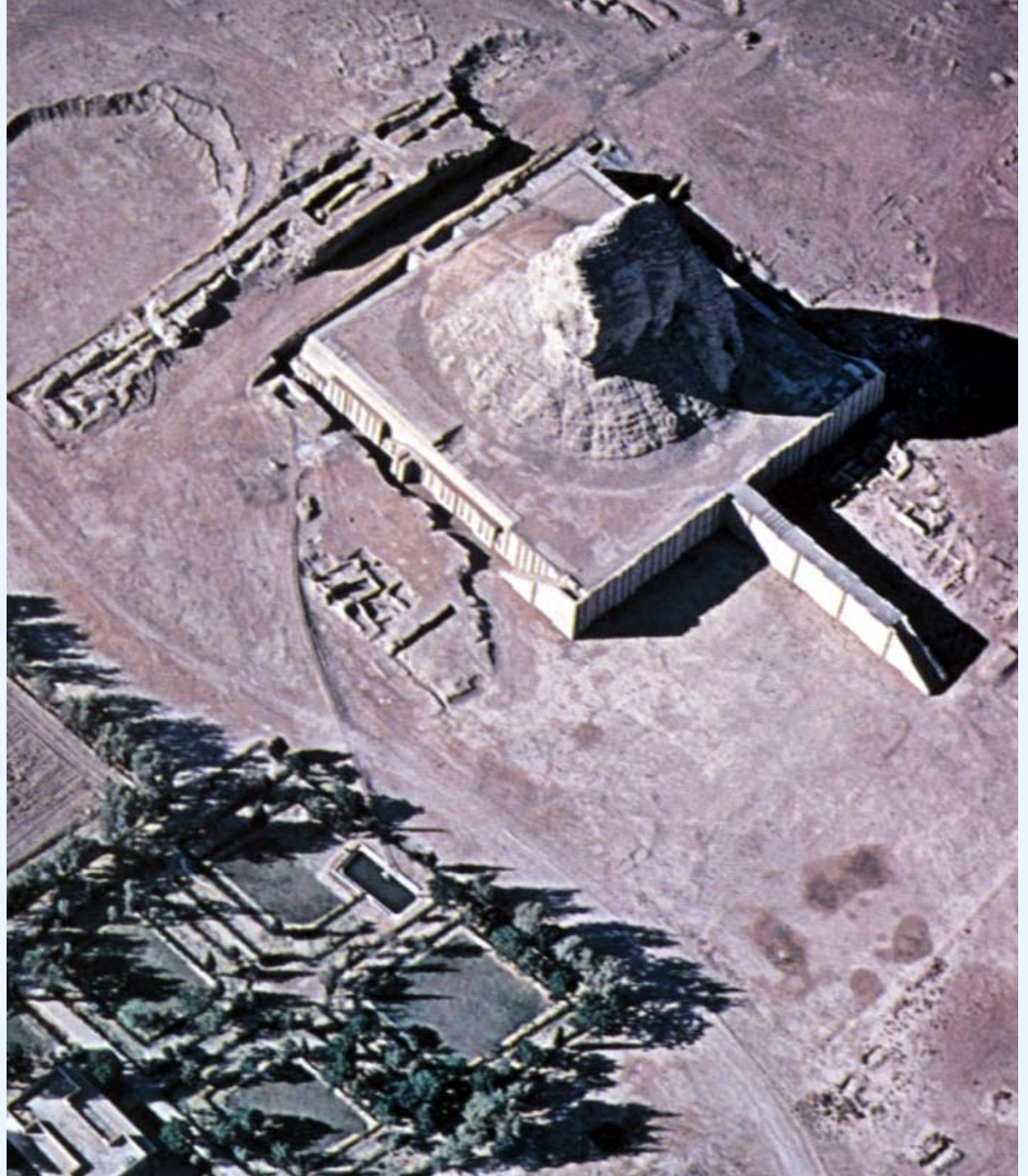
*Figure 3:8* The archive room at Ebla in the course of excavation. Tablets had fallen from their wooden shelves when the room was burnt. (Courtesy P. Matthiae)

# Lamasu





# Kassite Ziggurat at Aqarquf



# Kudurru



64 Boundary stone, with a land-grant by Nebuchadnezzar I (1124–1103 BC) inscribed on the reverse.



63 One of the innovations of the Kassite period was a frieze made from baked moulded bricks to form a temple façade, 2–3 m (7–10 ft) high. This reassembled example comes from the temple of Inanna at Uruk, late fifteenth century BC.



145. Head of a man, from Dur Kurigalzu.  
Terracotta. *Baghdad, Iraq Museum*

An Example  
of Kassite  
Art:  
animal head  
(lioness?)

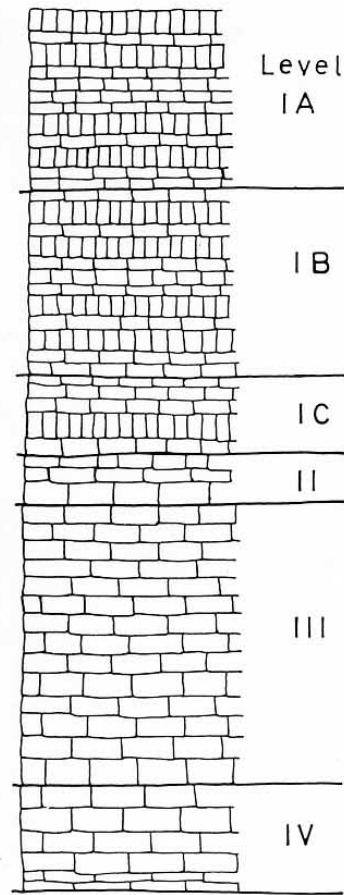


# The Ziggurat of Dur-kurigalzu



# The Ziggurat of Dur-kurigalzu





67 Schematic diagram illustrating the abrupt change in building technique which takes place between the first three (IV-II) and the latest palaces (IC-IA) at Dur-Kurigalzu. The unusual and very distinctive brick work of the latest phase, in which the bricks are laid alternately flat and on edge, is characteristic also of the ziggurat precinct. After Baqir.



66 In the doorways of the latest phase of the palace at Dur-Kurigalzu (12th century) were found painted dadoes showing processions of courtiers or officials entering and leaving the palace. This is the best preserved of a group of bearded figures wearing a fringed garment and a fez-like hat. The figures were painted in black, white and red on a 'yellowish wash'. Ht of figure *c.* 50 cm. After Baqir.

# late Kassite kudurru





62 The Kassites introduced this type of monument (called kudurru, usually translated as 'boundary stone') to commemorate grants of land or tax exemptions on land. This example is post-Kassite.

# Kassite Cylinder Seal



# Kassite Cylinder Seal



62 Impression of an agate cylinder seal belonging to an official of the Kassite king Burnaburiash. The scene of worship shows a kneeling suppliant and, in the corner, a dog, symbol of the goddess Gula. Other common Kassite symbols include the cross, bee, rosette and lozenge. Ht 4 cm. Vorderasiatisches Museum, Berlin.



Black Sea

Istanbul •

Boğazkale • □ ALACAHÖYÜK  
Ankara • □ HATTUSA

TURKEY

□ KÜLTEPE

□ EFLATUN PINAR

SYRIA

Mediterranean Sea

KADESH □

0 KILOMETERS 250

0 STATUTE MILES 150

## Table of Hittite Kings

<i>Name</i>	<i>Dates (B.C.)</i>	<i>Relationship to Last King</i>
Pitkhanas (of Kussara)		
<u>Anittas</u> (of Kussara)		Son

## OLD KINGDOM

Labarnas I	1680–1650	?
Labarnas II = Hattusilis I	1650–1620	Son
Mursilis I	1620–1590	Adopted son
Hantilis I	1590–1560	Brother-in-law
Zidantas I	1560–1550	Son-in-law
Ammunas	1550–1530	Son
Huzziyas I	1530–1525	Son (?)
Telipinus	1525–1500	Brother-in-law
Tahurwailis (?)	1500–1420	?
Alluwamnas		
Hantilis II		
Zidantas II		
Huzziyas II		
Muwatallis I (?)		

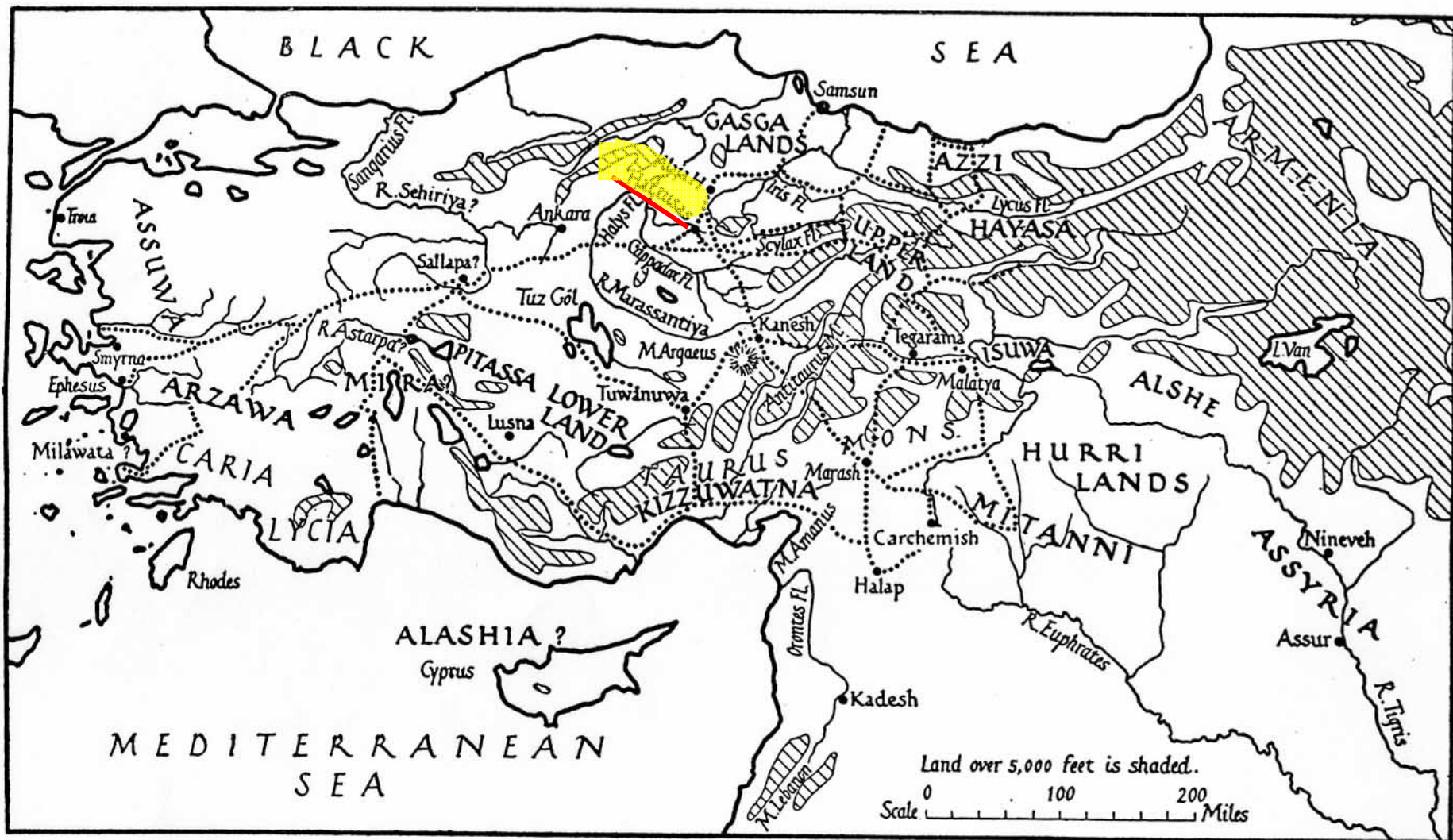


Fig. 1 - Map of Asia Minor

# Hattusas



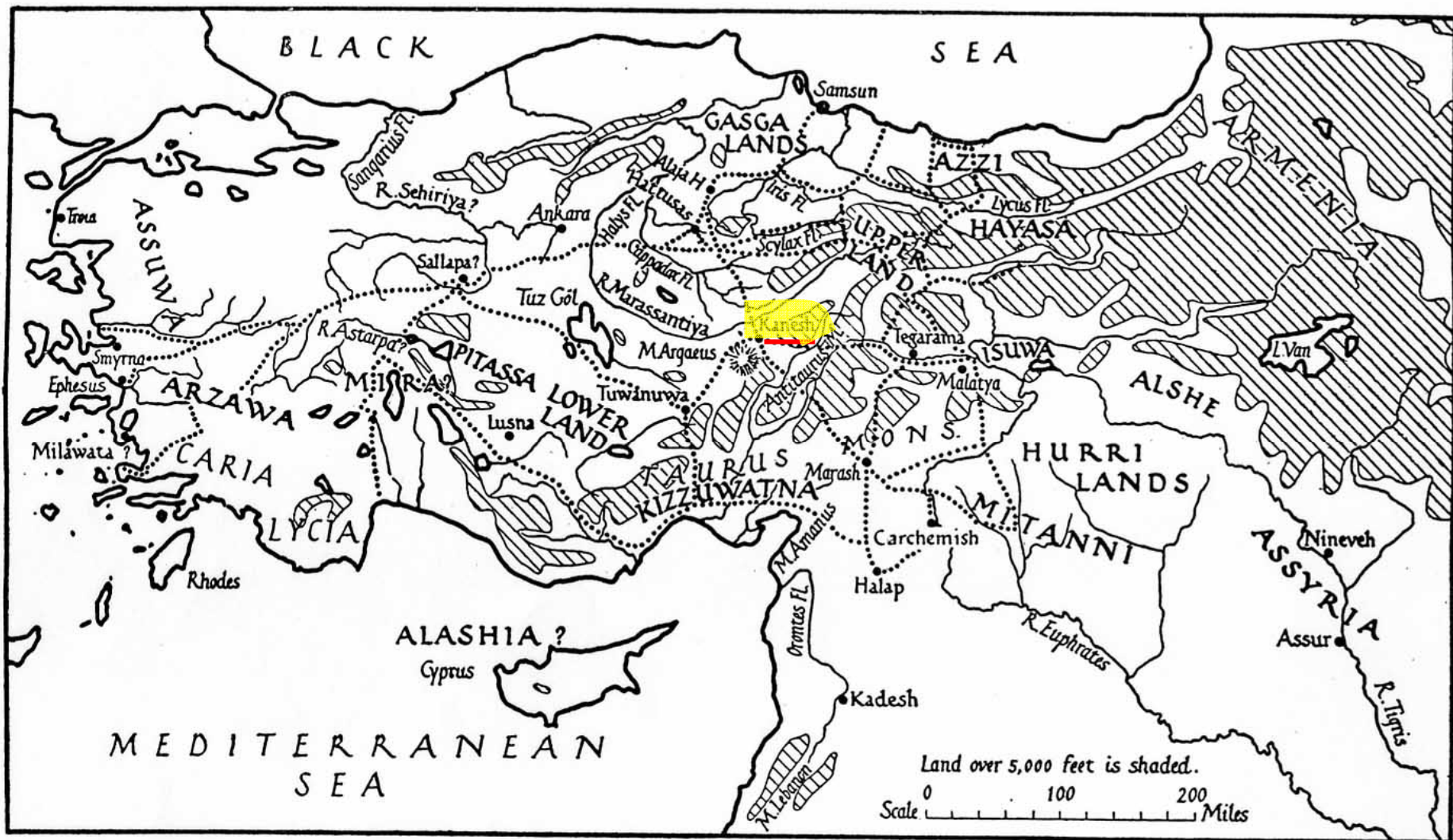


Fig. 1 - Map of Asia Minor

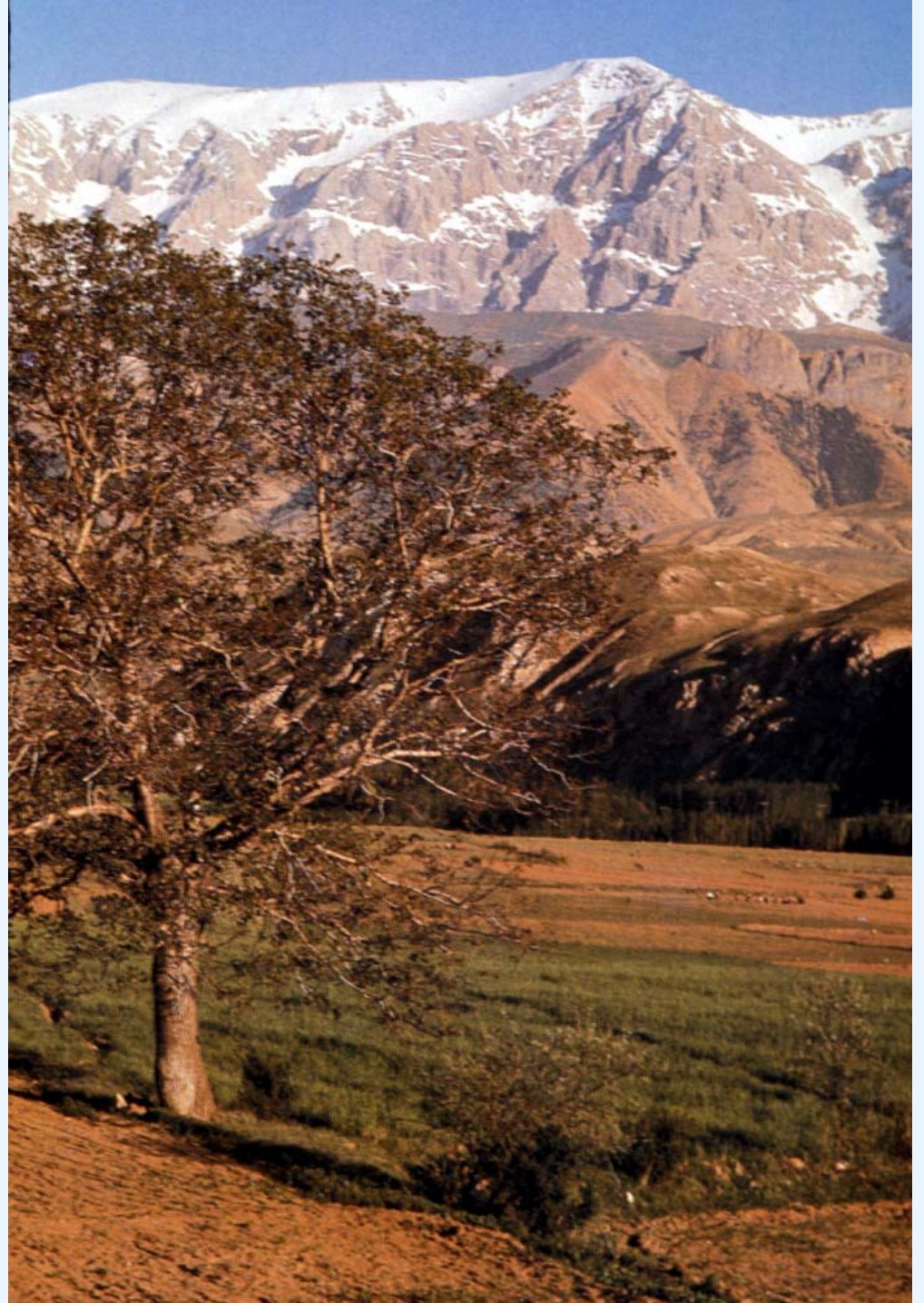
## Table of Hittite Kings

<i>Name</i>	<i>Dates (B.C.)</i>	<i>Relationship to Last King</i>
Pitkhanas (of Kussara)		
Anittas (of Kussara)		Son

## OLD KINGDOM

Labarnas I	1680–1650	?
Labarnas II = <u>Hattusilis I</u>	1650–1620	Son
Mursilis I	1620–1590	Adopted son
Hantilis I	1590–1560	Brother-in-law
Zidantas I	1560–1550	Son-in-law
Ammunas	1550–1530	Son
Huzziyas I	1530–1525	Son (?)
Telipinus	1525–1500	Brother-in-law
Tahurwailis (?)	1500–1420	?
Alluwamnas		
Hantilis II		
Zidantas II		
Huzziyas II		
Muwatallis I (?)		

# The Taurus Mountains





## Table of Hittite Kings

<i>Name</i>	<i>Dates (B.C.)</i>	<i>Relationship to Last King</i>
Pitkhanas (of Kussara)		
Anittas (of Kussara)		Son

## OLD KINGDOM

Labarnas I	1680-1650	?
Labarnas II = Hattusilis I	1650-1620	Son
Mursilis I	1620-1590	Adopted son
Hantilis I	1590-1560	Brother-in-law
Zidantas I	1560-1550	Son-in-law
Ammunas	1550-1530	Son
Huzziyas I	1530-1525	Son (?)
Telipinus	1525-1500	Brother-in-law
Tahurwailis (?)	1500-1420	?
Alluwamnas		
Hantilis II		
Zidantas II		
Huzziyas II		
Muwatallis I (?)		